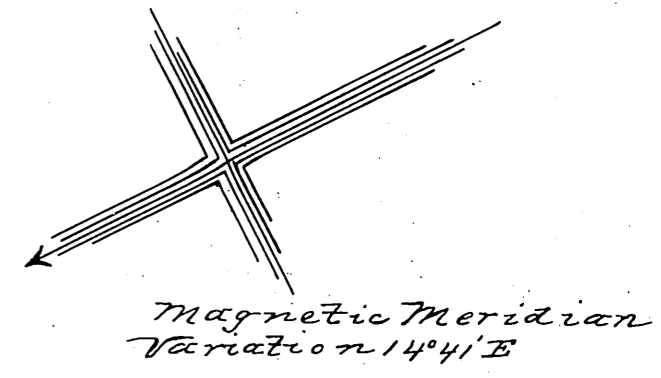
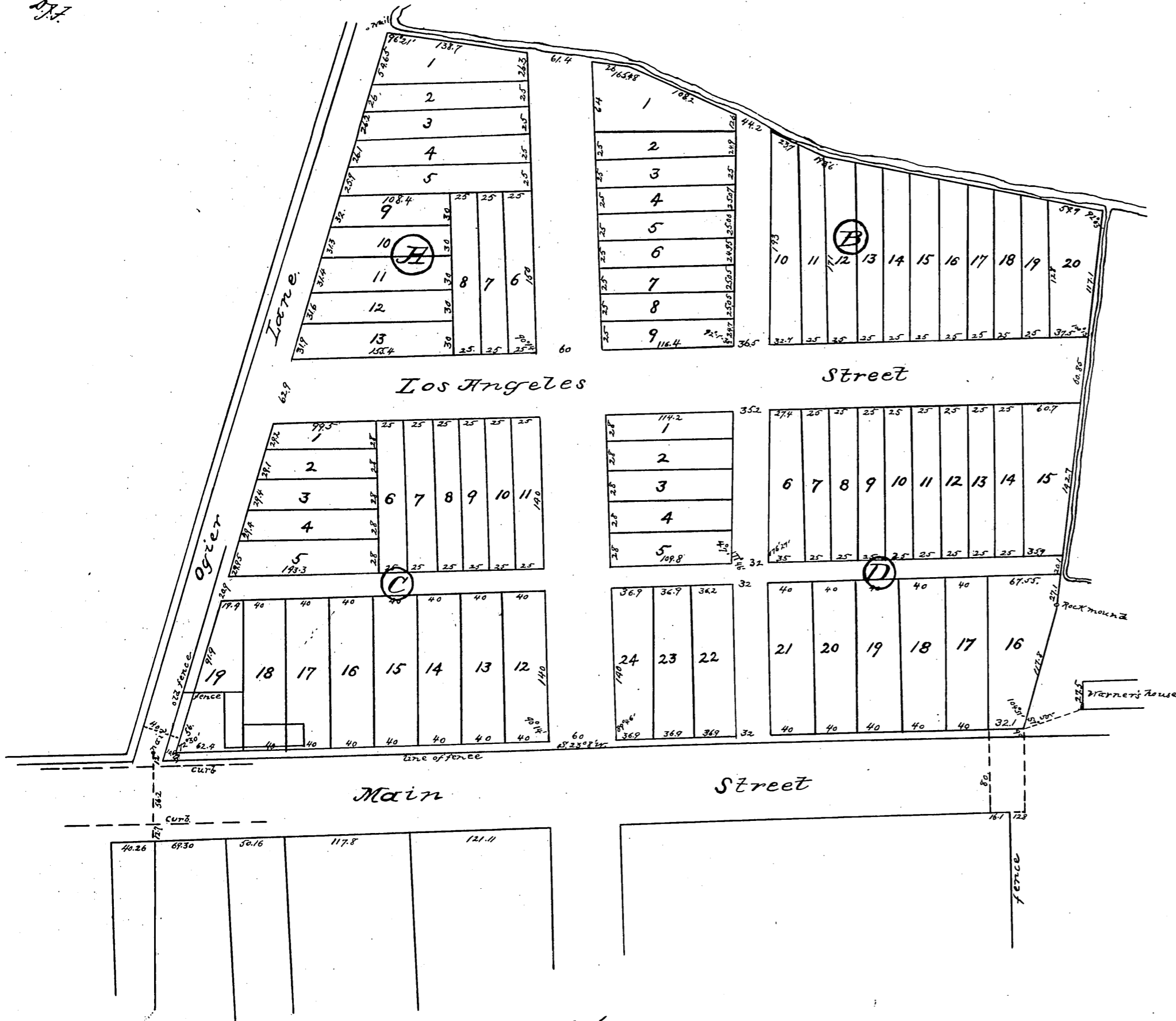
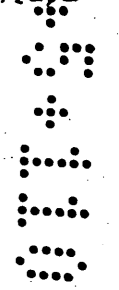


Comp'd.  
D.J.F.



MAP  
of the  
**RIVARA & VIGNOLO**  
TRACT  
Situated in the City of  
**LOS ANGELES**  
H.J. Stevenson, Suror  
1881.

Scale 40ft to one inch



Original reduced from scale of 40 to 100 feet per inch.  
Recorded at request of W.H. Hace March 3<sup>rd</sup> 1883.

Alley Winston to 5<sup>th</sup> D:11-205 D:3614-213