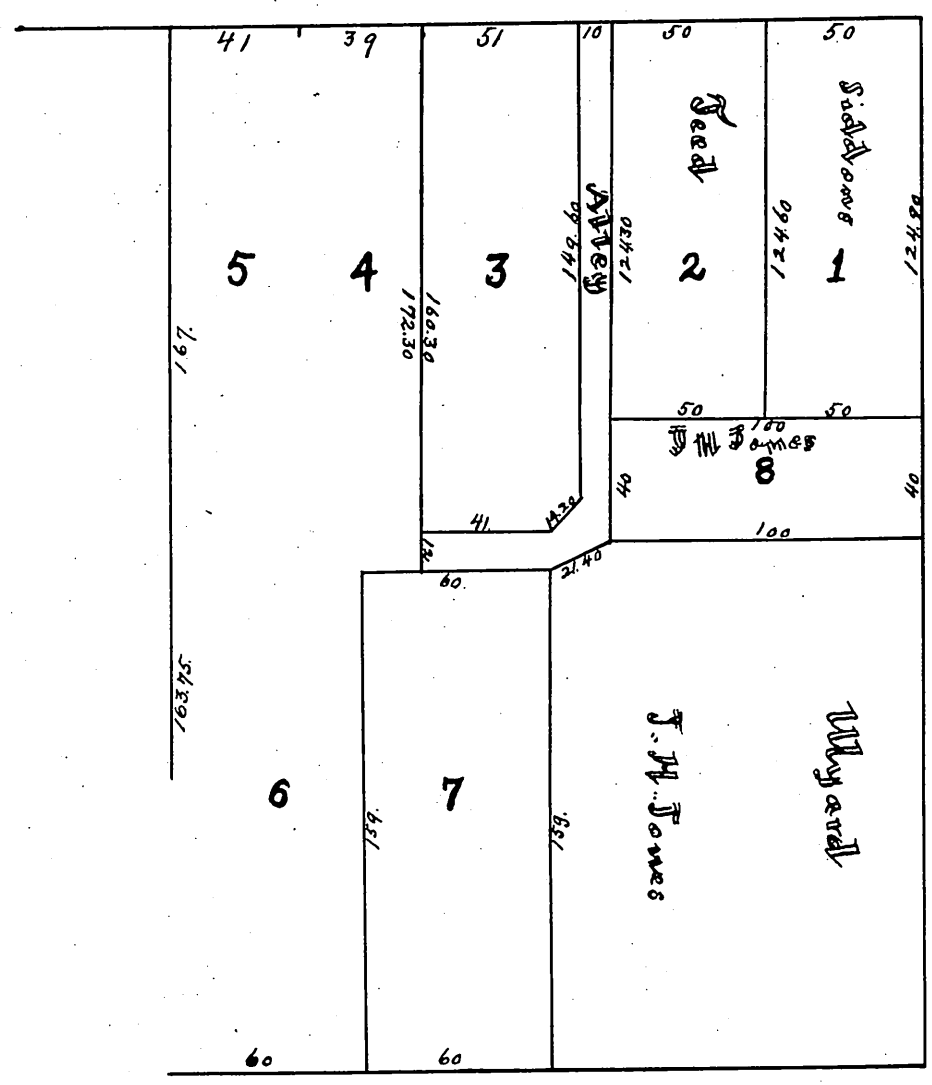


# MAP

of Subdivision of the North  
 part of Block 13. Ords Survey  
 Los Angeles City, Cal.,  
 made at the request of  
 M. L. Wicks.  
 March 1883 =  
 by E. T. Wright Surveyor  
 Scale 30 feet to an inch

Fort Street



Spring Street

Original reduced from scale of 30 to 60 feet per inch.  
 Recorded at request of J. A. Graves Mar. 24-1883.

Completed by J. T.