

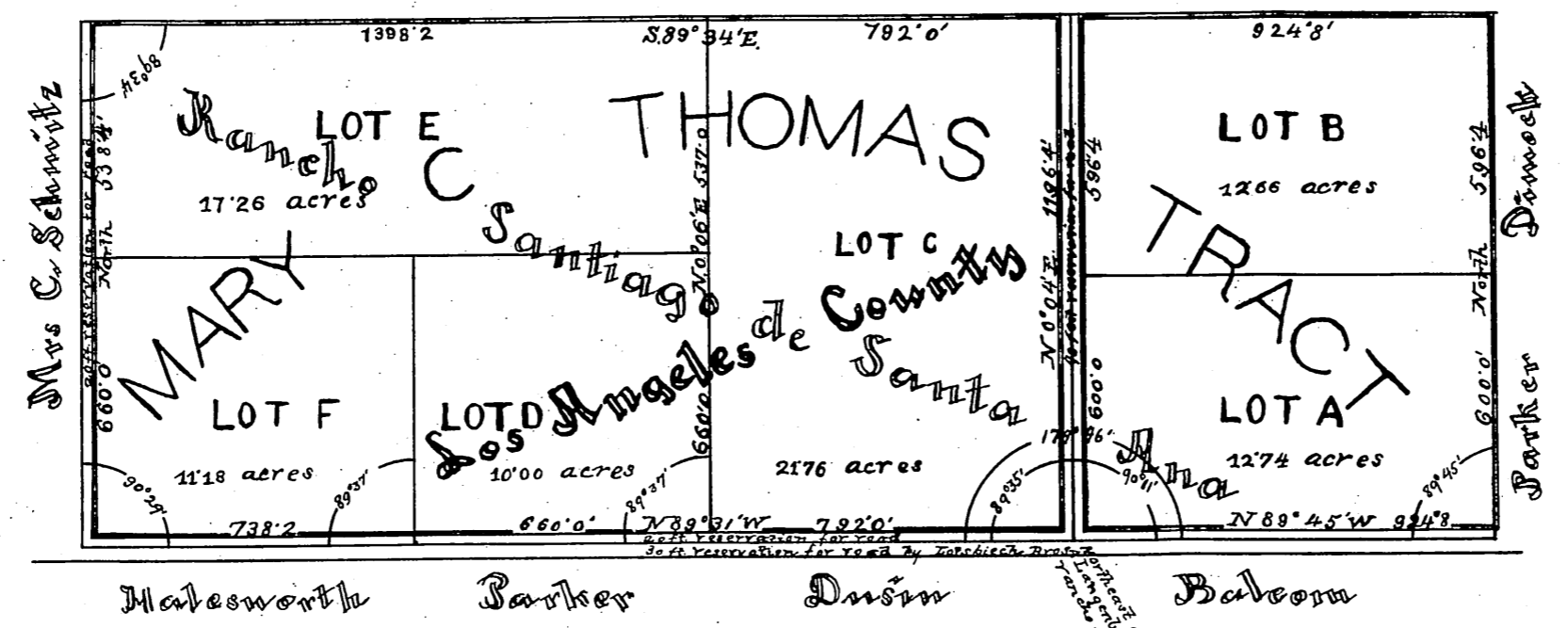
Confid
1877

—MAP—

S. D. Thomas

— OF THE —

S. D. Thomas



True courses — mag. var. : 14° 20' E.

Scale 200 feet to one inch

Subdivided April 7th 1883 by
George C Knox — Civil Engineer

Original reduced from scale of 200 to 400 feet per inch
Recorded at request of J. C Travis April 24, 1883

