

Conf'd.
557

Molt

Avenue

Subdivision
of

Block No 156 Pomona

Surveyed April 11th 1883 by
John E. Jackson County Surveyor

Scale 60 feet to one inch.

Recorded at request of A.R. Meserve
April 19 1883

Ellen St changed to Park Ave Ord 300 D: 6-180
Elizabeth St. changed to Main St. D: 30-42 Ord. 454

Street

Street

Street

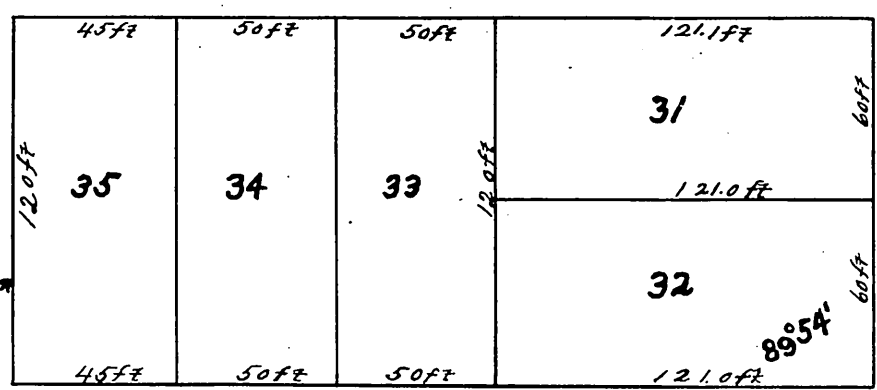
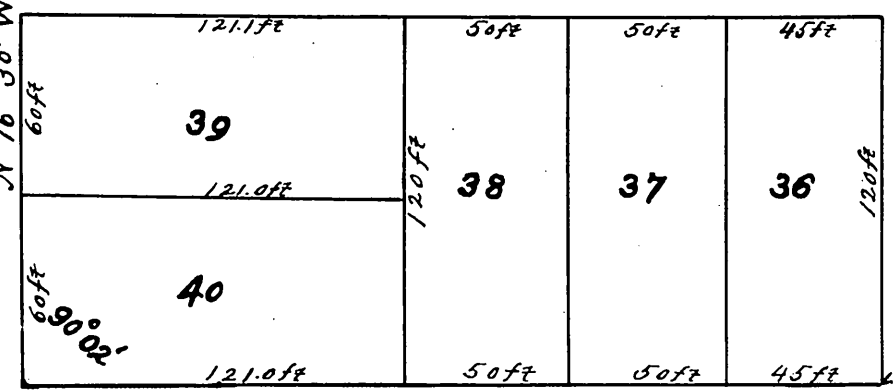
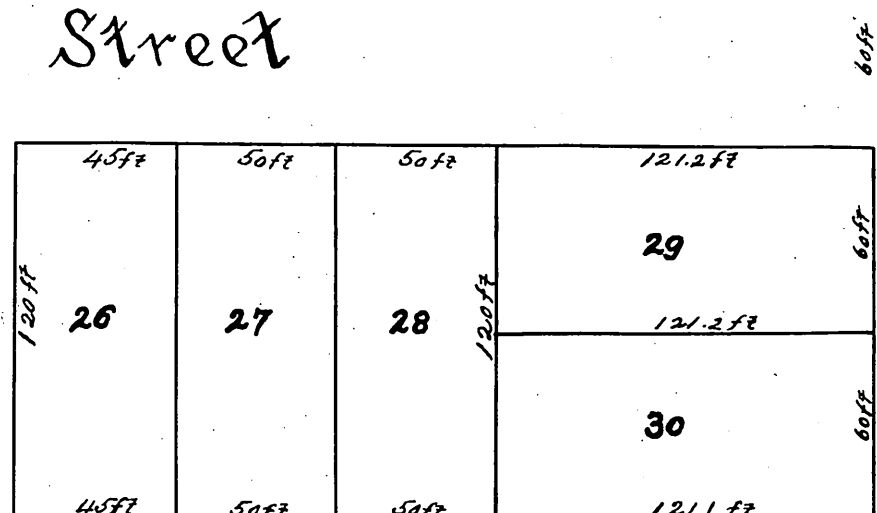
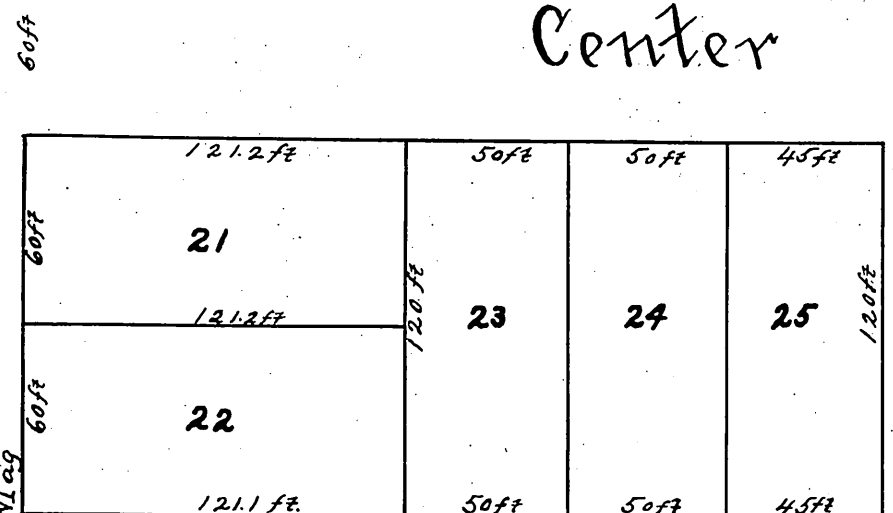
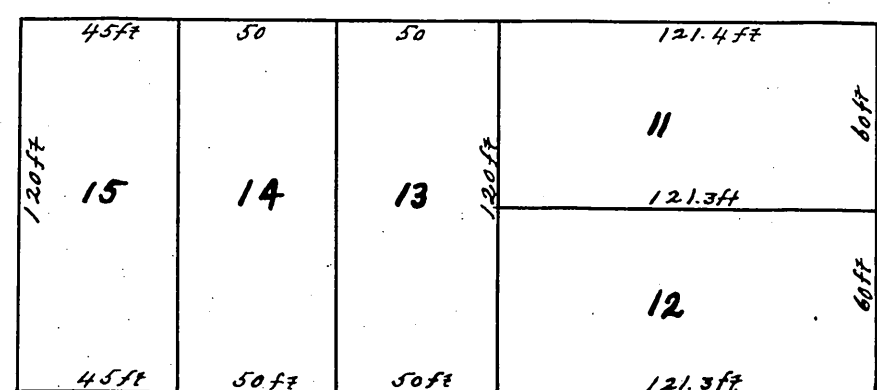
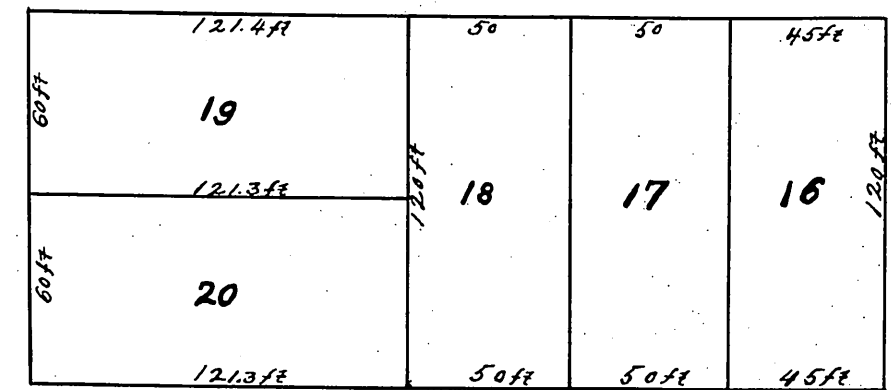
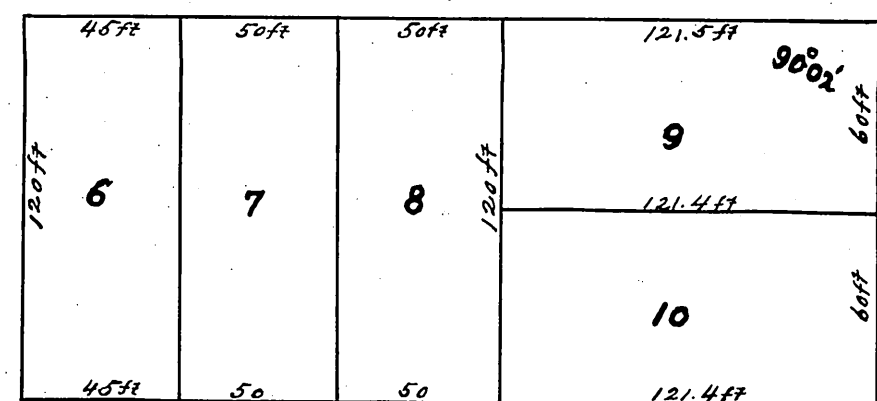
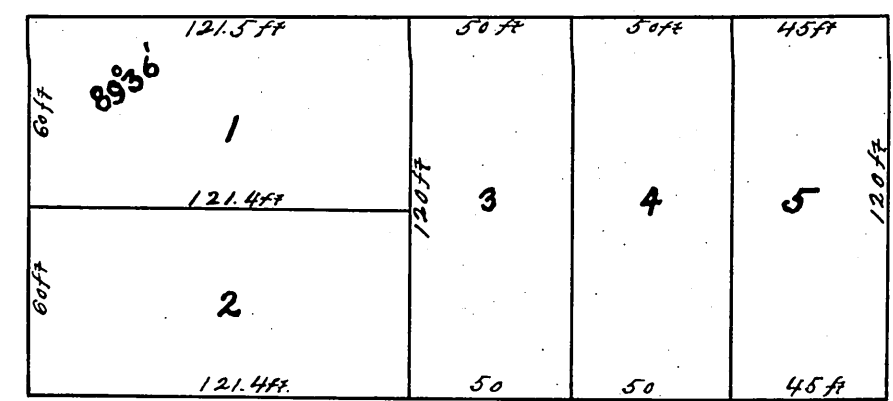
Center

Street

Ellen

Gordon

Elizabeth



N 16° 30' W Mag

25

