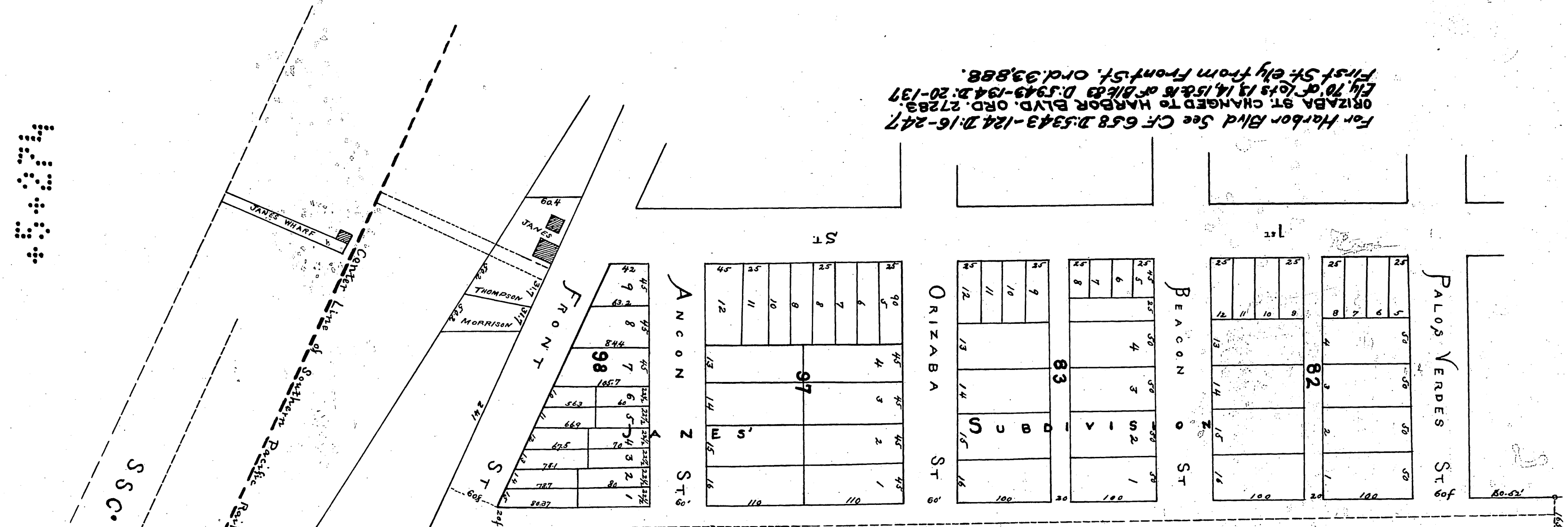


117

For Harbor Blvd See CF 658 D:5343-124 D:16-247  
ORIZABA ST CHANGED TO HARBOR BLVD. ORD. 27283.  
Ely 70 of lots 13, 14, 15 & 16 of B1683 D:5943-134 D:20-137  
First St: Ely from Front St. Ord. 33888.



JAMES' SUBDIVISION

P C S S C  
(E Goodall)

Map of part of the Town of

# SAN PEDRO

Scale 100 feet to 1 inch M.G. Stevenson Surveyor  
L.A. Jan 1883.

Recorded at request of  
J.F. James May 1, 1883.

66  
M1-5-117

2100  
p. Jones