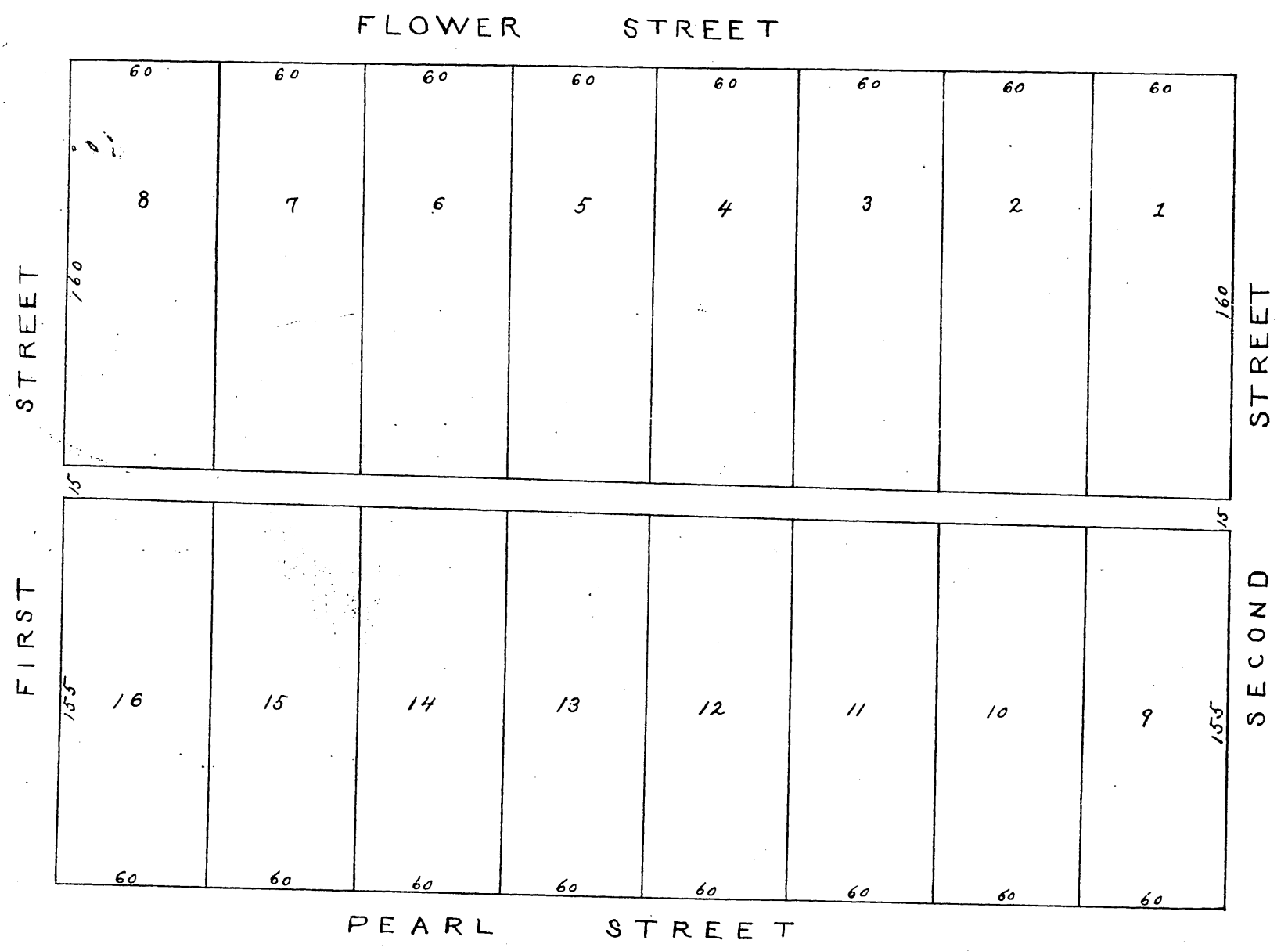
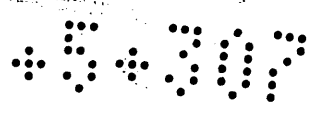


MR-5-307  
75

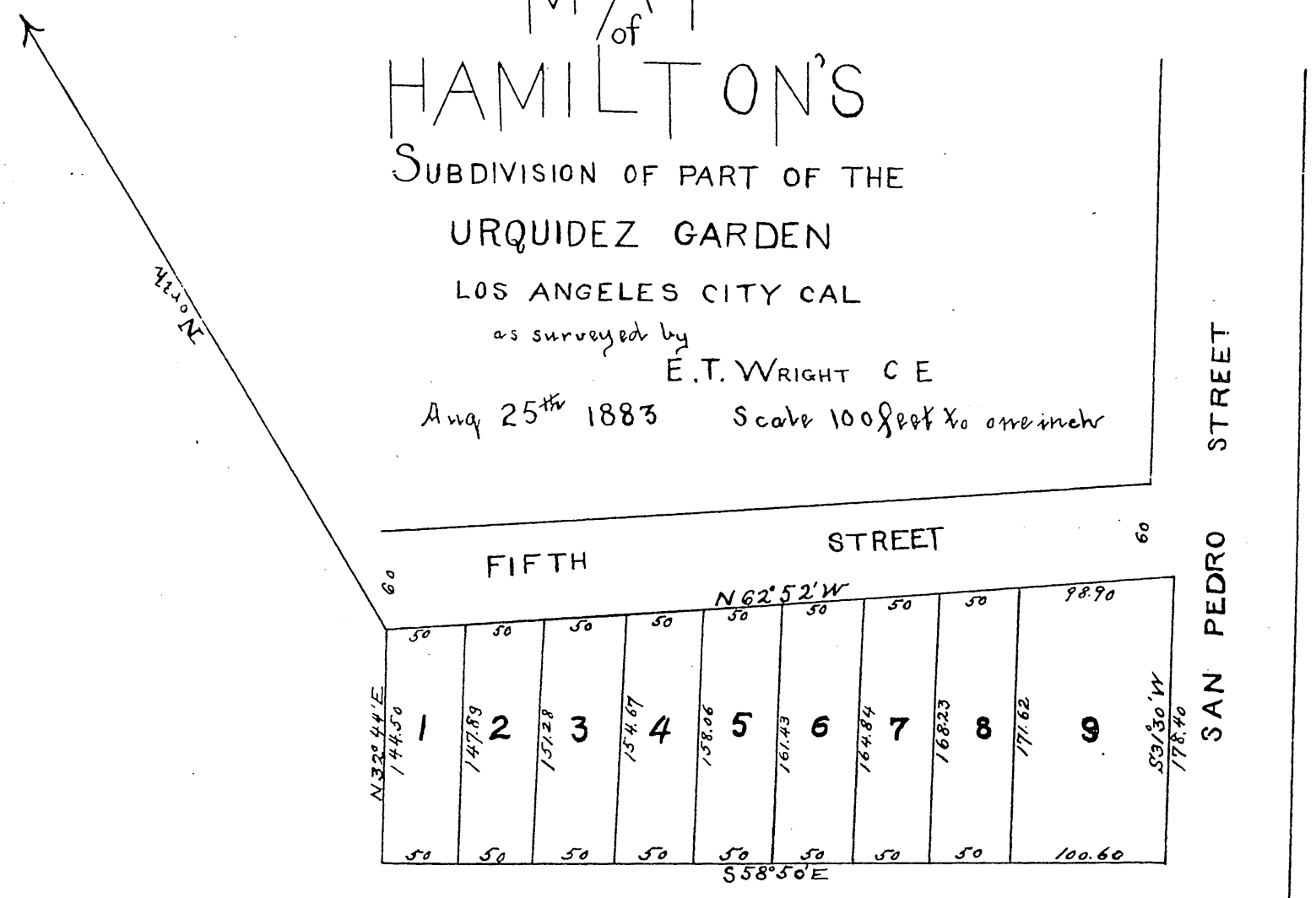


Map of Block W Mott Tract as subdivided by E. T. Wright at request of M. L. Wicks June 1883 in Los Angeles City. Scale 60' = 1 in.

Recorded at the request of M. L. Wicks. June 25 1883

# MAP of HAMILTON'S SUBDIVISION OF PART OF THE URQUIDEZ GARDEN

LOS ANGELES CITY CAL  
as surveyed by E. T. WRIGHT C E  
Aug 25<sup>th</sup> 1883 Scale 100 feet to one inch



Recorded at request of A. N. Hamilton Sept 12th 1883.

Completed 1883