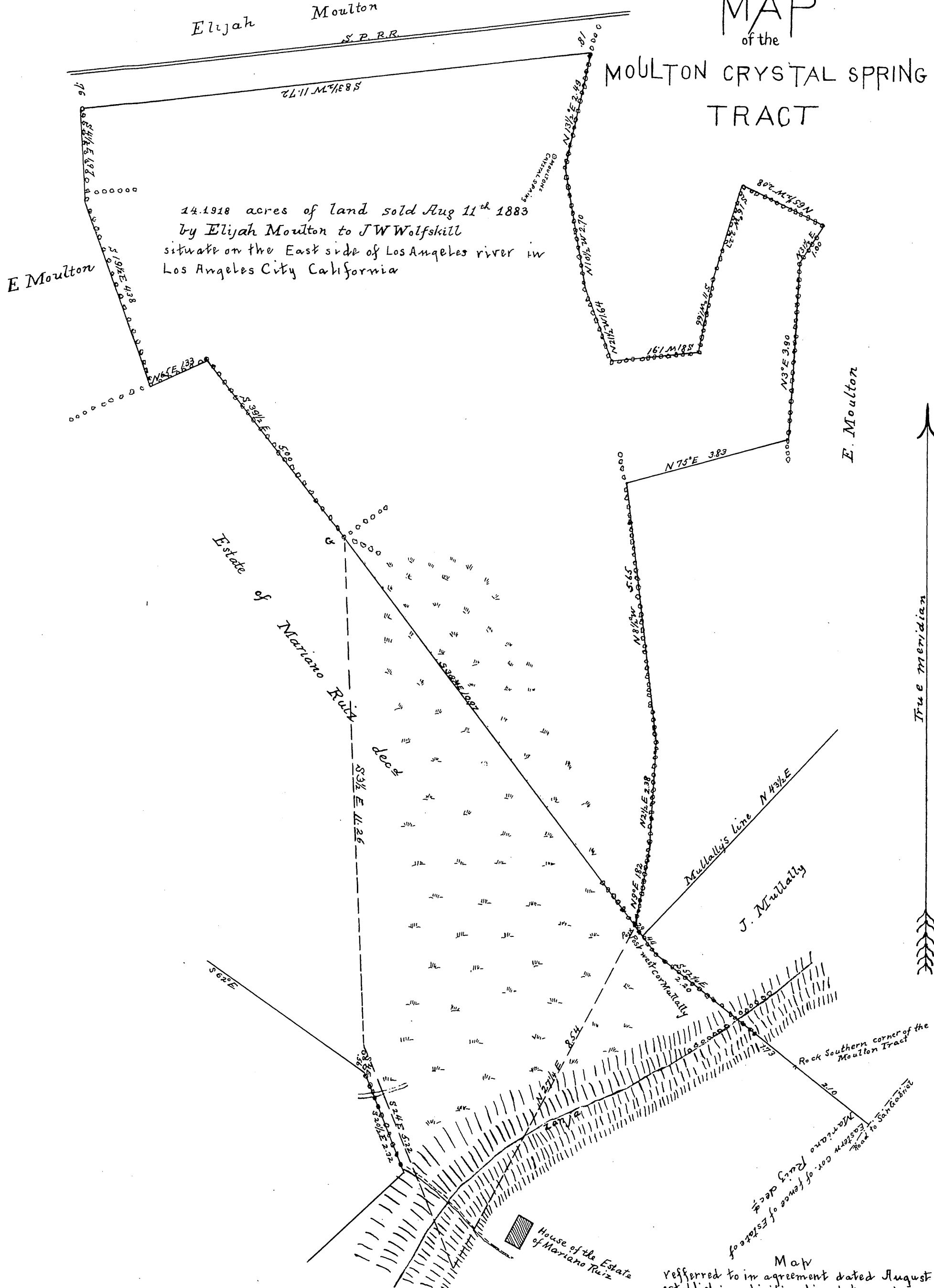




MR-S-319
78

MAP of the MOULTON CRYSTAL SPRING TRACT



14.1918 acres of land sold Aug 11th 1883
by Elijah Moulton to J.W. Wolfskill
situate on the East side of Los Angeles river in
Los Angeles City California

Recorded at request of
J.W. Wolfskill Aug 31 1883

Map
referred to in agreement dated August 31. 1883
establishing dividing line between lands of
Maria Ybarra de Ruiz and Joseph W. Wolfskill

Scale of one inch to 2 chains True Courses
Var 14.42' E Surveyed Aug 9 1883 at the
request of J.W. Wolfskill by Hansen & Sobano
F B 188-7-p

Comp'd
1883