

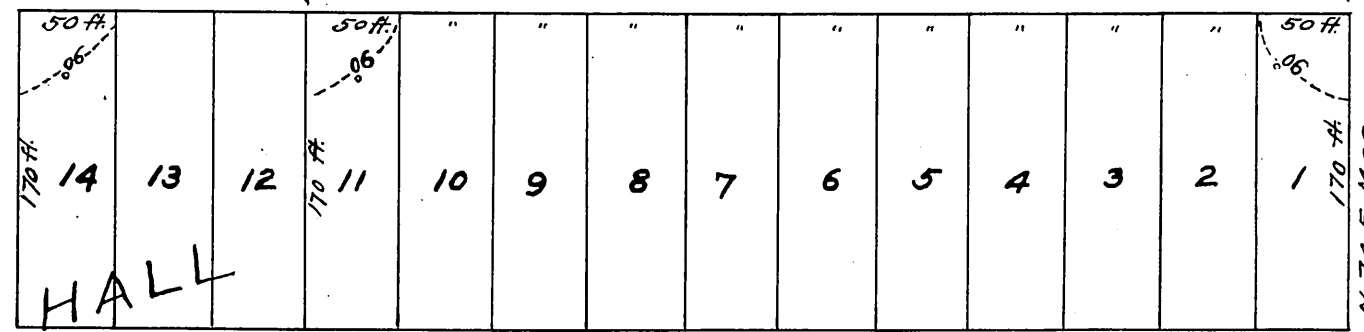
Cont'd. Plat.

SUBDIVISION  
OF PART OF

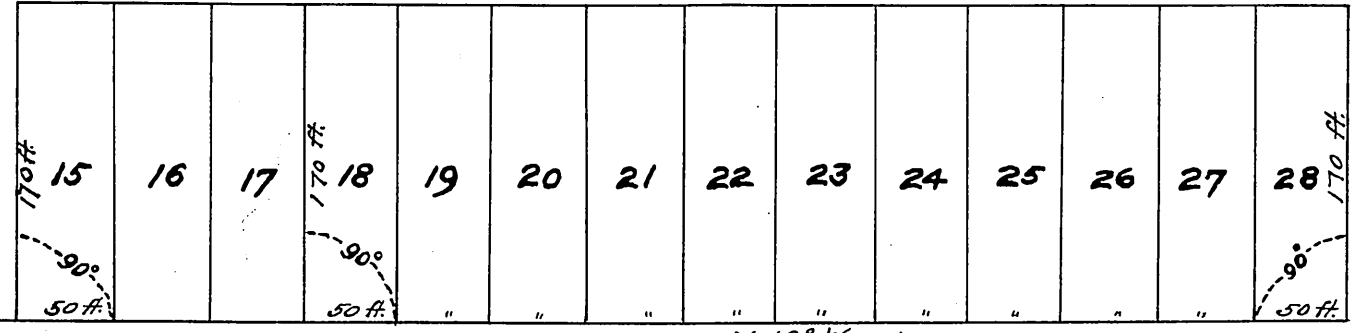
M<sup>RS</sup> HALL'S TRACT  
EAST LOS ANGELES  
CAL

SCALE 100 FT = 1 INCH

JOHNSON



ALLEY 21.3 FT. WIDE

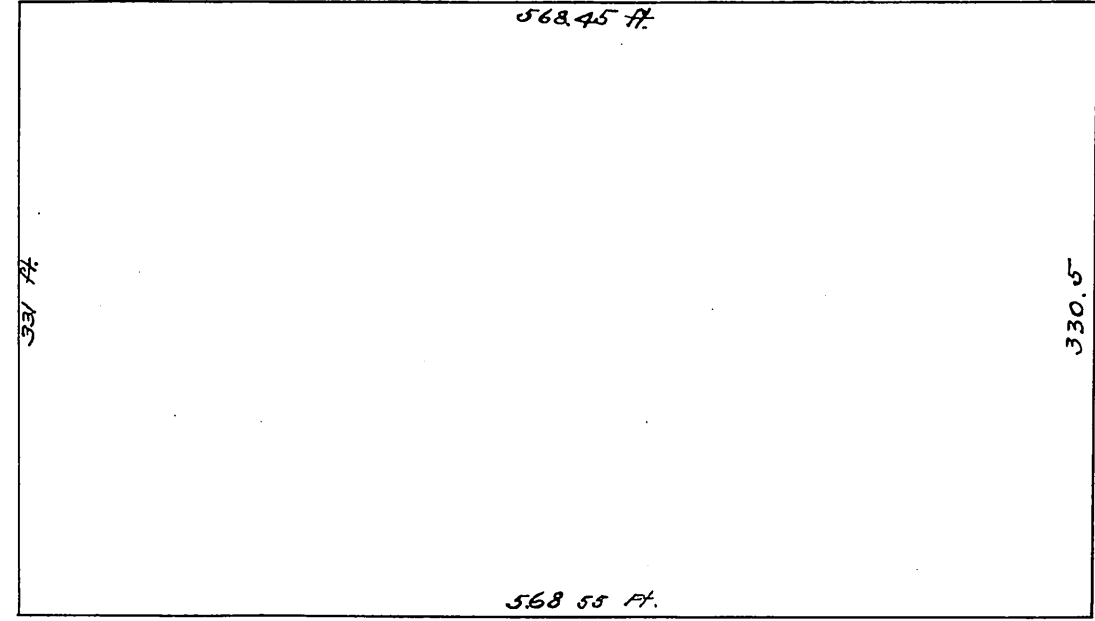


GRIFFIN

ST

60 ft

STREET.



100 ft

AVENUE

60 ft

PATRICK

DOWNEY

recorded Oct 12 1883 at the  
request of Mrs E. Hall.

Johnson St changed to Johnston St Ord 17945  
 For. lots 4 to 14 quitclaimed by L.A. City D:40-82 O.R. 3496-47  
 For. " " " " " " " " " " D:40-83 O.R. 3426-263  
 For. " " " " " " " " " " D:40-83 O.R. 3510-16  
 For. " " " " " " " " " " D:40-84 O.R. 4084-350