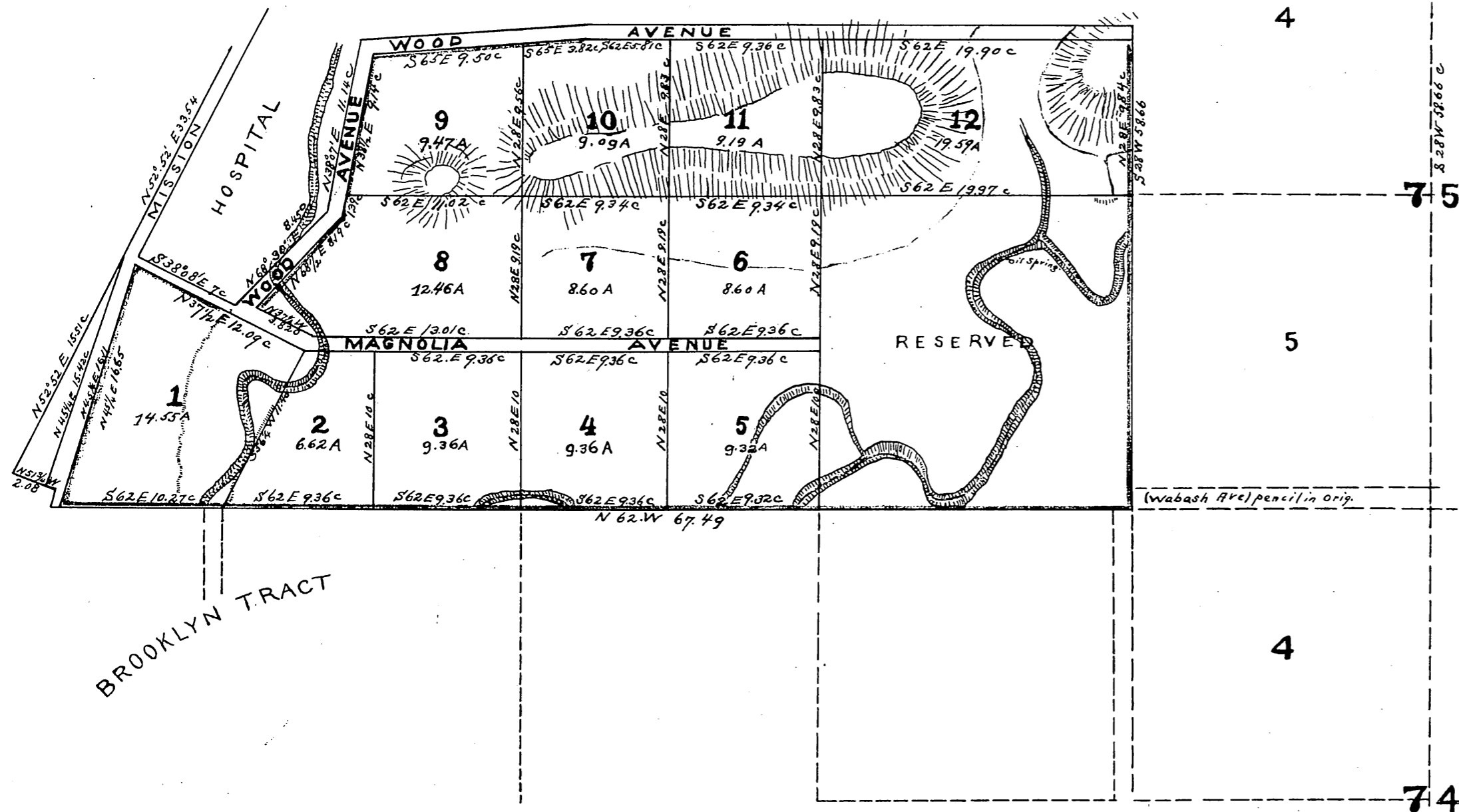




Comp'd  
D.F.



**MAP**  
OF  
**ORANGESLOPE**  
**TRACT**

CITY OF LOS ANGELES  
THE PROPERTY OF  
WILLIAM LACY and H. M. JOHNSTON.

SCALE 4 CH TO AN INCH

Original reduced from scale of 4 to 8 chains per inch.  
Recorded at request of Lacy & Johnston Sept 19 1883.

- Opening of State St. D:11-46 D:2770-116
- Opening of State St. in Blks. 3-8 and 9 D:3018-132-D:7-299
- Extension of Norfolk St See Ord 15215
- Opening of Griffin Ave " " 15216
- Widening of San Pablo St " " 15217
- Opening of Cornwell St " " 15218
- " " Farrar St " D:11-107D:3347-12
- Vac of State St between Wood Ave + Marengo St Ord 16405