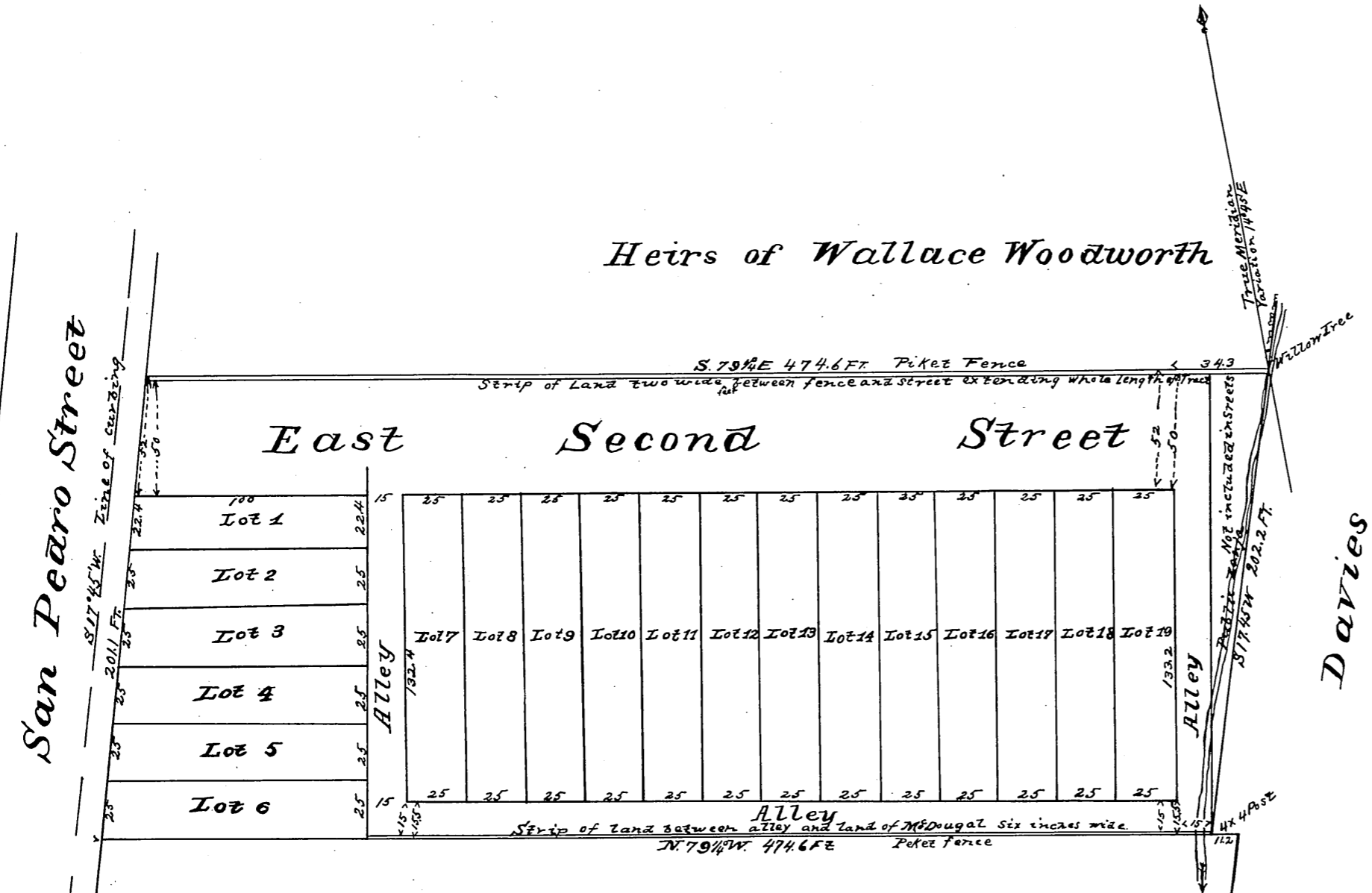


Confid.
D.F.



Map of ORANGE TRACT

owned by
A. C. Jeffries

according to the Survey by John E Jackson.

Note

Distances are given in feet and decimals of a foot. Stakes have been set at the corners of each lot. A strip of land two feet wide has been left between the land of the Heirs of Wallace Woodworth and the fifty foot street.

A strip of land six inches wide along the alley between it, and land of Mrs McDougal has been left uninclosed in alley.

Surveyed August 8th 1883

Scale 30 Feet to one inch

John E. Jackson
County Surveyor

Original reduced from scale of 30 to 60 feet per inch.

Recorded at request of A. C. Jeffries October 17, 1883.

W 15' Lot 14 D: 5724-84 D: 20-79

