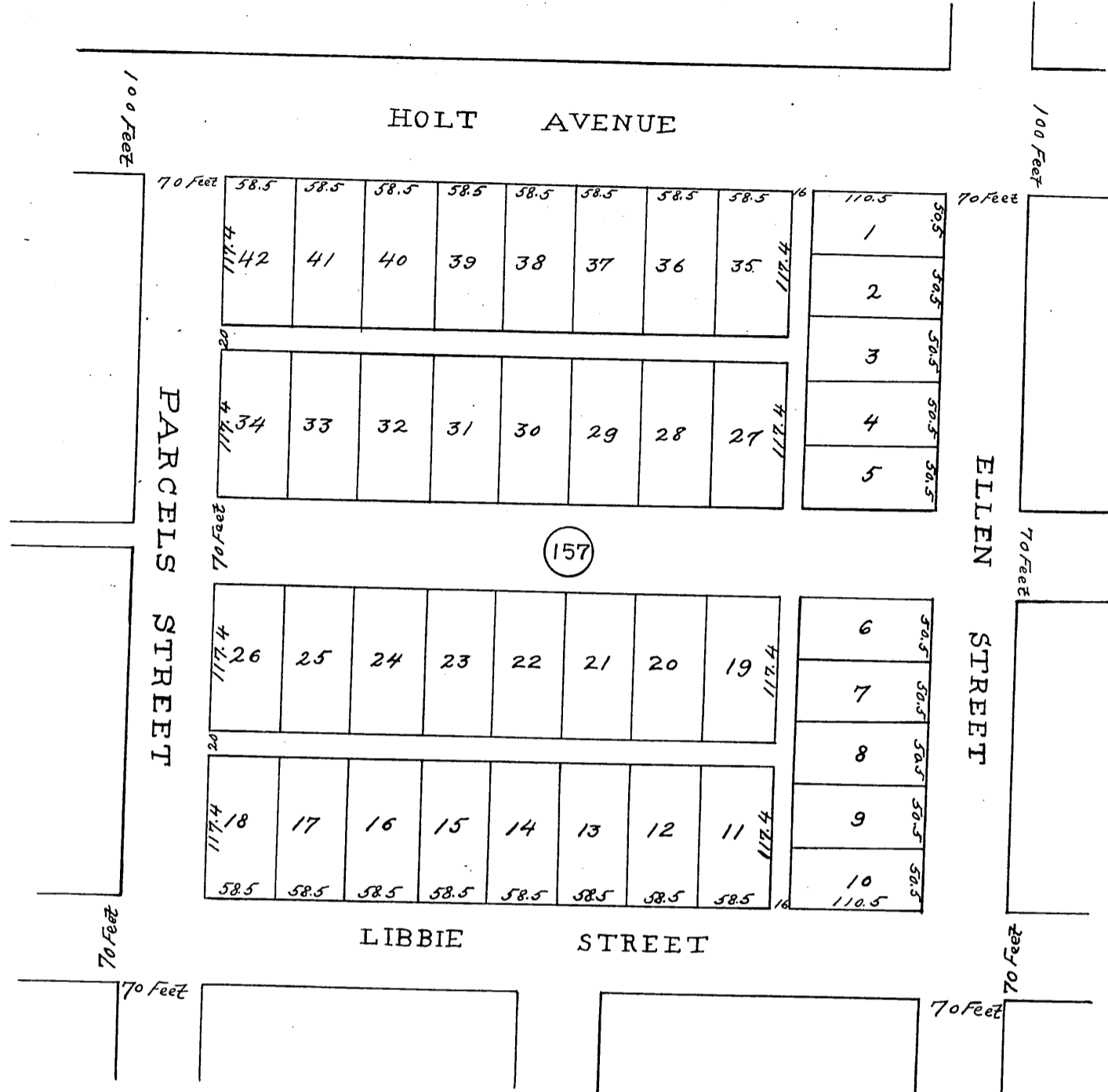




MR-5-350
91



MAP

OF

S. E. HALL'S
Subdivision of Block 157

POMONA TRACT
Surveyed July 1883 by F. J. Taylor
Scale 60 Feet to 1 inch
Surveyor.

Recorded at request of S. E. Hall. Oct. 31.
Original reduced from scale of 60 to 120 feet per inch

Ellen St changed to Park Ave Ord 300 D: 5-180
Libbie St changed to Monterey Ave Ord 319 D: 6-182

Comp

5R