



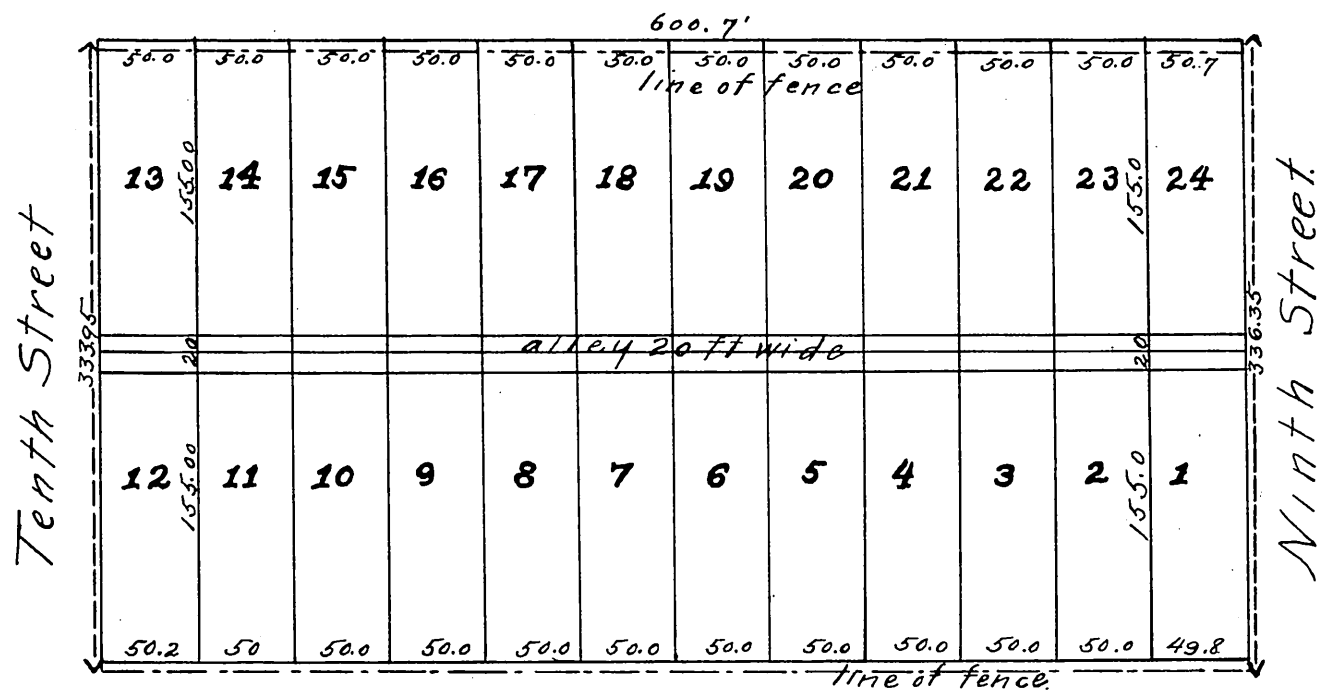
Plat of

Block 61

Ord's survey Los Angeles Cal
and its subdivisions
made at request of
Mrs Eliza Wilson

Oct 1883

Olive Street



Widening of 9th St D:7-235
" " Hill St See D:11-13.
ALLEY CHANGED TO MIDWAY PLACE. ORD. 28868

Original reduced from scale of
50 to 100 feet per inch.

Recorded at request of
Mrs. Eliza Wilson
Nov 12 1883.

Scale 500 ft to one inch

MR-5-356
97

Eliza Wilson