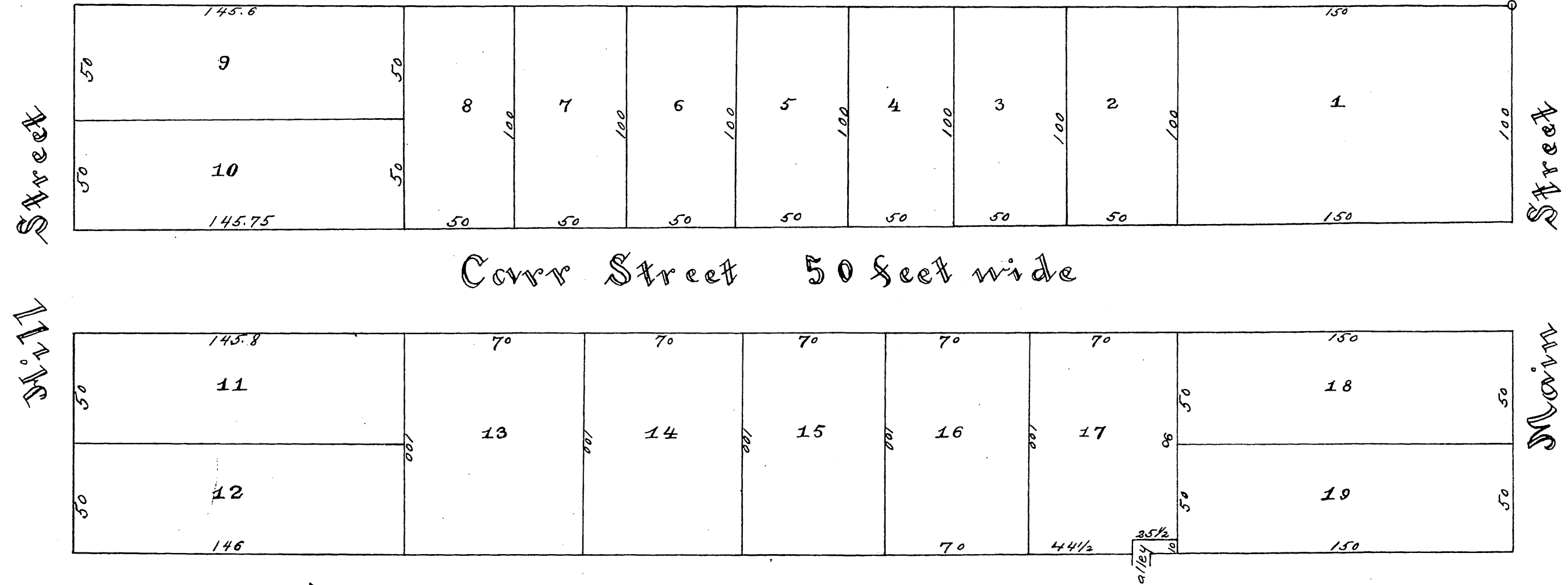


Compd.  
1883

North

225 ft to Pico St.



Carr Street 50 feet wide

Map of the Subdivision of the Center part  
 of the Carr Tract made at request of  
 M. L. Wicks August 1883 in Los Angeles City  
 South

Recorded at request of M. L. Wicks Aug 25 1883

Hill St widening D:16-98  
 C.F. 514  
 Main St widening See C.F. 521.

5 R.

