

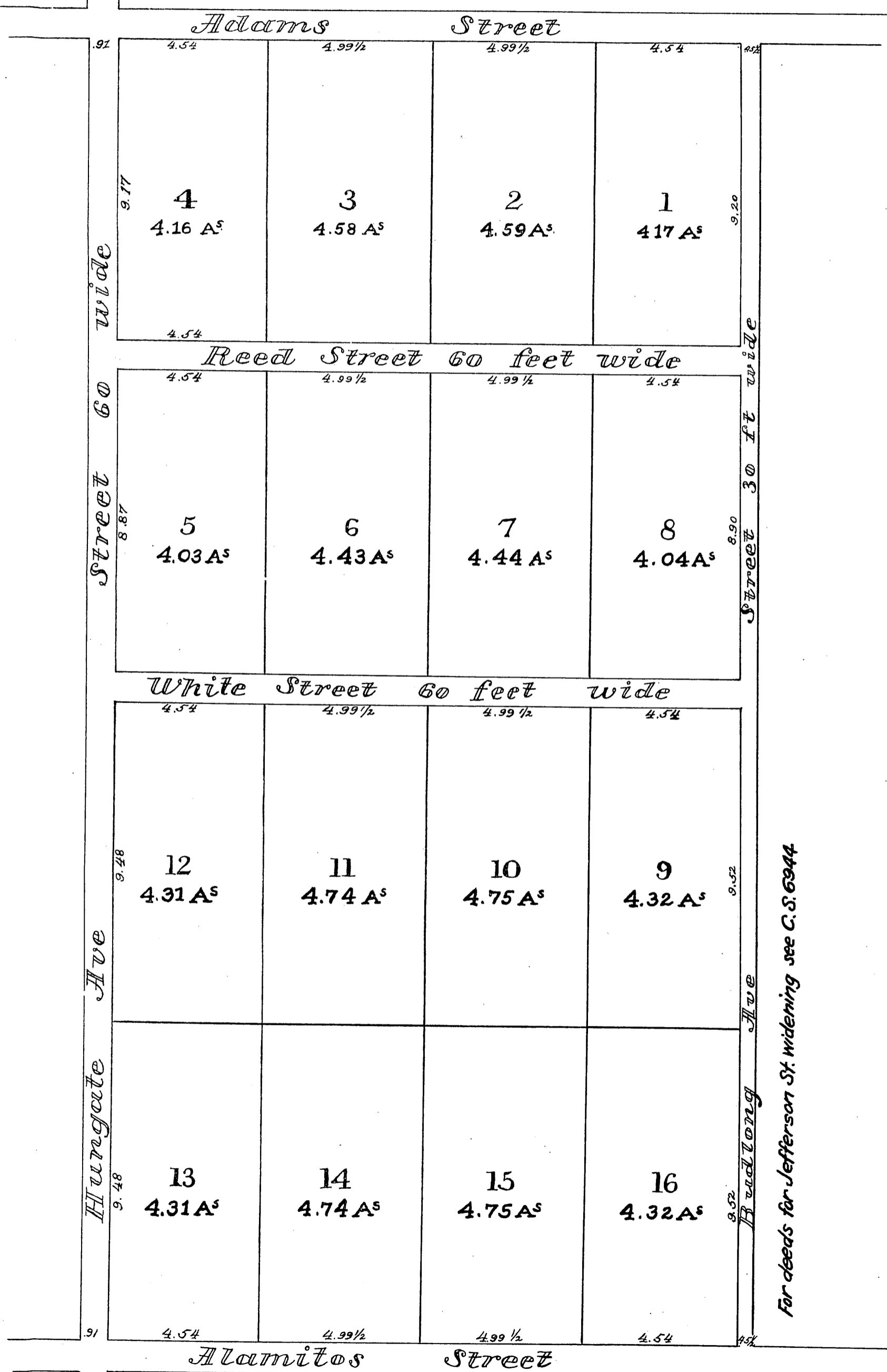
MR-5-359
100



MAP

of Reeds Subdivision of the
W. 1/2 of the N.E. 1/4 of Sec. 1 T. 2. S. R. 14 W. S.B.M.
Los Angeles Cal. Surveyed December 8th 1882
by E. T. Wright Co. Sur

Scale 3 chains to one inch



For deeds for Jefferson St widening see C.S. 6944

Recorded Nov 24 1883 at request of J.E. Reed.

Compld
1883

75

76