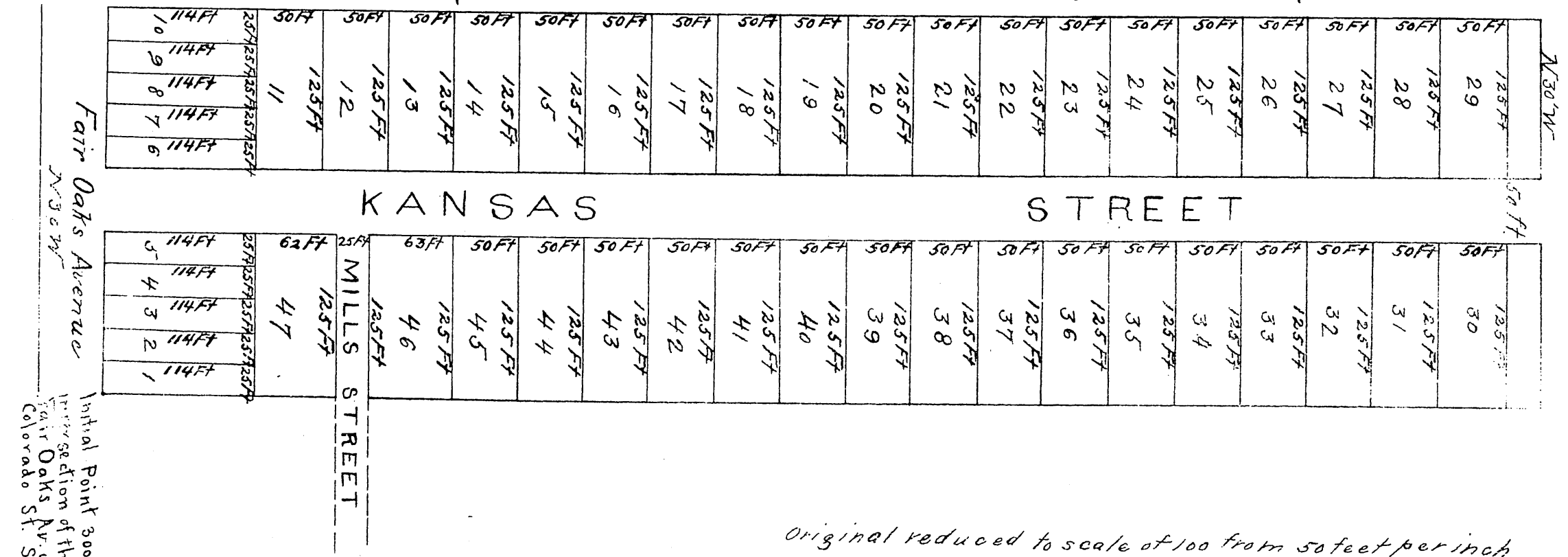
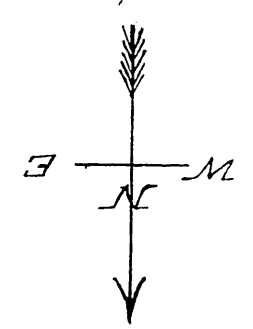


Plat of the Subdivision of MULLINS' TRACT Pasadena, Cal.

Being the South half of Lot 6 in Berry & Elliott's Subdivision
in the subdivided lands of the San Gabriel Orange Grove Association
in the Rancho San Pasqual Los Angeles Co. Cal.



Initial Point 300ft S from the
irrigation of the W line of
Fair Oaks Av. with S line of
Colorado St. Scale 50 Ft to 1 in.

Original reduced to scale of 100 from 50 feet per inch

Recorded at request of Mr. Mullins Nov 24. 1887

MR-5-360
101