

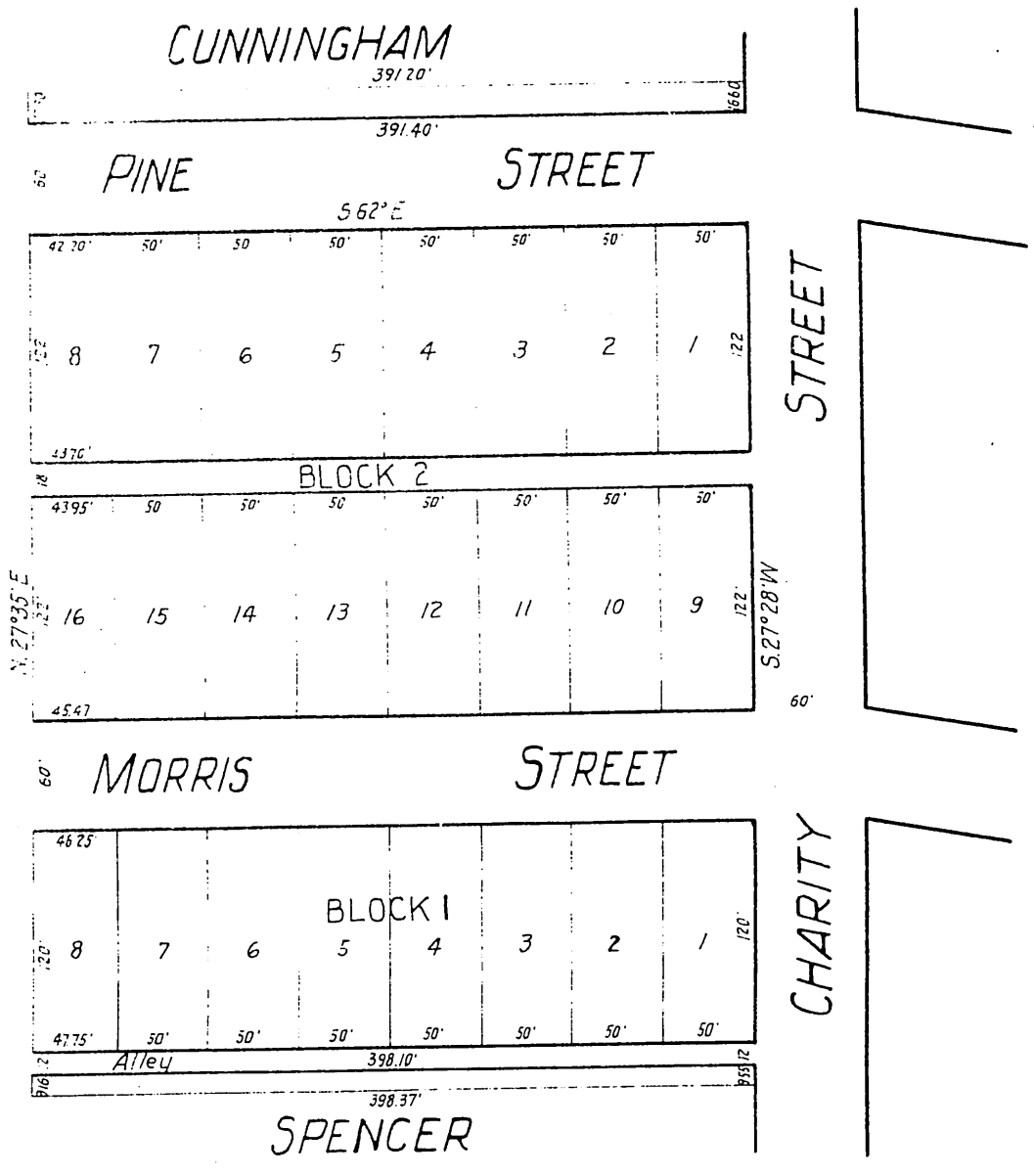


MR 5-361
1

MAP OF
NILES ADDITION
TO THE
MORRIS VINEYARD TRACT

Los Angeles City Cal.
as Surveyed in October 1883
by E.T Wright

Scale 50 feet to an inch.



Original reduced from scale of 50 to 100 feet per inch.
Recorded at request of J.P.M^cNamer Oct. 25, 1883

copy