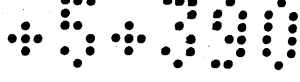


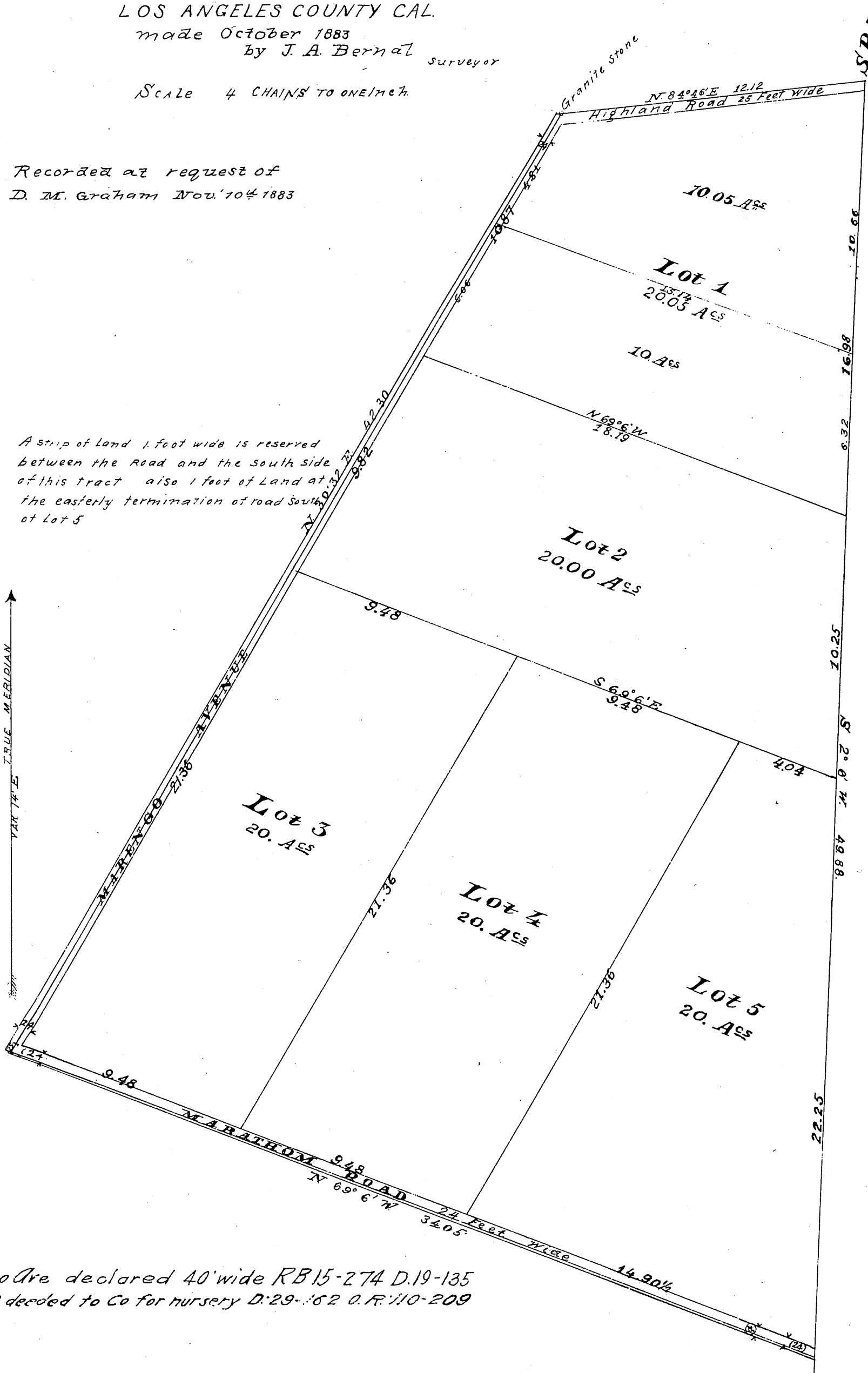
MR 5-390



**MAP**  
 of  
**MOHR' LOWELL' GRAHAMS**  
*Subdivision*  
 of a part of the  
*Rancho San Pascual*  
 LOS ANGELES COUNTY CAL.  
 made October 1883  
 by J. A. Bernal surveyor  
 Scale 4 CHAINS TO ONE INCH

Recorded at request of  
 D. M. Graham Nov. 70<sup>th</sup> 1883

A strip of land 1 foot wide is reserved  
 between the Road and the south side  
 of this tract also 1 foot of land at  
 the easterly termination of road South  
 of Lot 5



Marengo Ave declared 40 wide RB 15-274 D. 19-135  
 Por. Lot 2 decided to Co for nursery D. 29-162 O.R. 110-209

*Compd*  
*1883*

S.R.