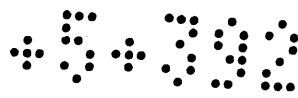


MR 5-392



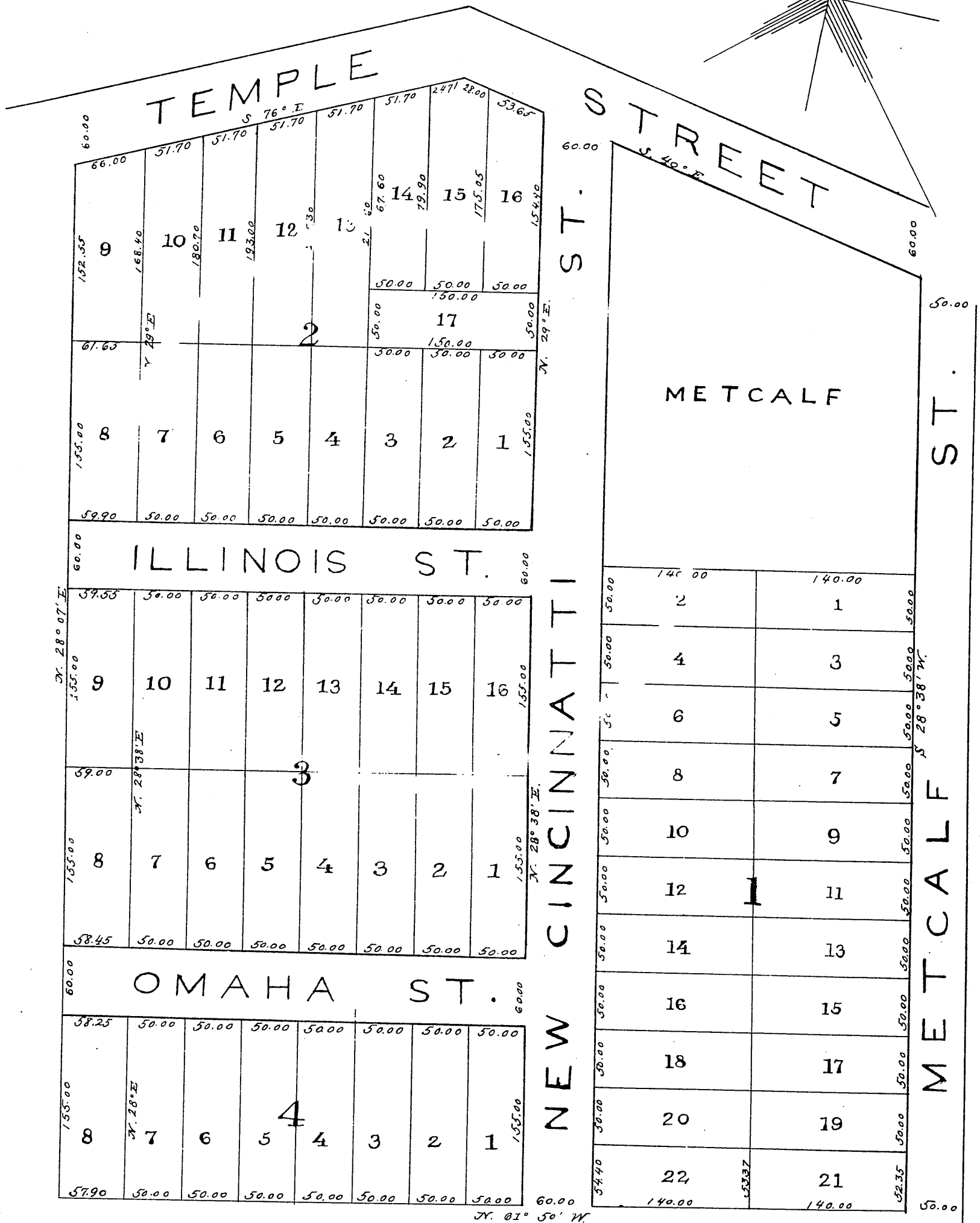
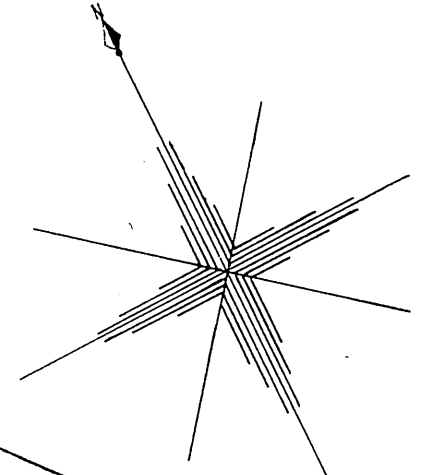
# MAP OF THE OCEAN VIEW TRACT N<sup>o</sup> 1 LOS ANGELES, CAL.

SURVEYED IN DEC 1883

BY

E. T. WRIGHT.

SCALE 100 FT. PER INCH TRUE COURSES.



*Metcalf St. changed to Bixel St. Ord. 37780  
 Por of lot 9 and all of lot 10 for school purp. D: 37-7 O.R. 2140-178 & O.R. 2140-179  
 Lot 7 Bk 2 for School purp. D: 45-3 O.R. 5229-302  
 Lot 6 " 2 " " D: 45-65 O.R. 5194-64*

Recorded at request of V. Beaudry December 29, 1883.

Omaha St changed to Edgeware Place Ord 19052

*copy of 1883*