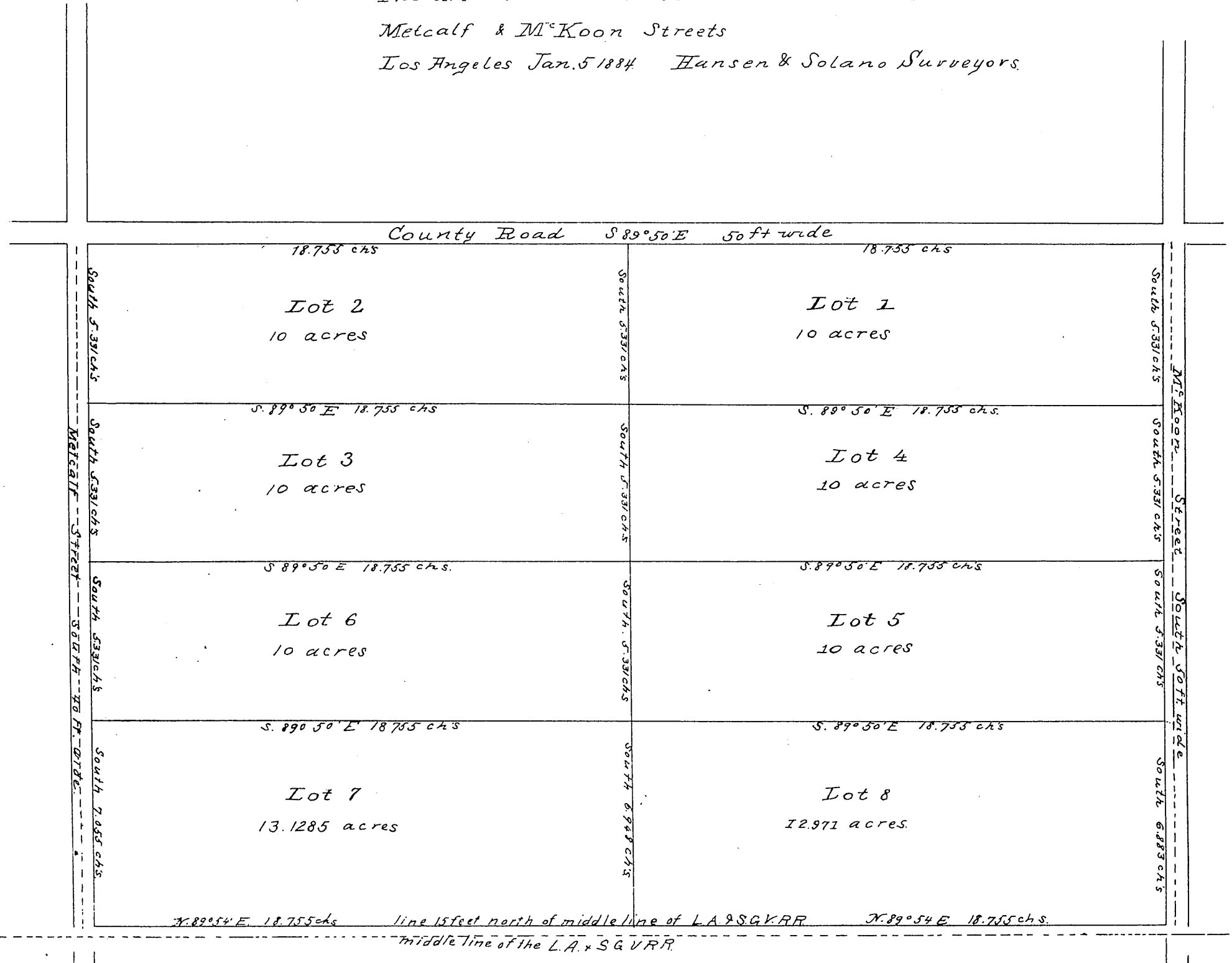


MR 5-404

Map of Linden Place Pasadena

in the County of Los Angeles Cal.
 being a part of the Ro. San Pascual.
 and being the same 87.20 acre tract,
 conveyed by Henry H Vissoher to Thomas
 E Metcalf by deed of date Oct 11, 1883
 rec in. B 113 of deeds p 55 in the
 Records office of Los Angeles Co.
 Scale of 2 ch's per inch. True courses Var. $14^{\circ}36'E$
 Surveyed at request of Messrs. T E Metcalf &
 M.G. McKoon Jan. 3rd 1884, by Hansen & Solano.
 The area of the Lots extends to the middle of
 Metcalf & McKoon Streets
 Los Angeles Jan. 5 1884 Hansen & Solano Surveyors.



Recorded 12 Jan. 1884
 at request of T E Metcalf.

Handwritten initials

5
P