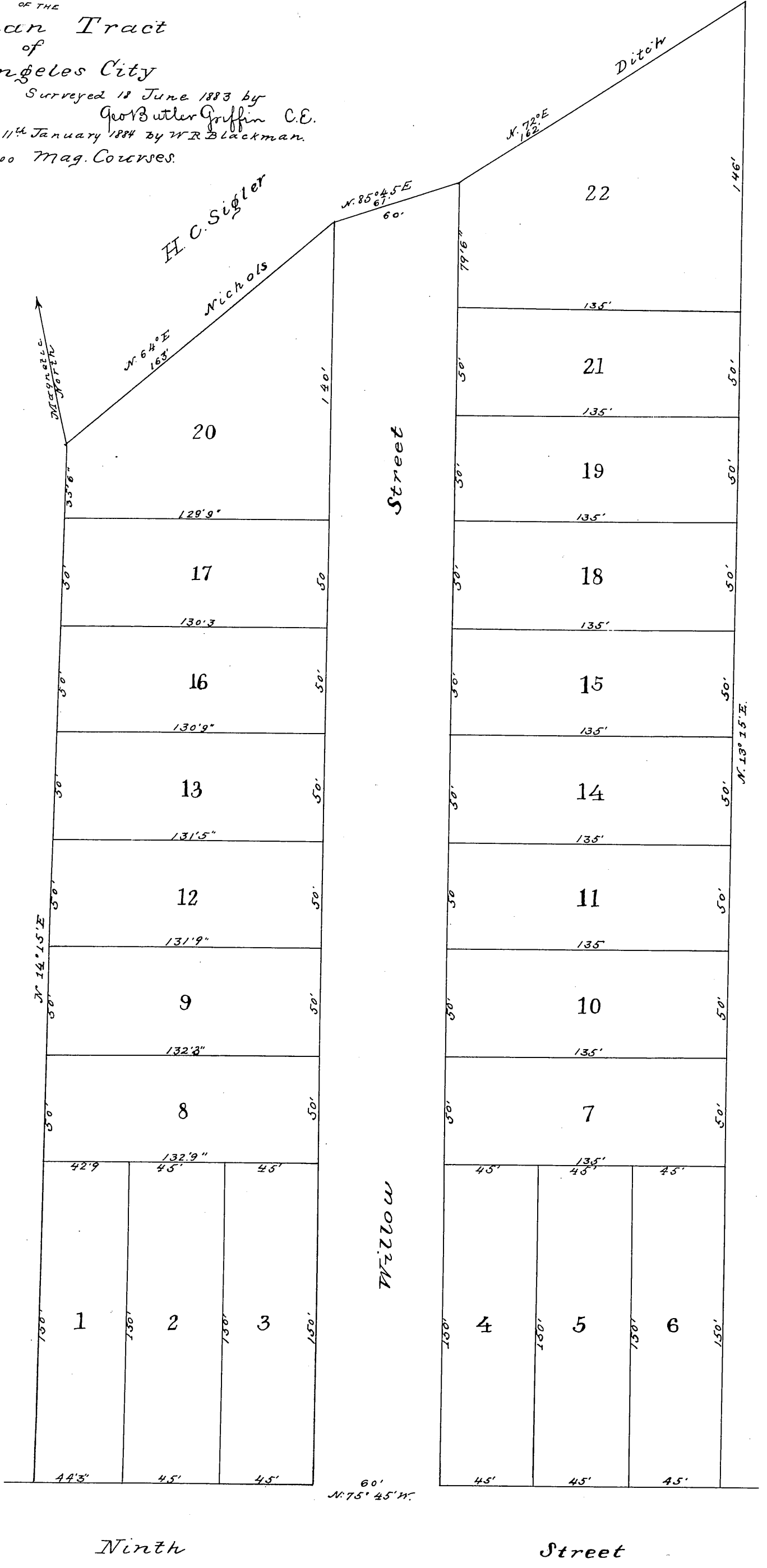


MR 5-405

Plan  
OF THE  
Truman Tract  
of  
Los Angeles City

Surveyed 18 June 1883 by  
Geo Butler Griffin C.E.  
Re-arranged 11<sup>th</sup> January 1884 by W.R. Blackman.  
Scale 1/600 Mag. Courses.



comp'd  
1884

Recorded 12 January 1884  
at request of E. Bouton.