

# 115 46 ACRES OF LAND OF THE GLASSELL<sup>CO</sup> CHAPMAN TRACT

## Rancho Santiago de Santa Ana

Surveyed February 1882

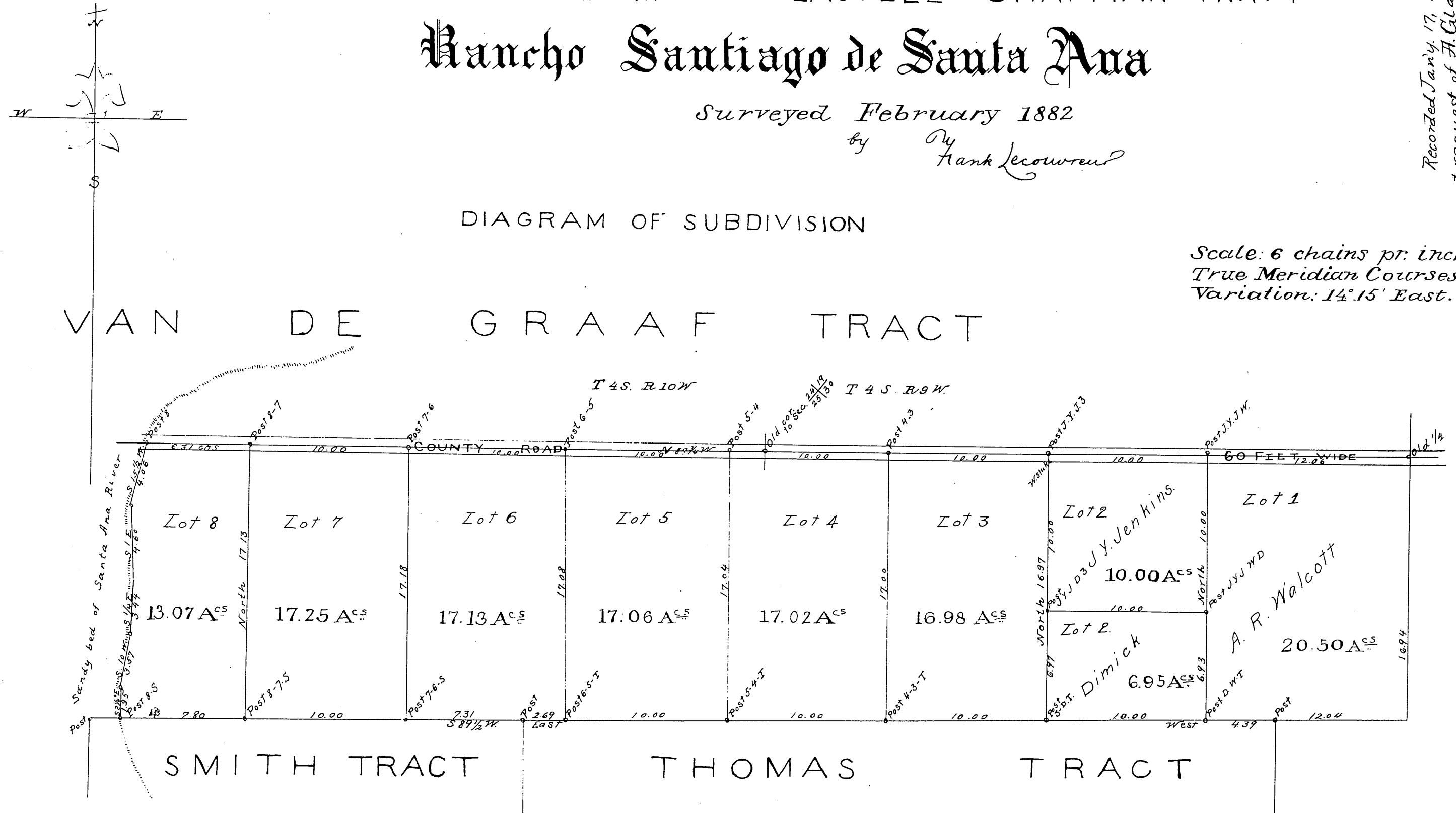
by *Hank Lecowren*

Recorded Jan'y. 17, 1884  
at request of *F. Glassell.*

DIAGRAM OF SUBDIVISION

Scale: 6 chains pr. inch.  
True Meridian Courses.  
Variation: 14° 15' East.

### VAN DE GRAAF TRACT



MR 5-408

*[Handwritten signature]*