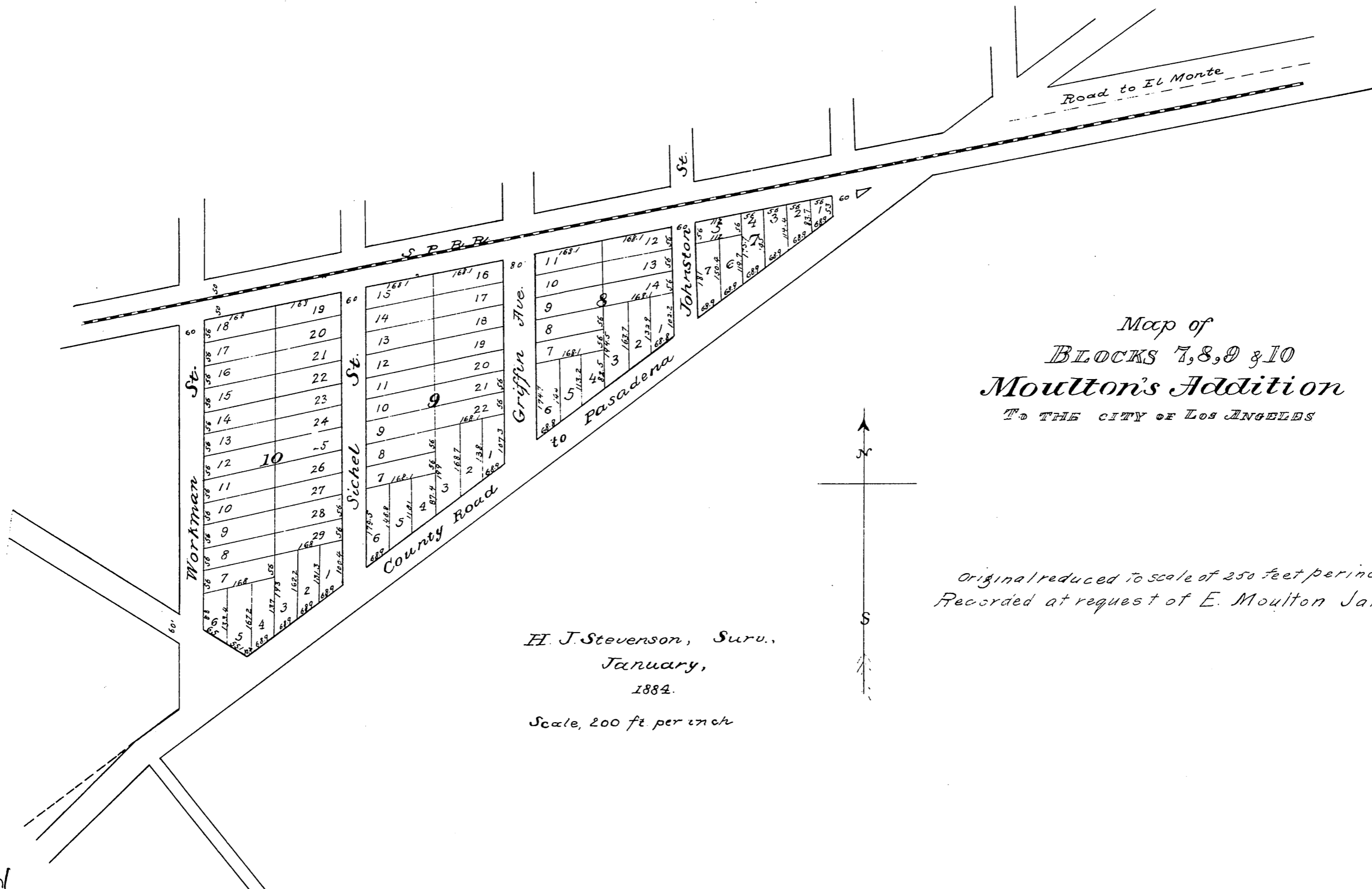


Comp'd
Dy. F.



Map of
 BLOCKS 7, 8, 9 & 10
 Moulton's Addition
 TO THE CITY OF LOS ANGELES



Original reduced to scale of 250 feet per inch
 Recorded at request of E. Moulton Jan'y. 18 1884.

H. J. Stevenson, Surv.,
 January,
 1884.

Scale, 200 ft per inch

MR 5-427