

— **PLAT** —  
OF THE  
— WORKMAN AND HOLLENBECK TRACT —

— CITY OF LOS ANGELES —

— SUBDIVIDED AT THE REQUEST OF —

— WM H WORKMAN —

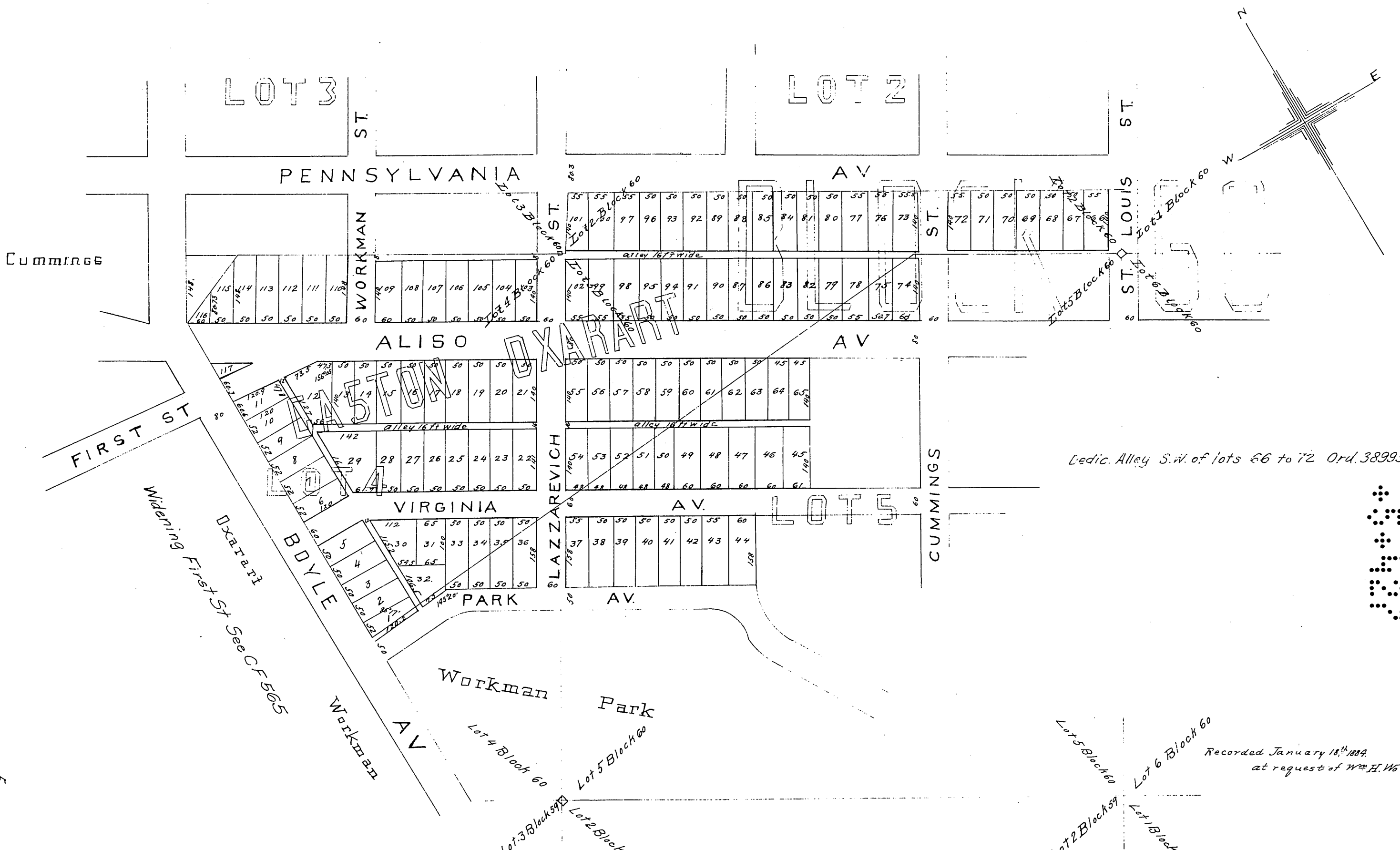
— IN DECEMBER 1883 BY —

— Geo. G. Knox C.E. —

*Scale 200 feet to one inch.*

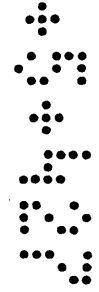
The Workman and Hollenbeck Tract comprises 1<sup>st</sup> Part of Lots 2, 4, and 5 of Block 60 of Hancock's Survey of 35 Acre Lots, Los Angeles City, purchased by J. F. Hollenbeck from Gaston Oxarard (see book 115 page 302 of deeds Los Angeles County records,) and by W<sup>m</sup> H. Workman from J. E. Hollenbeck (see book 114, page 250 of deeds Los Angeles County records) said tract being colored red on this plat, 2<sup>nd</sup> Fractional Blocks I and F, and Lots 9, 10, 11 and 12, of block H and frac. lots 1, 3, 5 and 7 of block K and Johnston St., of a survey of lot 5 block 60 of Hancock's Survey, subdivided by Moore and Kelleher in 1877, and re-subdivided in this survey, being colored green herein.

Comp'd  
A.S.J.



FOR ST LOUIS ST. SEE ORD. 28151.  
Lot 44 to L. A. City Sch. Dist. D. 31-64 O.P. 172.43

Medic. Alley S.W. of lots 66 to 72 Ord. 38995



Recorded January 18<sup>th</sup> 1889  
at request of Wm. H. Workman.

58