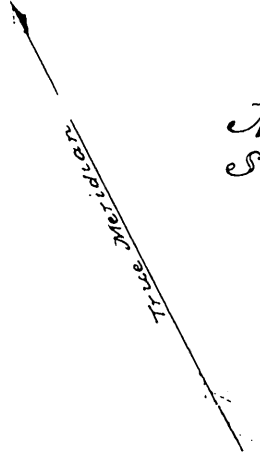
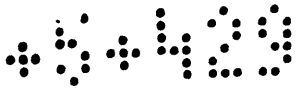
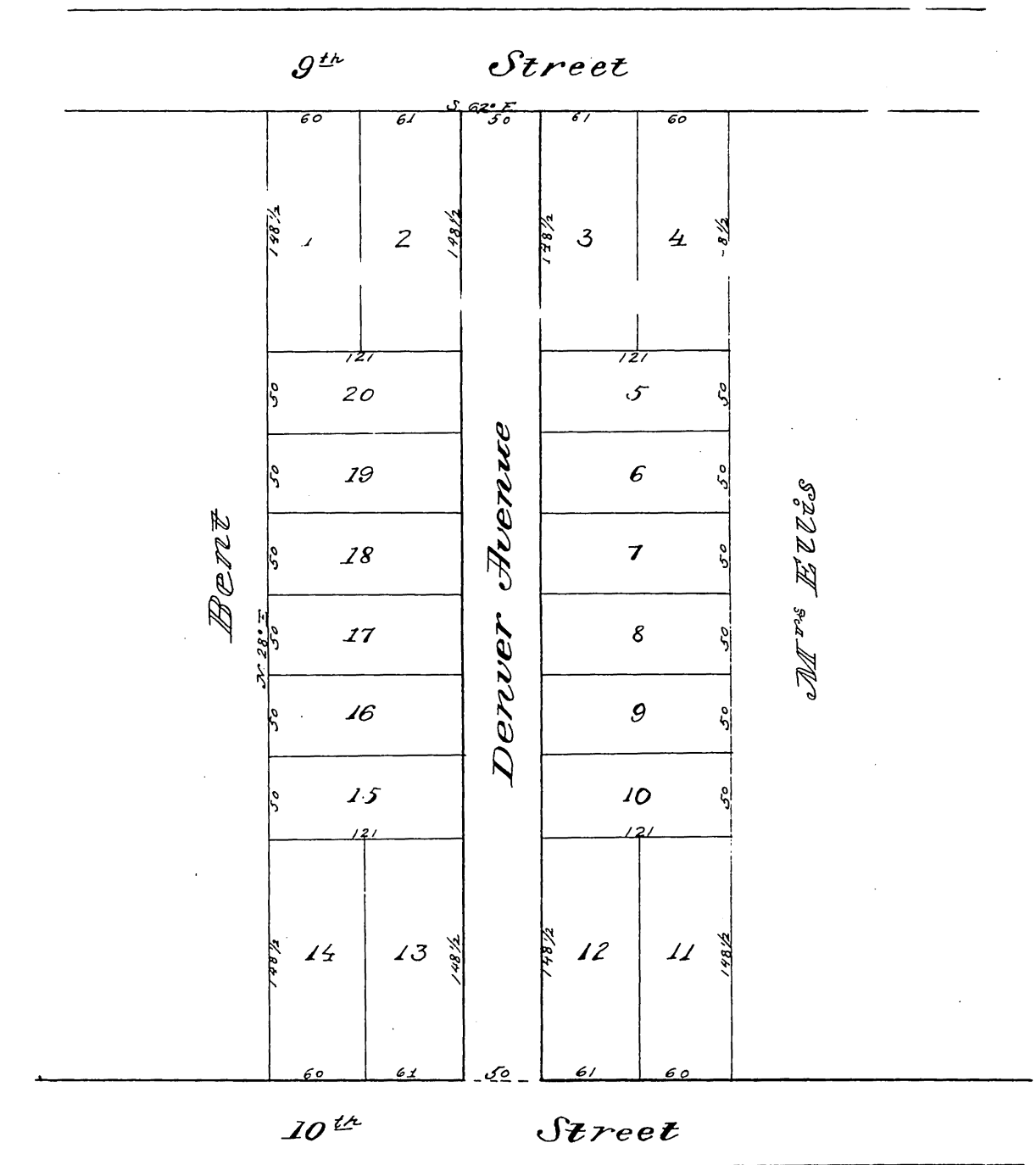


MR 5-429



Map  
 of  
 Merriam, Marsh & Gardner's  
 Subdivision of a part of Lot 1 Block  
 36 Hancock Survey  
 Los Angeles City Cal.  
 Made December 11<sup>th</sup> 1883  
 by J. A. Bernal Surveyor  
 Scale 60 feet to one inch.



Original reduced to scale of 100 ft. per inch.

Recorded February 5<sup>th</sup> 1884  
at request of I. A. Gardener.

comp'd J.A.B.