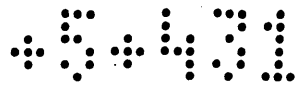


MR 5-431



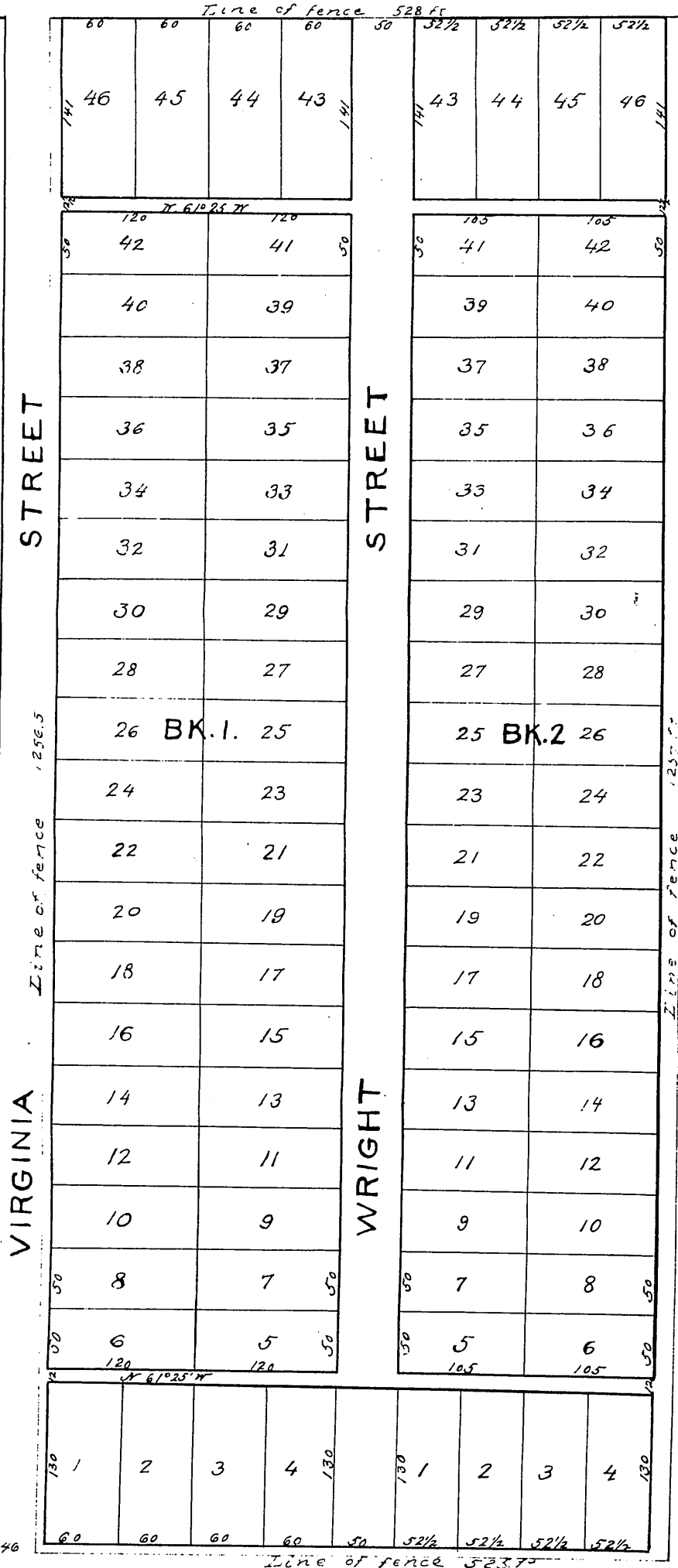
Wright's Subdivision OF THE SISTERS OF CHARITY TRACT

Sur' by James Teal C E
Jan'y 1884

Scale 120 ft. to 1 inch.

CHERRY ST

ROULAND STREET



Widening 16TH St See C.F. 501

PICO STREET

Recorded Jan'y 24 1884
at request of F. H. Wright.

copy of
1884