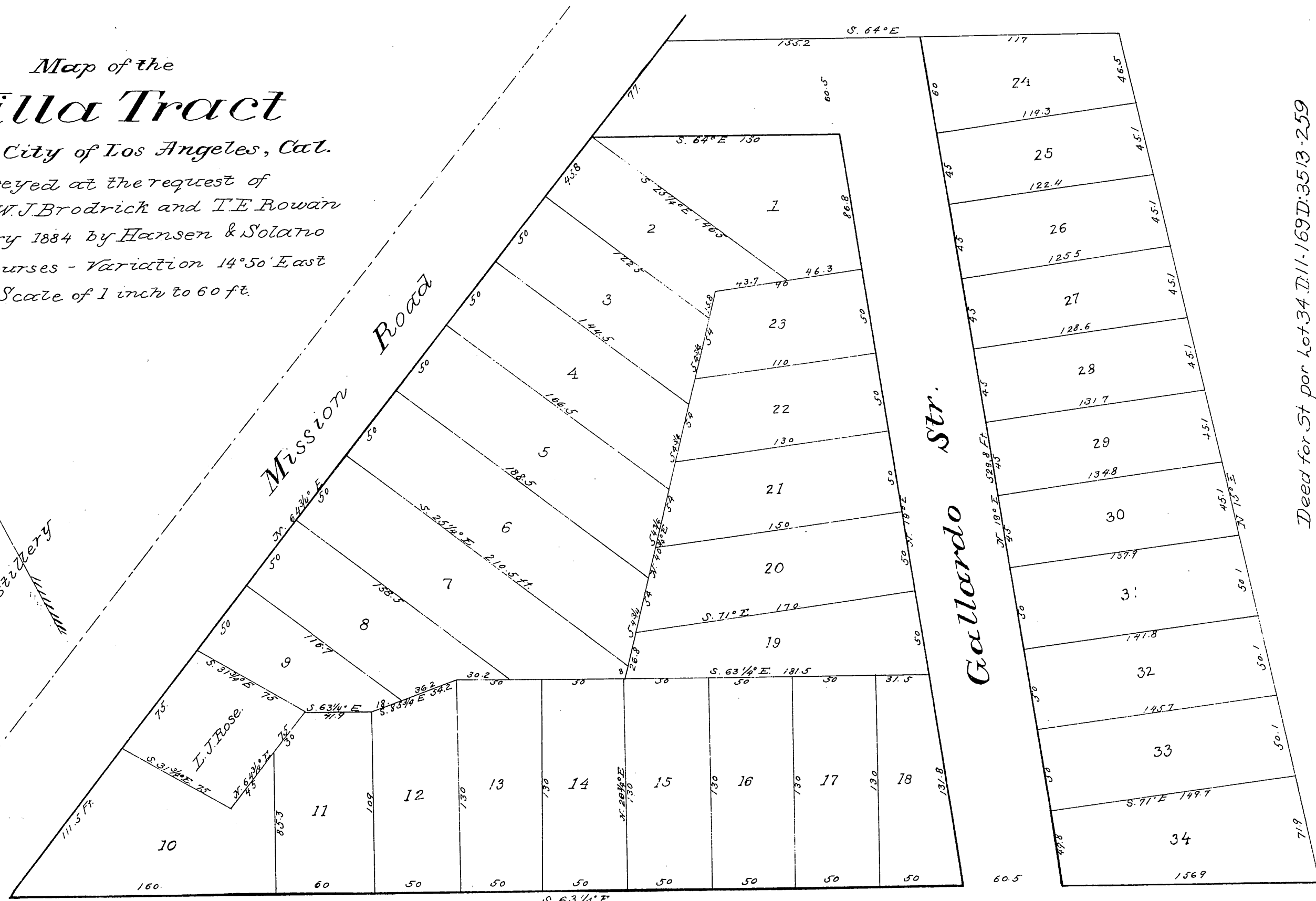


Map of the Villa Tract

in the City of Los Angeles, Cal.
 surveyed at the request of
 Messrs W.J. Brodrick and T.E. Rowan
 January 1884 by Hansen & Solario
 True courses - Variation 14° 50' East
 Scale of 1 inch to 60 ft.

Wern & Rose's Distillery



Deed for St. for lot 34 D:11-169D:3513-259
 Macey St. established - Ord. 40,067

Recorded 30 January 1884
 at request of W.J. Brodrick.

Macey Str.

Bridge

MR-5-214

Hansen & Solario