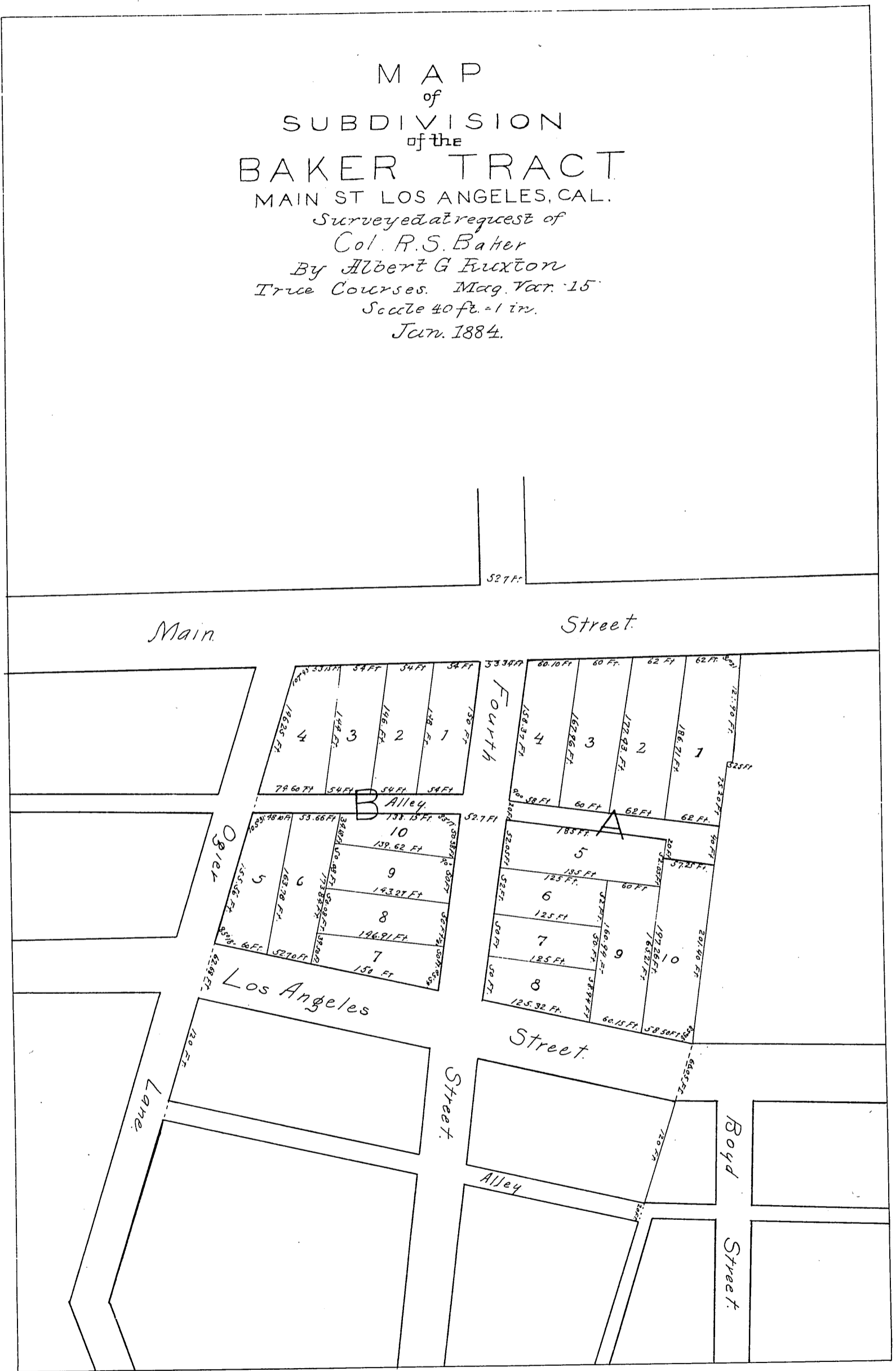


MR 5-459

MAP
of
SUBDIVISION
of the
BAKER TRACT
MAIN ST LOS ANGELES, CAL.
Surveyed at request of
Col. R. S. Baker
By Albert G. Fuxton
True Courses. Mag. Var. 15'
Scale 40 ft. = 1 in.
Jan. 1884.



Scale reduced to 120 ft. to 1 in.

Recorded at request of J. A. Graves Feb 1. 1884
widening Los Angeles St 3rd to 4th CF 604

Handwritten initials or signature in the bottom left corner.