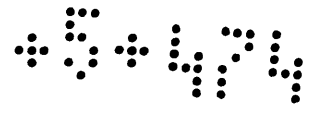


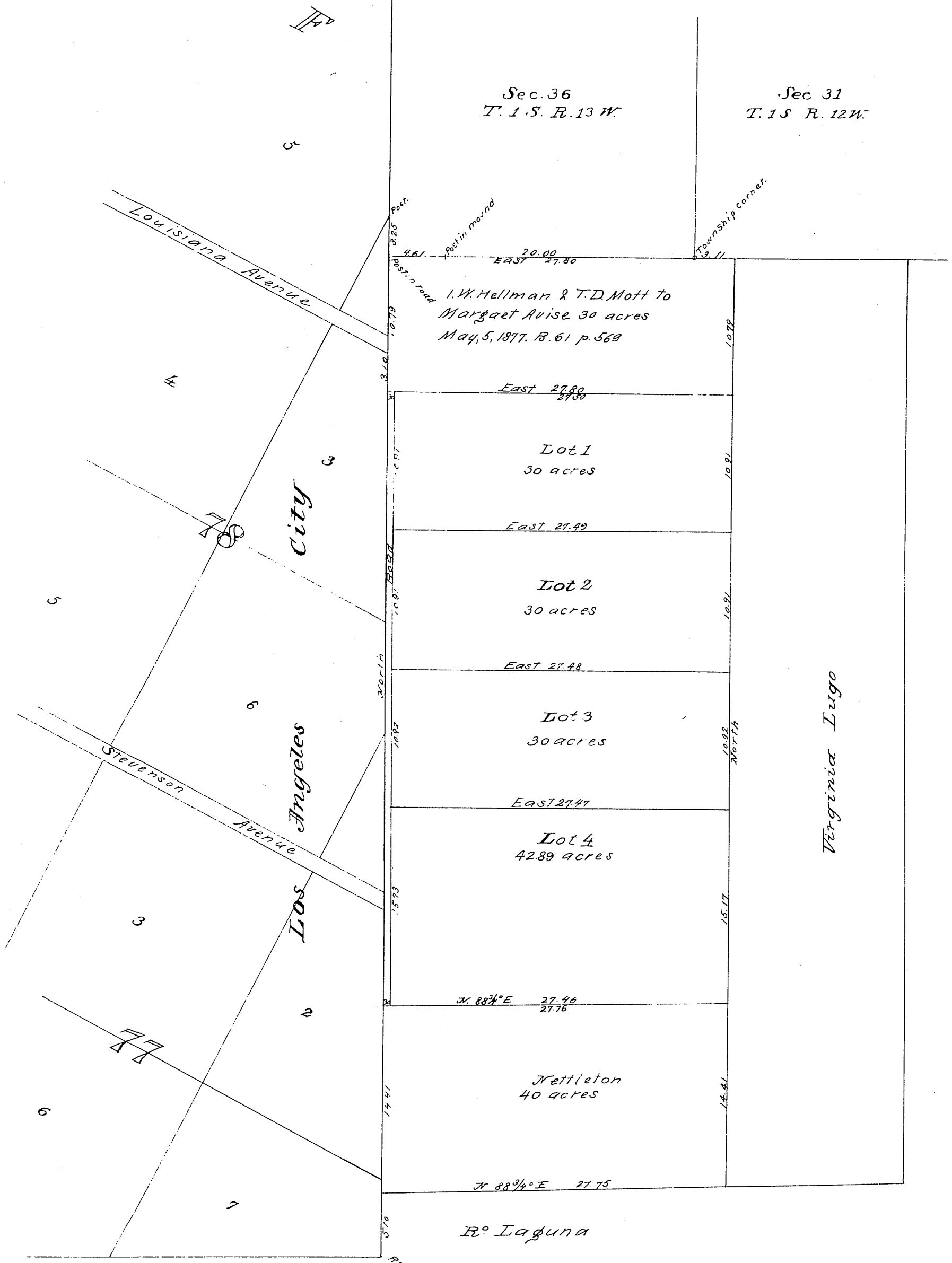
MR-5-474



Map of Esmelda

being the tract of land of the Rancho San Antonio in the Co. of Los Angeles, California, allotted in a partition made by the 17th District Court in Case No 2055 to Esmelda Lugo and belonging to I. W. Hellman.

Surveyed November 1883 by Hansen & Solano True Courses. Var. 14°45' E. Scale: 1 in. to 8 chs.



Recorded March 1, 1884.
at request of I. W. Hellman.