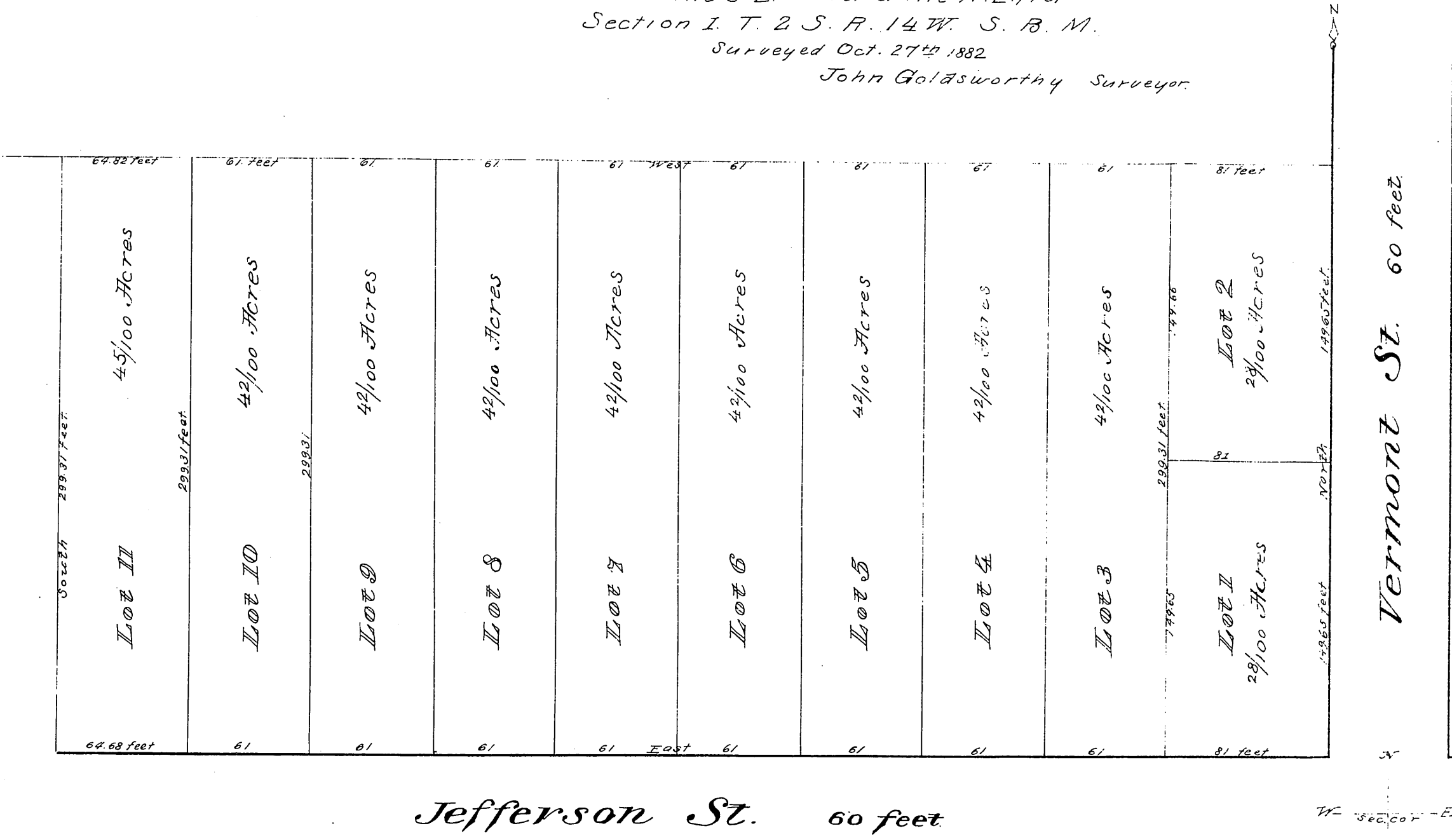


Comp'd  
D.T.

# MAP of the LOTHIAN TRACT

in the S.E. corner of the N.E. 1/4 of  
Section 1. T. 2 S. R. 14 W. S. B. M.  
Surveyed Oct. 27<sup>th</sup> 1882  
John Goldsworthy Surveyor.



Original reduced to scale of 60 ft per inch.  
Recorded March 19<sup>th</sup> 1884  
at request of Willmore & Hough.  
Scale 60 feet per inch.

