

MR-5-503



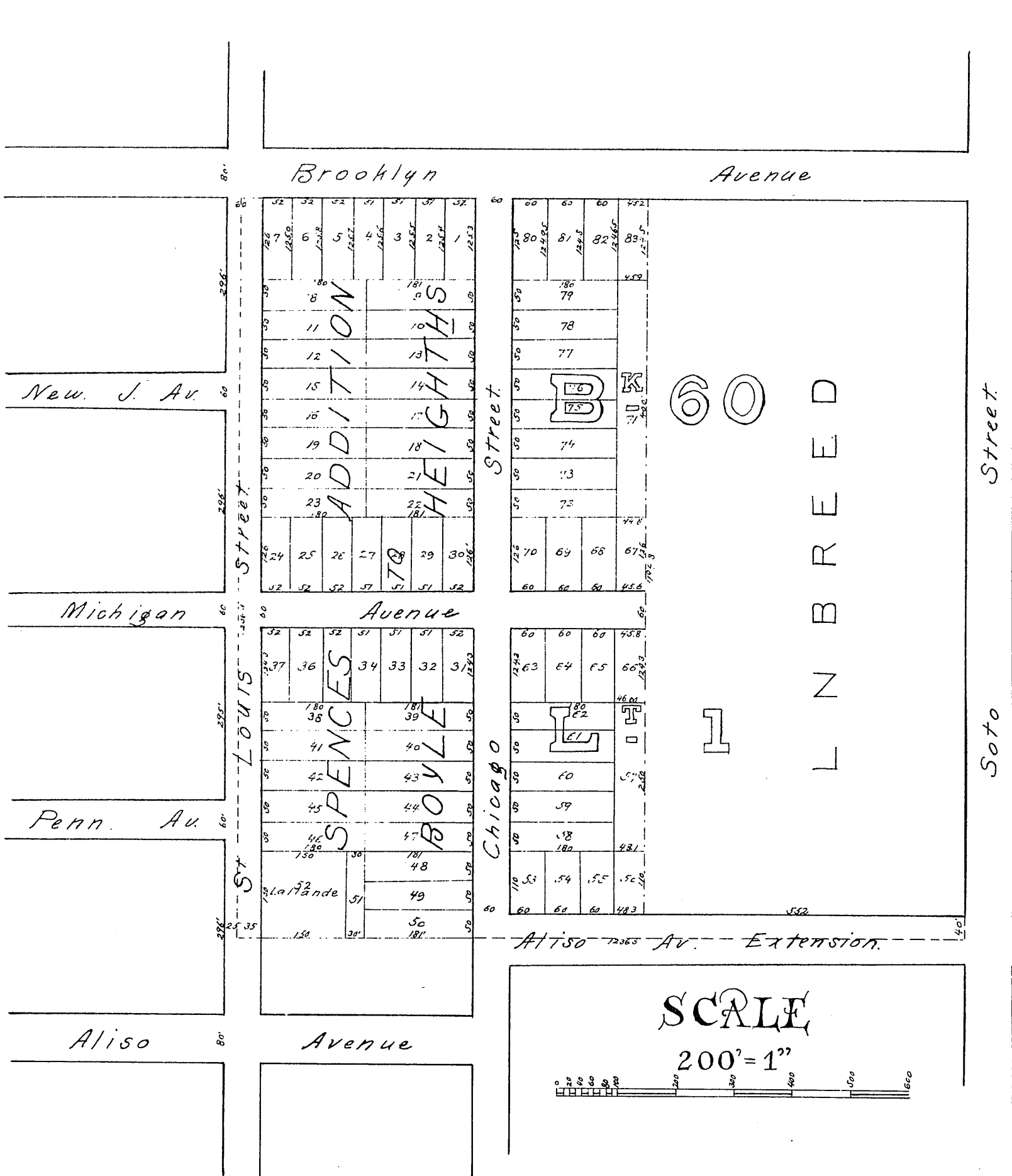
# SPENCES ADDITION TO BOYLE HEIGHTS

of the City of  
**Los Angeles**

Being a subdivision of the Westerly part of Lot 1  
Block 60, Hancock's survey of 35 ac. Lots  
subdivided at the request of

**W. B. Workman.**

FOR ST. LOUIS ST. SEE ORD. 28151.



Copy  
1/1/84

Recorded March 21, 1884  
at request of W. B. Workman.