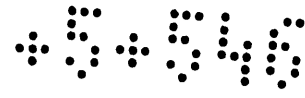


MS-5-54

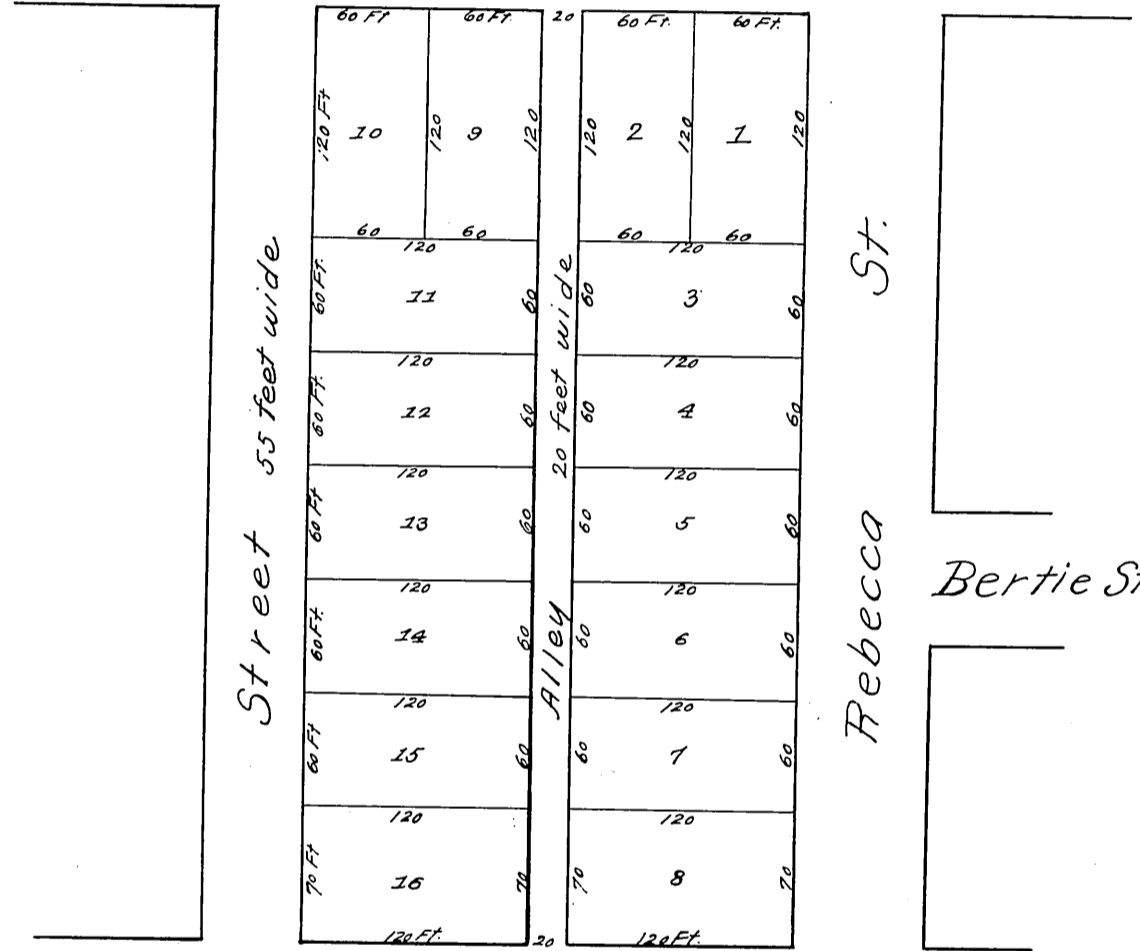


MAP

A. CRABB'S SUBDIVISION
 of the East 1/2 of
 Block 159
 of the
 POMONA TRACT
 as subdivided by Stoddard & Taylor Surveyors.

Scale 50 feet to 1 inch

Libbie St.



S. P. R. R.

First St.

Original reduced to the scale of 100 feet to the inch
 Recorded May 1, 1884 at request of A. Crabb.

Libbie St changed to Monterey Ave Ord 319.D:6-182