

MR-5-552



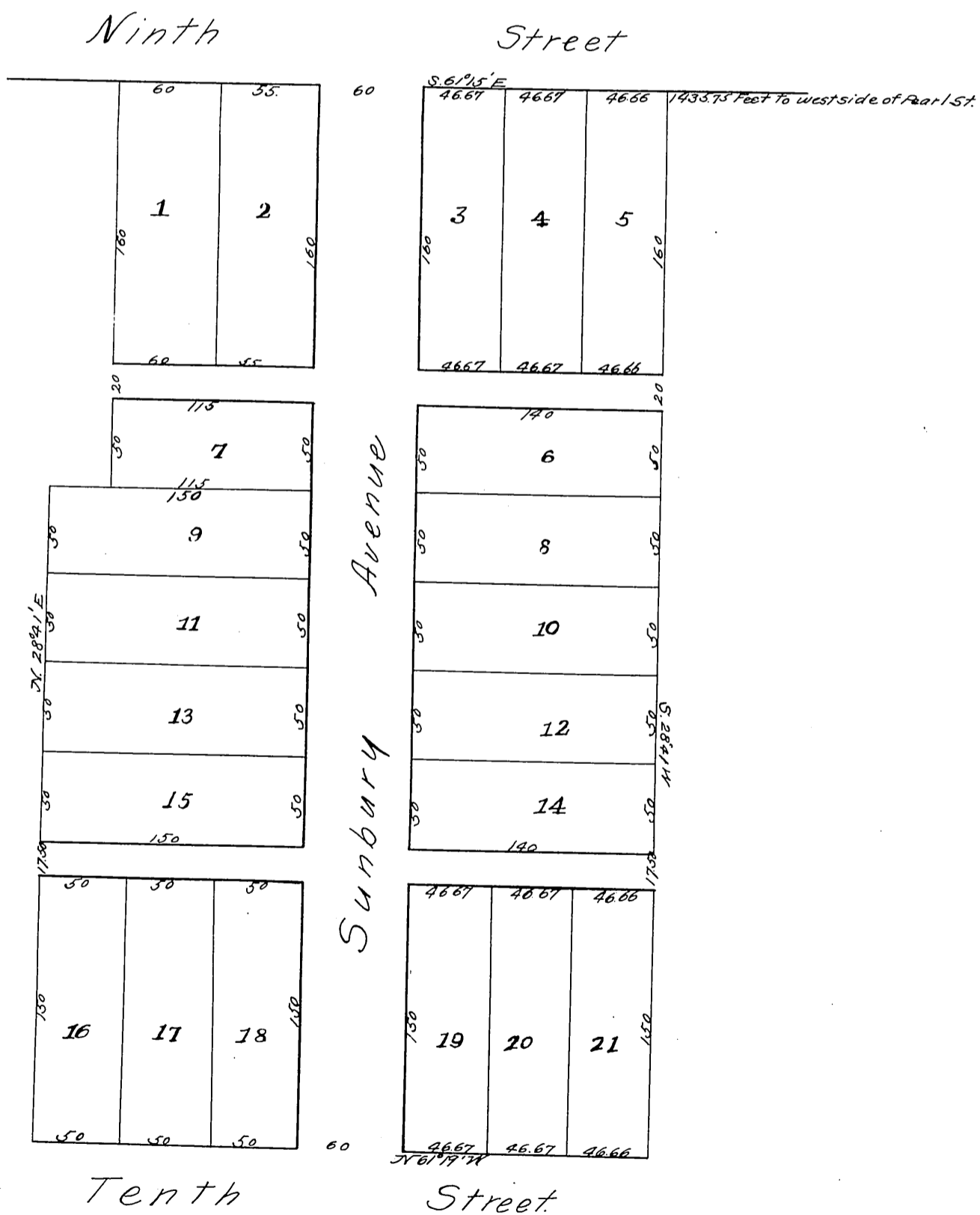
MAP OF THE DUNKELBERGER TRACT LOS ANGELES CAL

Surveyed in April 1884.

by E. T. Wright.

Scale 50 feet per inch.

Being portions of Lots 1 and 2
Los Angeles City Cal.



Original reduced from the Scale of 50
to 80 feet per inch, recorded at request
of J. Booth. May 15 1884.

[Handwritten initials]