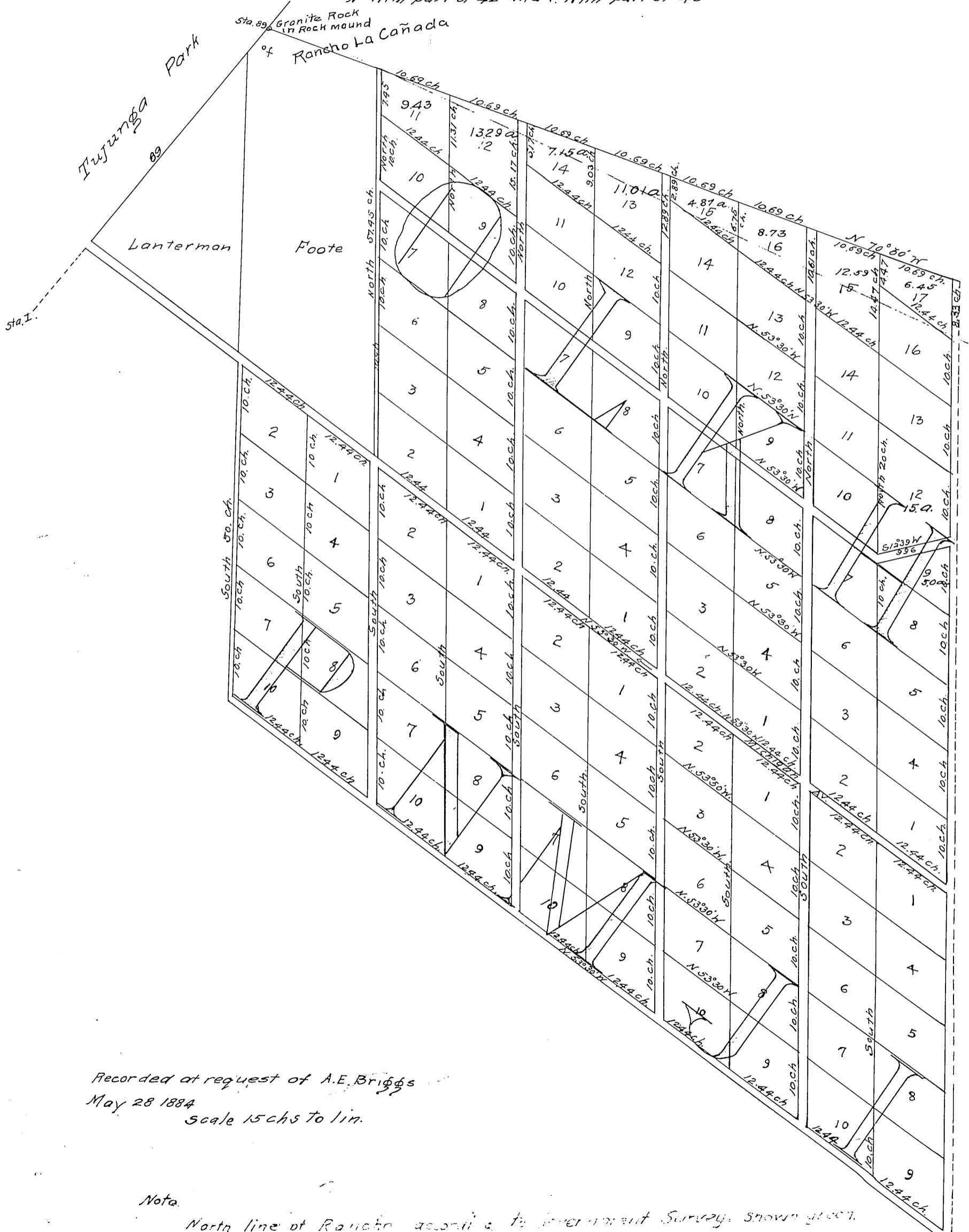


416

416

The blocks marked in large Capital letters on this map are identical with certain whole lots and the North portion of certain other Lots shown by numbers on map Recorded in Book 4 Miscellaneous Records Page 351 They Correspond as follows
 Block C is identical with lot 29 D with 32, G with 33, H with 36, K, with 37, L with 40, and O with 41; A is identical with part of lot 27, B with part of 30, E with part of 31, F with part of 34, I with part of 35, J with part of 38, M with part of 39, N with part of 42 and P with part of 43



Recorded at request of A.E. Briggs
 May 28 1884
 scale 15 chs to lin.

Note
 North line of Rancho according to Government Survey shown at 100 ft.
 Por. lot 9 Blk. F for Montrose Ave. D: 37-228 O.R. 2832-126
 Por. " 10 " E " " " " D: 37-229 O.R. 2894-18
 Por. " 10 " F " " " " D: 37-229 O.R. 2834-75
 Por. " 9 " B " " " " D: 37-287 O.R. 2848-270
 Por. " 10 " F " " " " D: 37-297 Cert. BG-21191
 Por. " 10 " F " " " " D: 39-9 Cert. 80-23599
 Names of Lowell, Boston, Dunsmore, New York, Pennsylvania, Ramsdell, Los Angeles
 Rosemont and Briggs Avenues established. D: 13-258 R.B. 30-83

416

MR-5-575

PLAT OF CRESCENTA CAÑADA

Being Lots 29, 32, 33, 36, 37, 40, 41 and portions of Lots 27, 30, 31, 34, 35, 38, 39, 42, 43

Rancho La Canada
Recorded in Book No 4 Miscellaneous page 3.
Full Lots in Blocks B and C contain 11.025 acres.
Full Lots in all other Blocks contain 10 acres.
All roads are 1 chain wide and estimated as being contained in the Lots they face, except the roads on the eastern boundary of Blocks A. and C, and the roads on the Western boundary of Blocks O. and P. they being 1/2 chain wide and estimated as other roads

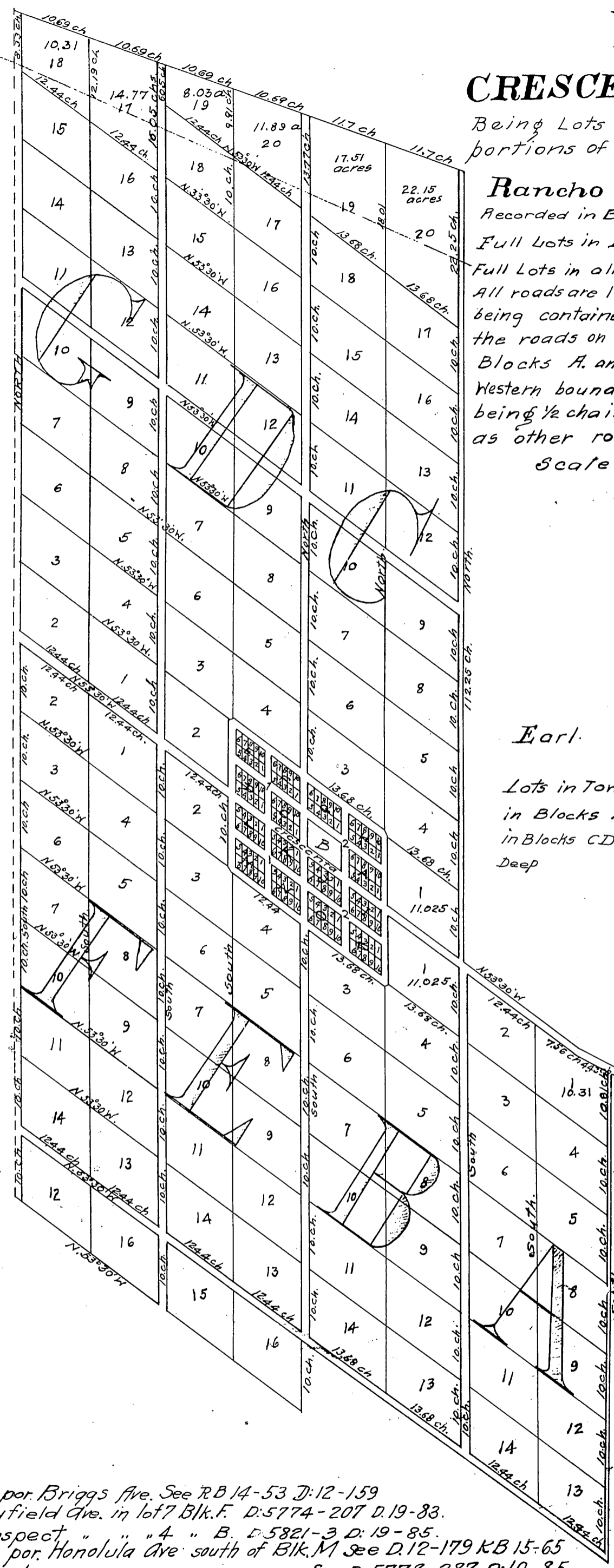
Scale 10 chains to one inch.

T. D. Lanterman
Surveyor

Earl.

Lots in Town site Crescenta in Blocks A, H, I, J, O, P being 74 ft. x 124 feet Deep in Blocks C, D, E, F, K, L, M, N. being 65 feet by 124 feet Deep

For Deeds establishing Dyer St see D:13-142 R:B22-270



Estab. name of Mary St D:13-152 R.B. 23-297
Por. of Lot 4, Blk. E for school purp. D:37-34 O.R. 1882-8
Por. " " 10 " F " Montrose Ave. D:42-207 O.R. 3560-155.
Names of Lowell Boston, Dunsmore, New York, Pennsylvania, Ramsdell, Los Angeles, Rosemont & Briggs Aves. D:13-258 B.B. 30-85.

Vac. por. Briggs Ave. See R.B. 14-53 D:12-159
Mayfield Ave. in lot 7 Blk. F. D:5774-207 D:19-83.
Prospect " " " 4 " B. D:5821-3 D:19-85.
Vac. por. Honolulu Ave south of Blk. M see D:12-179 KB 15-65
Deed " " " " Lot 7. See D:5778-287 D:19-85
" por. " " " SWly por. Blk. P see DM6278-12 DM6236-297 C.S. 8009
" " Lot 10 Blk. A & por. Lot 10 Blk. B see M. 37-288 D:5505-215
Por. Honolulu Ave. vac. Sof Blk. A see D:26-164 OR 857-164
Por. of lot 4 Blk. A for St. D:29-296 O.R. 734-4
Por. lot 6. Blk. A, for Altura Ave. D:43-229 O.R. 3872-305
D:45-96 O.R. 4205-263

Copyright by J.C.