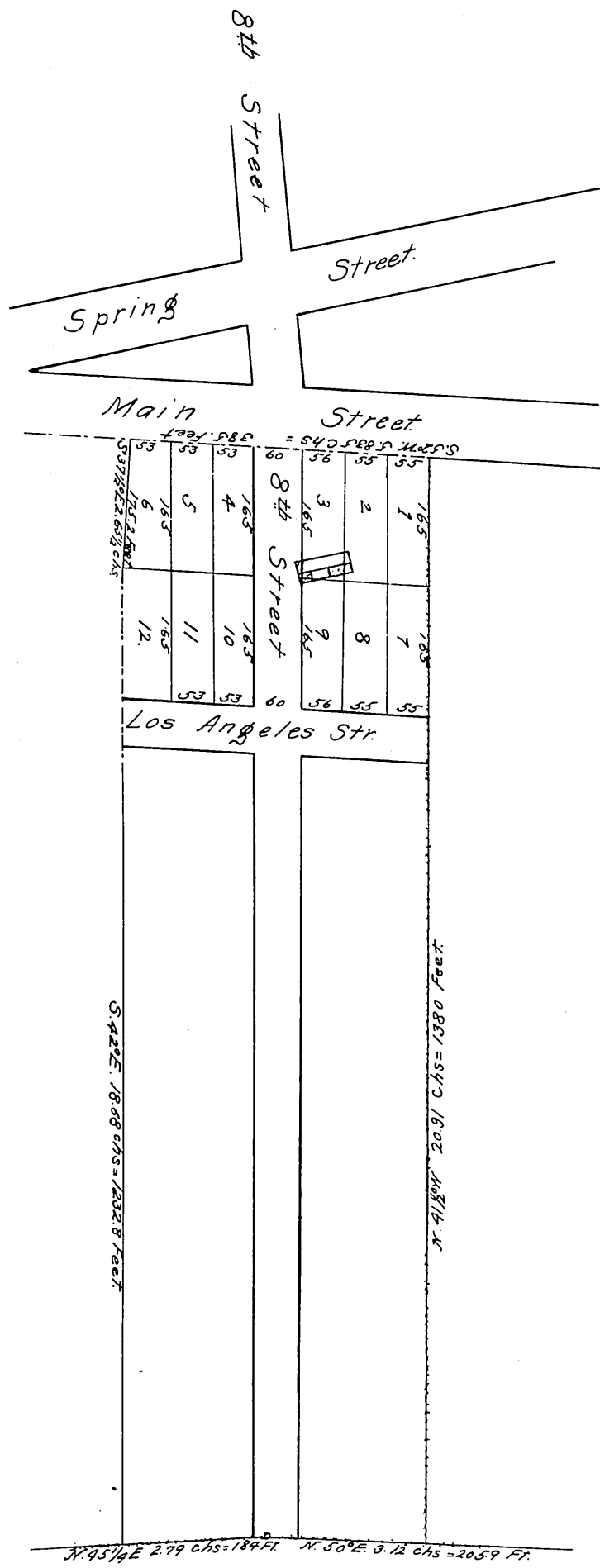


MR-5-578



Map of the Widow Botiller Tract
 in Los Angeles City Surveyed May 7, 1884
 by Hansen & Solano. True courses Var. 14° 30' E.

Scale of 1 inch to 80 feet.

Original reduced from 80 to 200 feet to one inch.
 Recorded at request of Maria Reyes de Botiller
 May 17, 1884