

MR-5-579

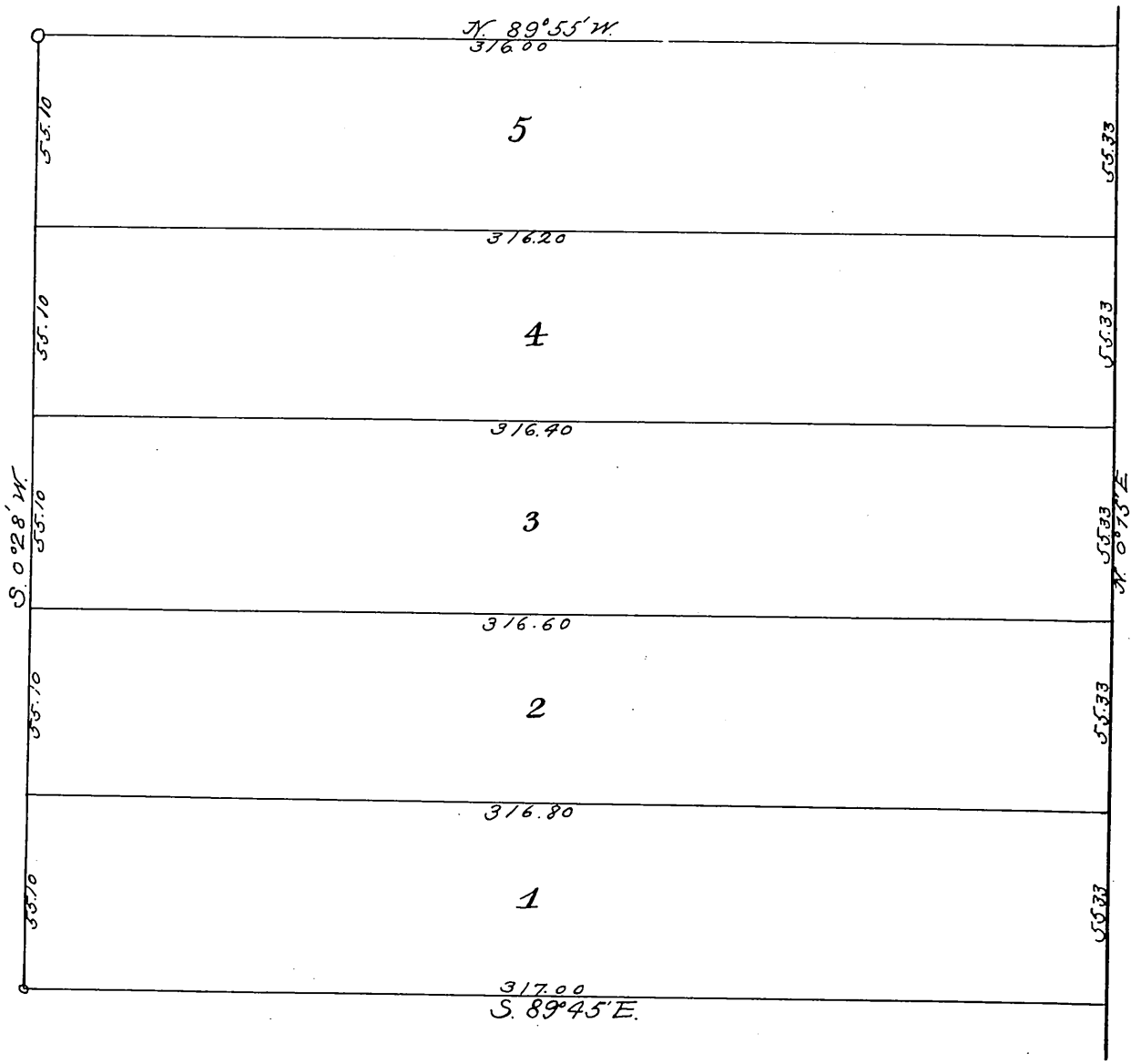
MAP
 of
 V. PONET'S SUBDIVISION
 of Lot No II
 of

GRIFFIN'S ADDITION TO EAST LOS ANGELES CAL
 (as per map recorded in Book 3 page 194 Misc. Records.)

Surveyed May 1883

By E. T. Wright.

Scale 30 ft. per inch.



Daily Street

Original reduced from scale of 30 to 50 feet per inch.
 Recorded at request of V. Ponet May 17 1884.