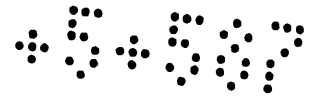
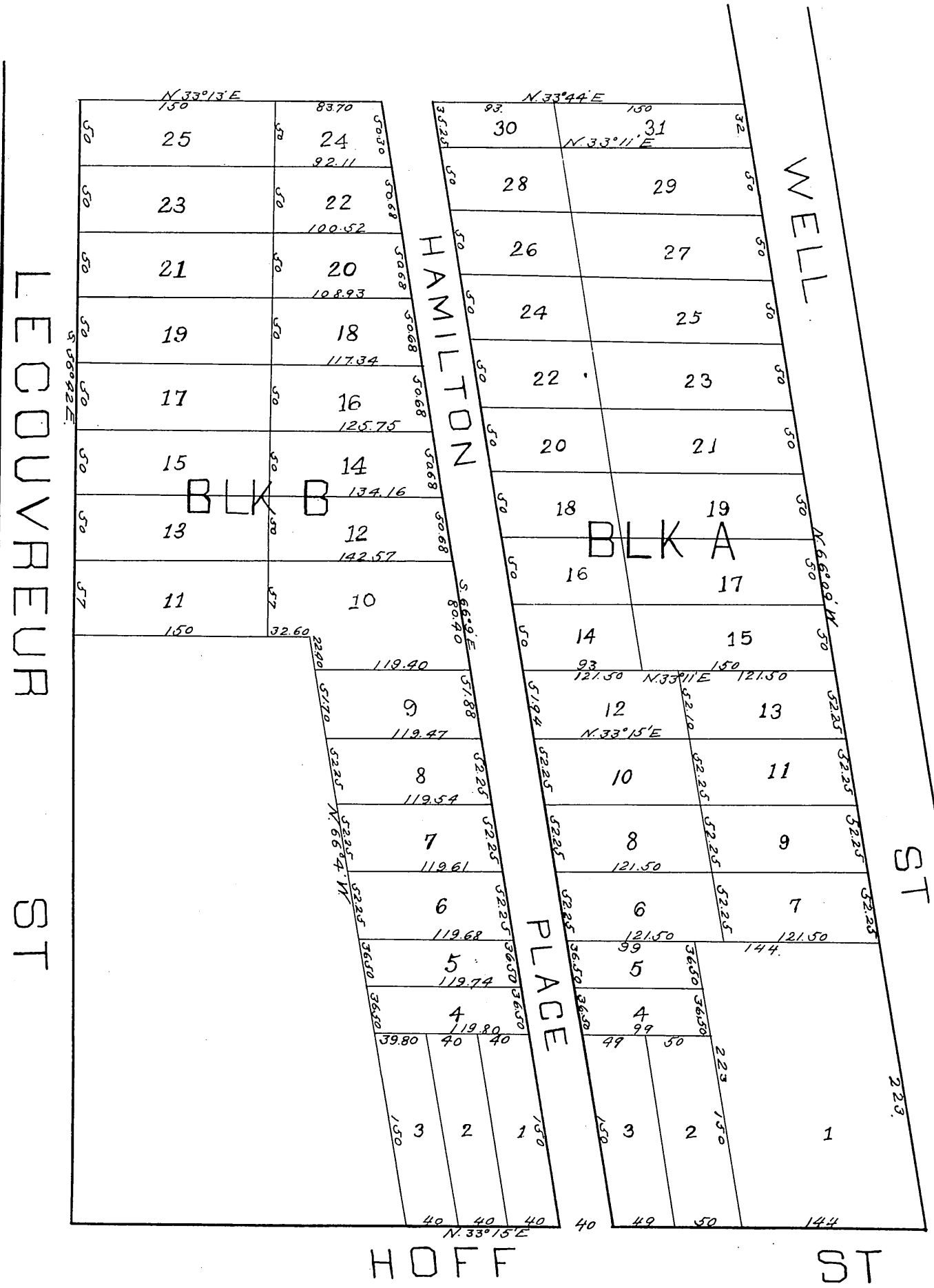


MR-5-214



MAP
OF
BEACH'S SUBDIVISION
OF
Lots 4, 5, 6, and 7 of
GRIFFINS ADDITION, EAST LOS ANGELES
and Lots 10, 11, 12, 13, 14, 15 and 16. Blk. C adjoining
Surveyed May 1884
by E. T. Wright.
Scale 50 feet per inch.



Original reduced from scale of 50 to 100 feet per inch
Recorded at request of E. M. Hamilton
June 14, 1884.

Dedic. land in lots 22 and 23 for Barranca St. Ord. 39183