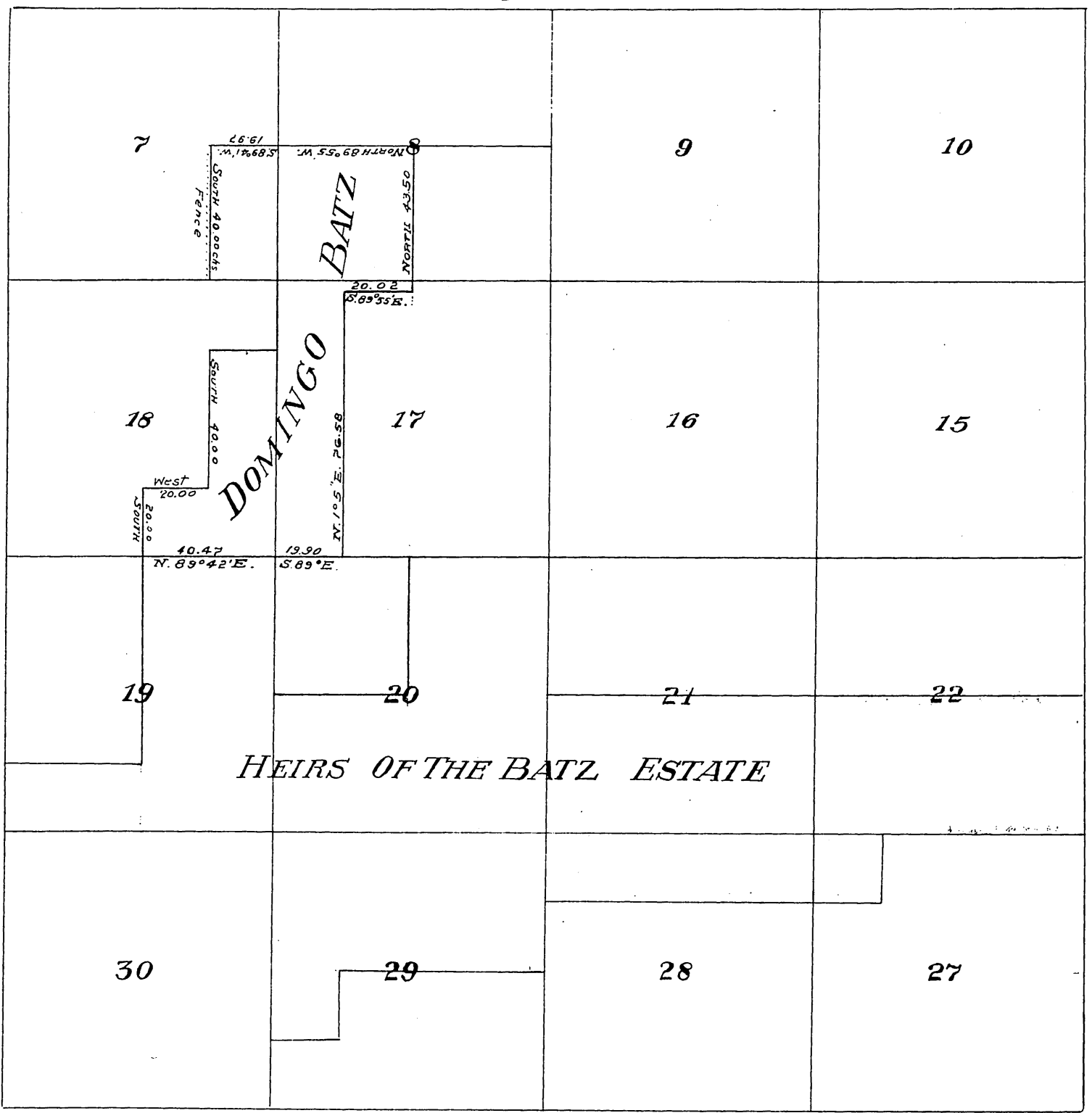


Township N° 1 South Range N° 12 West S.B Meridiam



Map of that portion of Land
 distributed to heirs of Catalina
 Batz deed No. 1388 Supr. Ct. deeded
 by heirs on Voluntary partition.
 June 5th 1884 to Domingo Batz.

Huntington Drive deed - D:2764-69-D:10-20

RECORDED AT REQUEST OF H.W. O'MELVENY
 JUNE 7 1884.