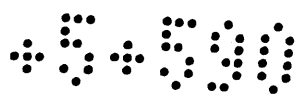
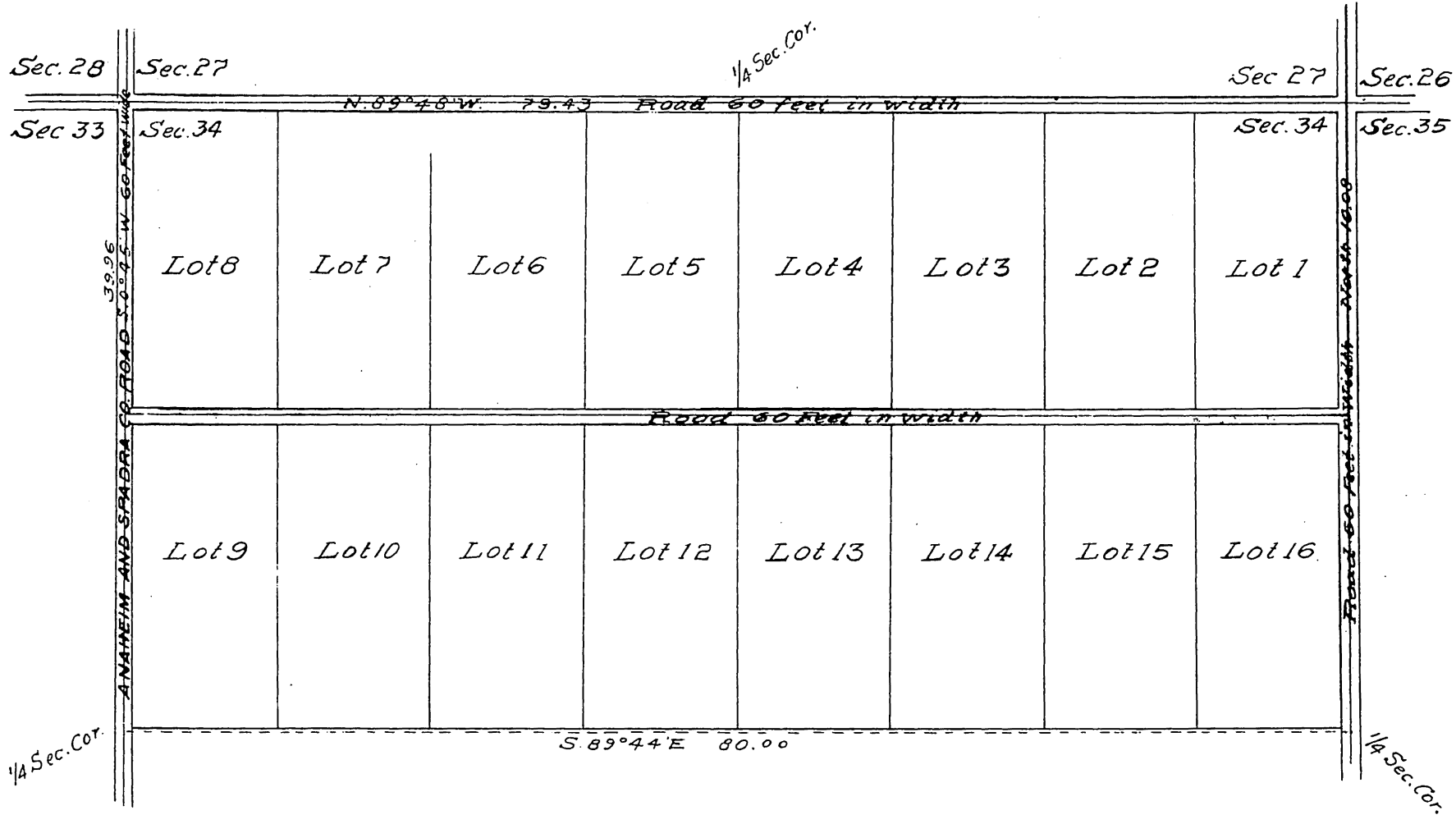


MR-5-590



PLAT
 OF THE
MILES BROS'S SUBDIVISION
 OF THE FORTH HALF SEC. 34 T. 3. S. R. 10 W.
 NEAR
 ANAHEIM LOS ANGELES CO.



NOTE: Acreage includes areas within red lines and each subdivision contains 20 acres.

Scale 5 chains to one inch
 True Courses
 Magnetic Variation 15° 10' E.

REDUCED FROM SCALE OF 5 TO 10 CHAINS TO ONE INCH
 RECORDED AT REQUEST OF MILES BROS. JUNE 30 1884