

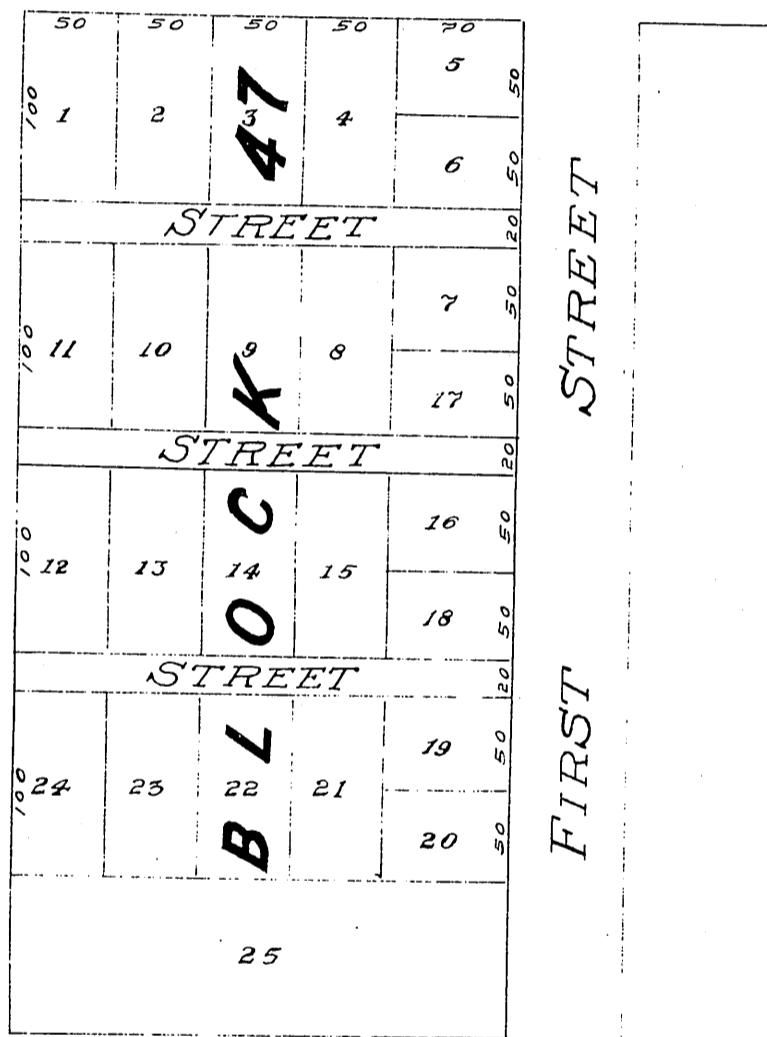
MR-5-591

PLAT
OF
JANES SUBDIVISION
OF
BLOCK 47

TOWN OF SAN PEDRO

SCALE 100ft. to 1inch SUR. BY G.B.KING

PALOS VERDES STREET



CENTER STREET

Recorded at request of J.F. James July 9 1884

Santa Cruz Ct. changed to Armona Ct. Ord. 36025
Center Ct. " " Elwell Ct. Ord. 36026
Palos Verdes Ct. changed to Arboles Ct. Ord. 36066