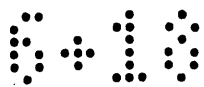
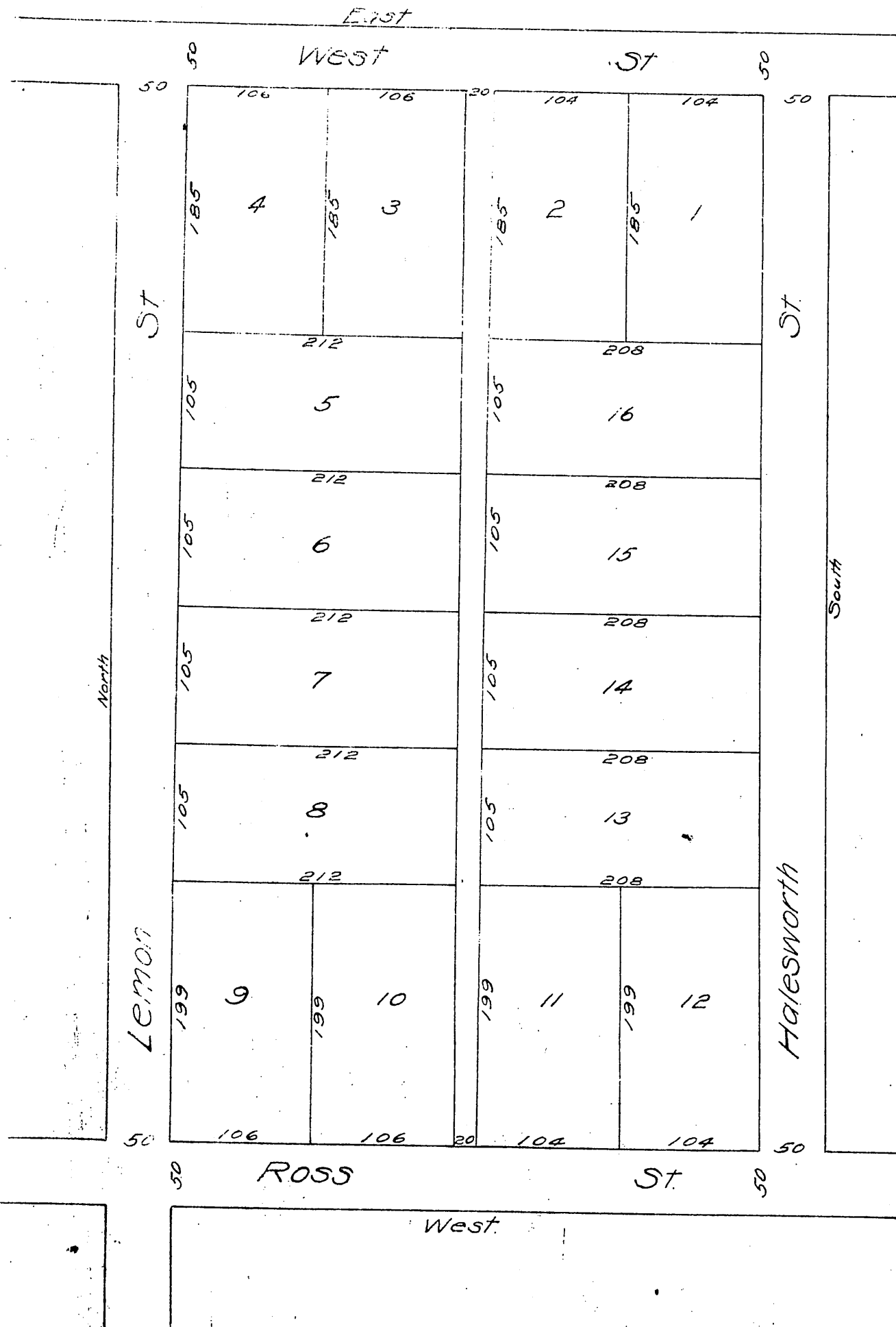


MR-6-18



PLAT of HALESWORTHS ADDITION

to the
Town of Santa Ana
Scale 50=1"



A full true and correct copy of the original
reduced from a scale of 50 to 100 ft. to 1 inch.
Recorded at request of W.W. Halesworth
July 26, 1884, at 30 min. past 12 M.

Chas. L. Miles

Co. Recorder

Gmp. KM