

MR-6-33

MAP of the NORDHOLDT TRACT

Situated on the East side of Wall Street
between SIXTH and SEVENTH Streets.
Los Angeles Cal.

Surveyed at request of:

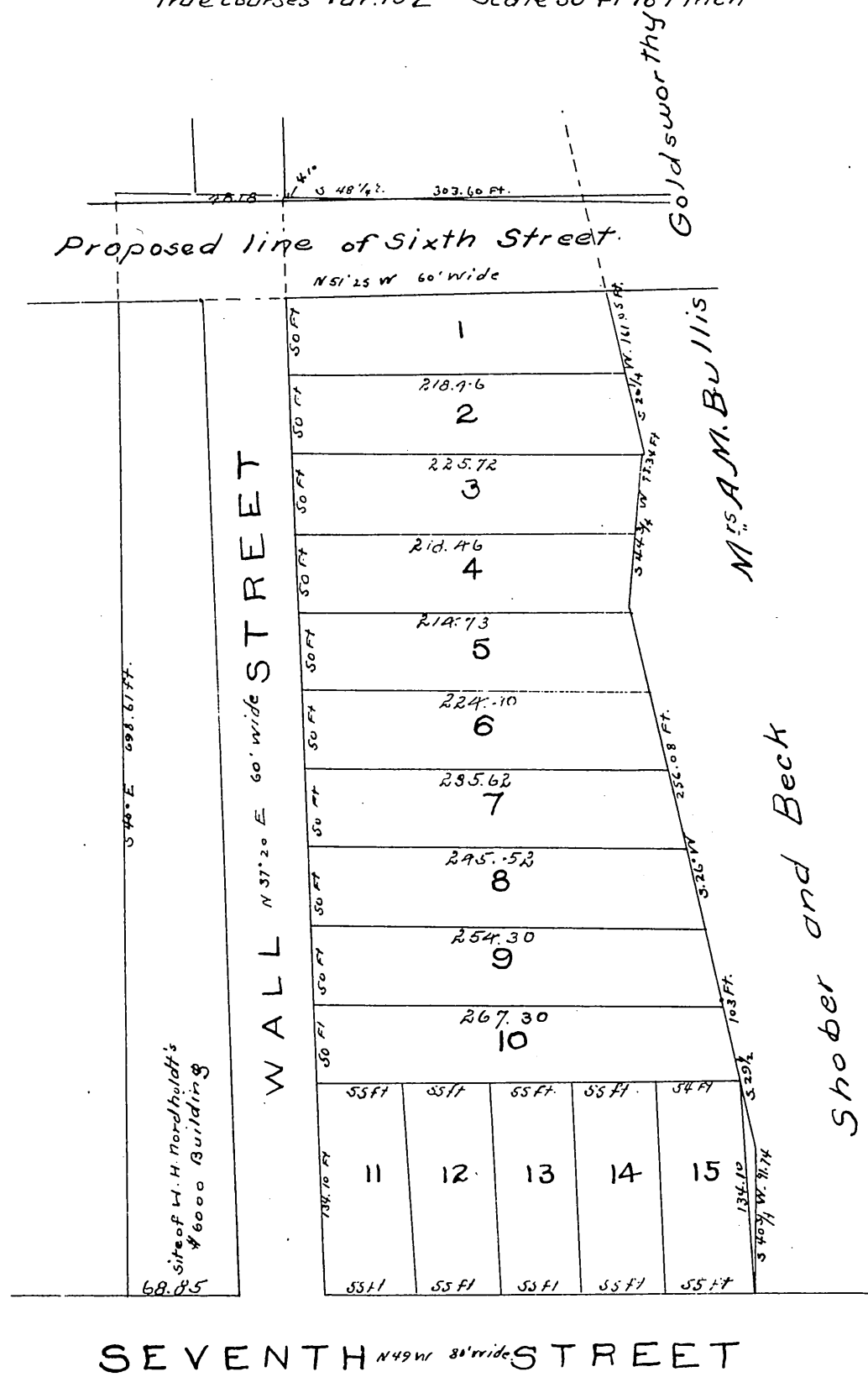
W. H. Nordholdt

by

John Goldsworthy

May 26th 1884.

True courses Var. 15° E Scale 50 ft to 1 inch



A full, true and correct copy of the original
reduced from a scale of 50 to 100 ft. to 1 inch
recorded at request of W. H. Nordholdt Aug.
19, 1884 at 35 min past 3. P. M.

Chas. E. Miles. Co. Recorder