

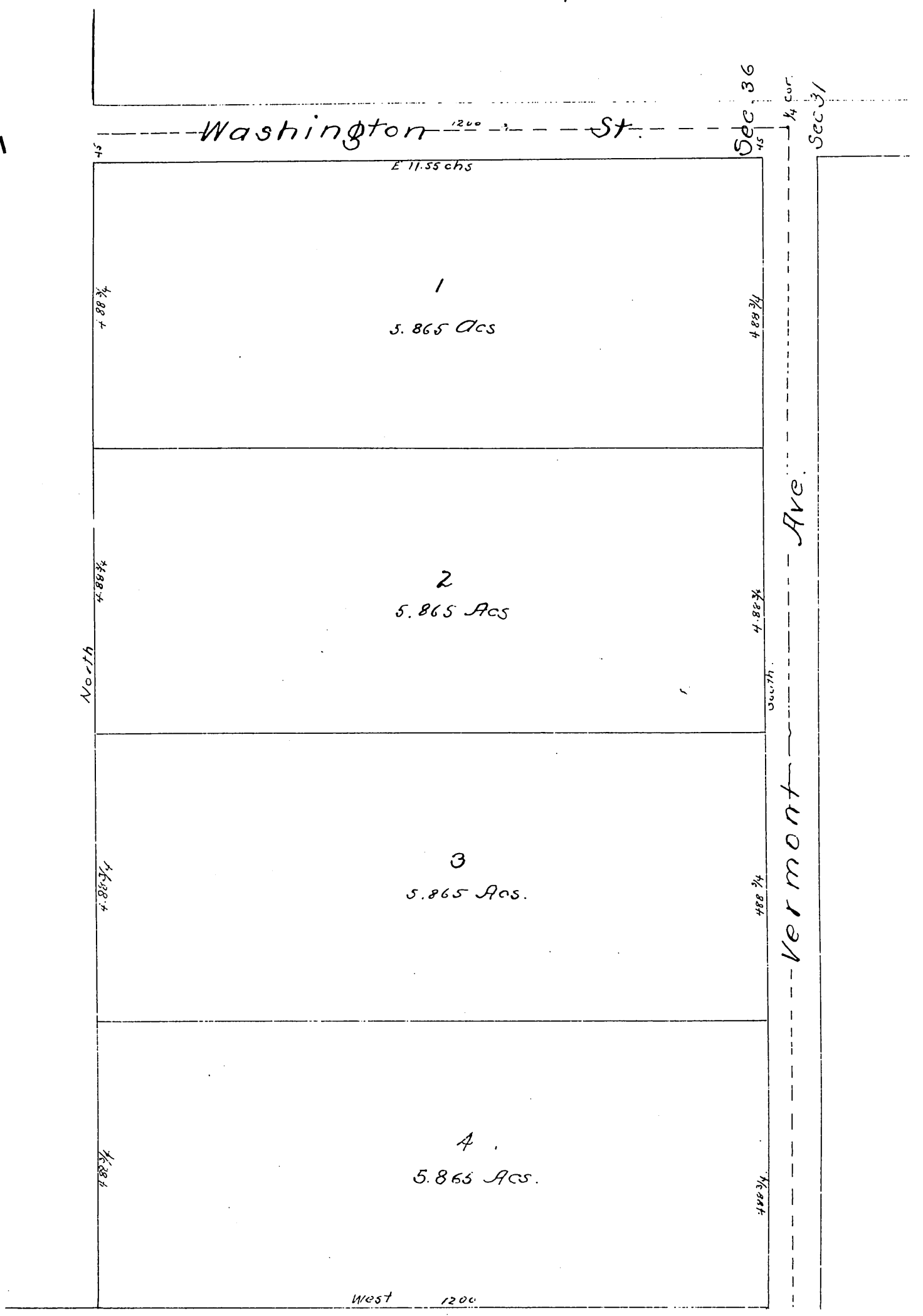
MR-6-34

MAP
 of
SIMON & HUBBARD'S SUBDIVISION
 of a portion of

S. E. 1/4 of Sec. 36, T. 1 S. R. 14 W. S. B. M.

Surveyed Sept 1884
by E. T. Wright

Scale 2. chs. per inch.



A full, true and correct copy of the original recorded Sep: 24th 1884 at 14 min past 3 P. M. at request of Simon & Hubbard

Chas E Miles. Co. Recorder