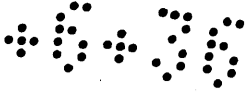
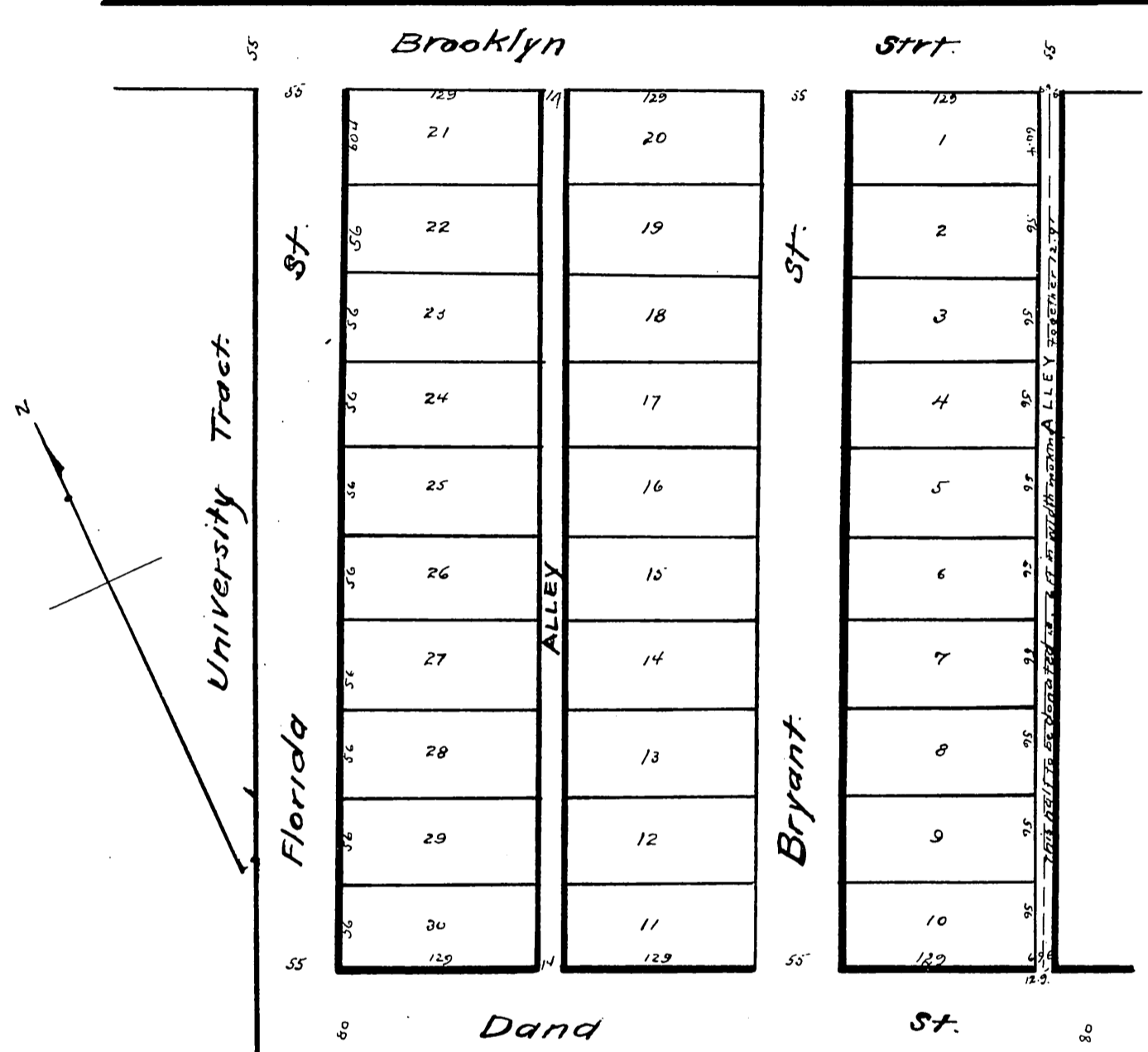


MR-6-36



SUBDIVISION of LOTS 6, 7, 8, 9, 10, 11 of the DANA TRACT.

by W. R. Blackman Del.
Sept. 1, 84.



F. C. Howies.

A full true and correct copy of the original reduced to scale of 100ft per inch recorded Sept 2nd 1884 at 15 min past 11 A M at request of H. Sinsabough.

Chas. F. Miller Co. Recorder.

by W. R. Blackman Deputy.