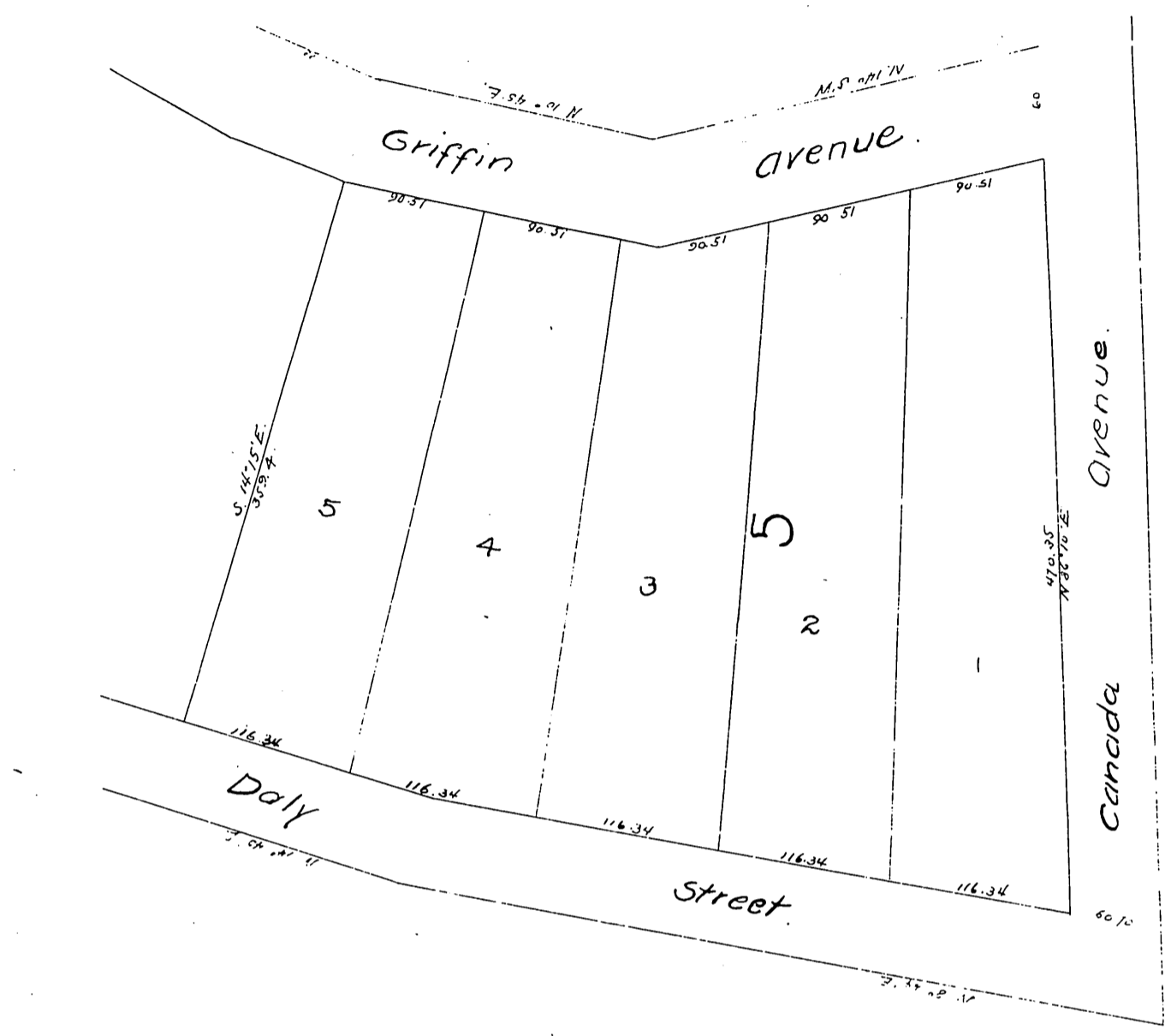


MR-6-38

MAP  
 of  
 McLEAN AND WILSON'S  
 Subdivision of Block 6  
 of the  
 FOOT HILL TRACT.  
 East Los Angeles.



A full true and correct copy of the original  
 recorded June 20<sup>th</sup> 1884 at 30 min past 9 A.M.  
 at request of G.W. Wilson

Chas. E. Miles Co. Recorder.