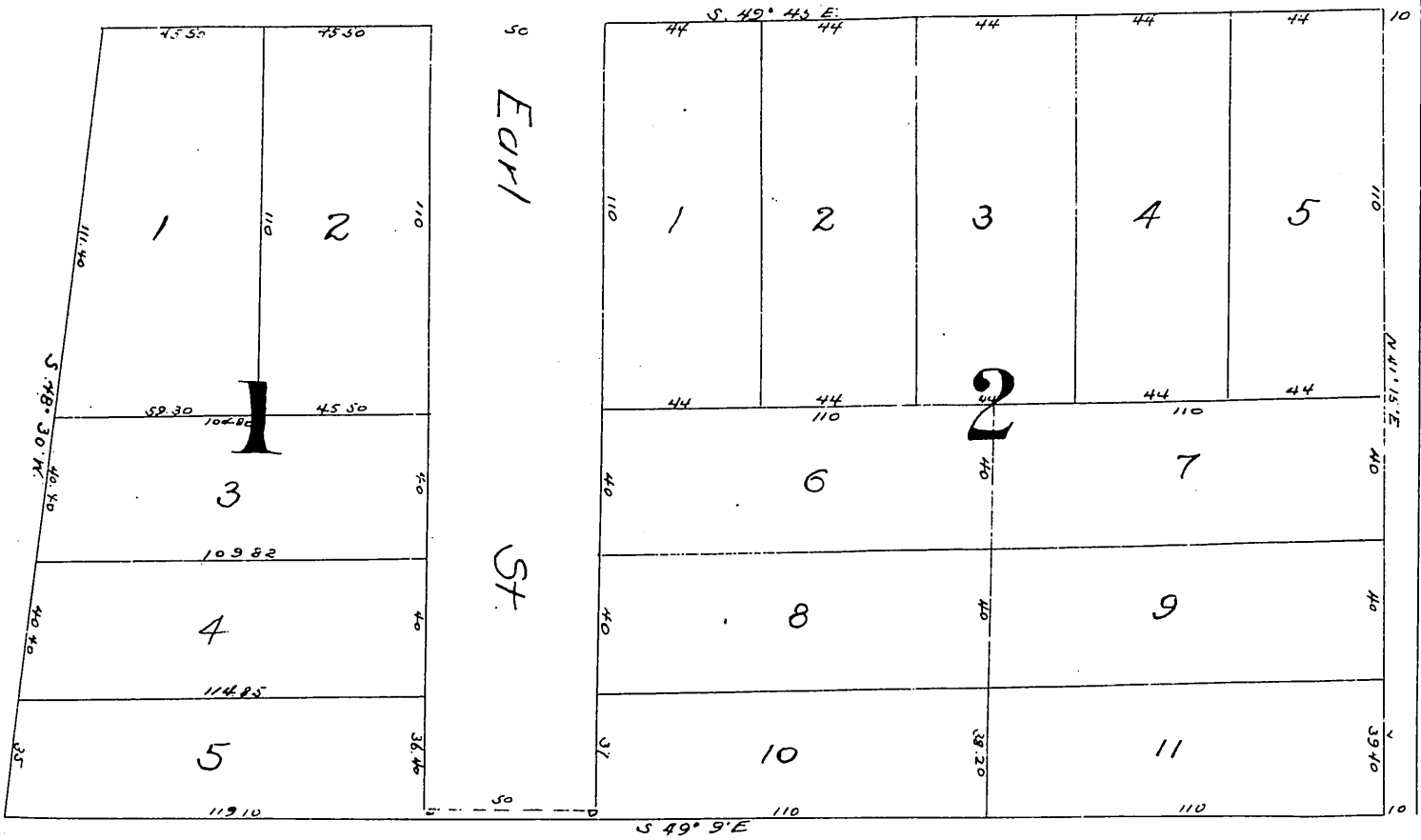


Seventh St.



# MAP

OF THE.

## ROWAN TRACT

LOS ANGELES CITY, CAL.

Surveyed July 1884  
by E.T. Wright.

Scale 50 ft to 1 Inch.

San Pedro

St.

A full true and correct copy of the original recorded Sept 15<sup>th</sup> 1884 at 47 min past 3 P.M. at request of Geo D Rowan

Chas E. Miles. Co Recorder.