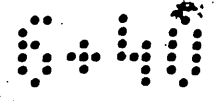


MR-6-40



TRACING OF A PART OF THE
MAP
OF THE SUBDIVISION OF THE
RANCHO
AZUSA OF DUARTE

LOS ANGELES COUNTY CALIFORNIA

Surveyed & subdivided at request of
Eugene Meyer Esqr
JULY 1872

By Frank Lecoeuvre
County Surveyor of Los Angeles County

Sec. 19

132 25 045

Lot 4
40 Acs

Lot 3
40 Acs

Lot 2
40 Acs

Lot 1
40 Acs

Lot 5
40 Acs

Lot 6
40 Acs

Lot 7
40 Acs

Lot 8
40 Acs

Sec 30

Lot 12
40 Acs

Lot 11
40 Acs

Lot 10
40 Acs

Lot 9
40 Acs

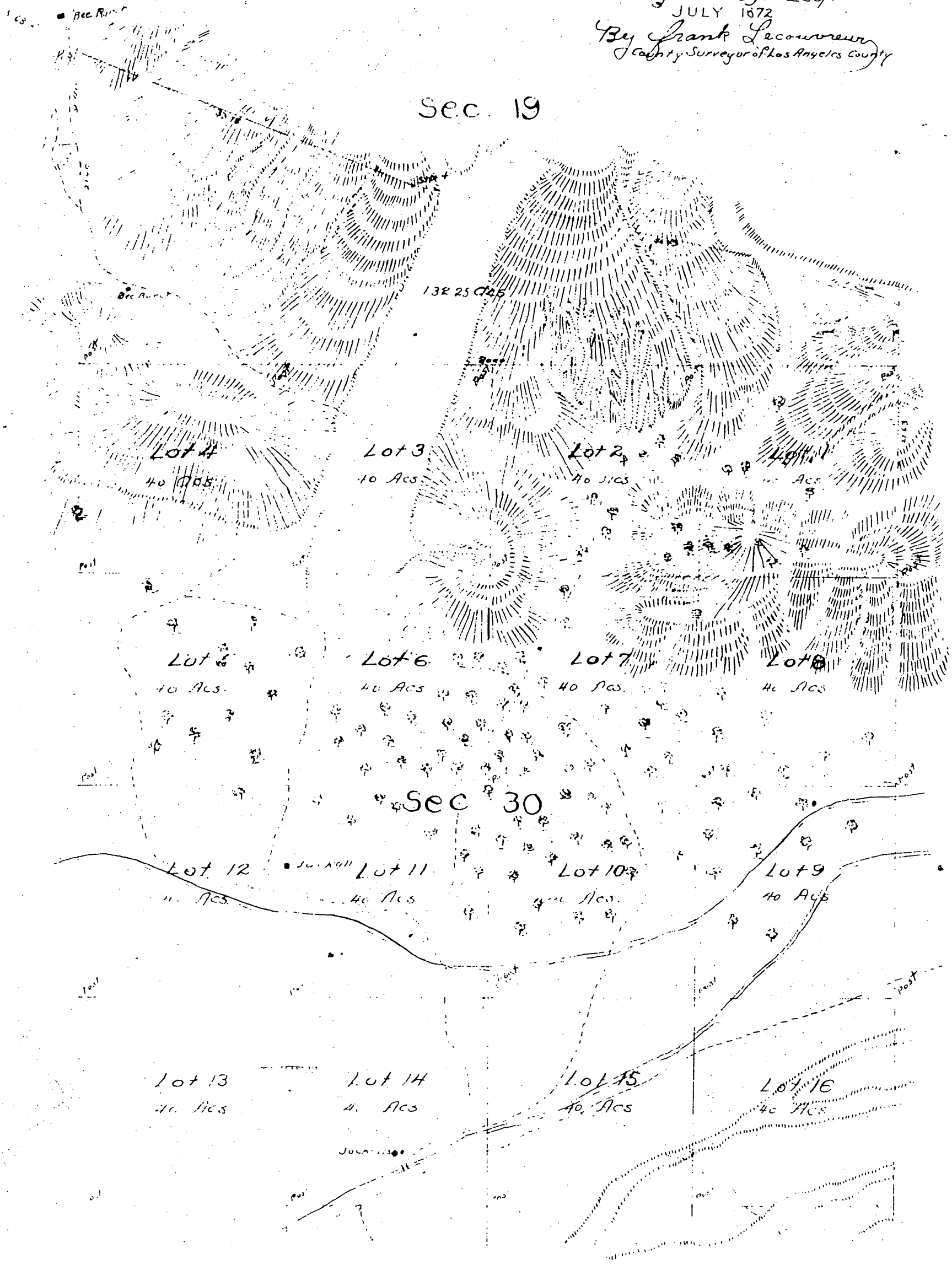
Lot 13
40 Acs

Lot 14
40 Acs

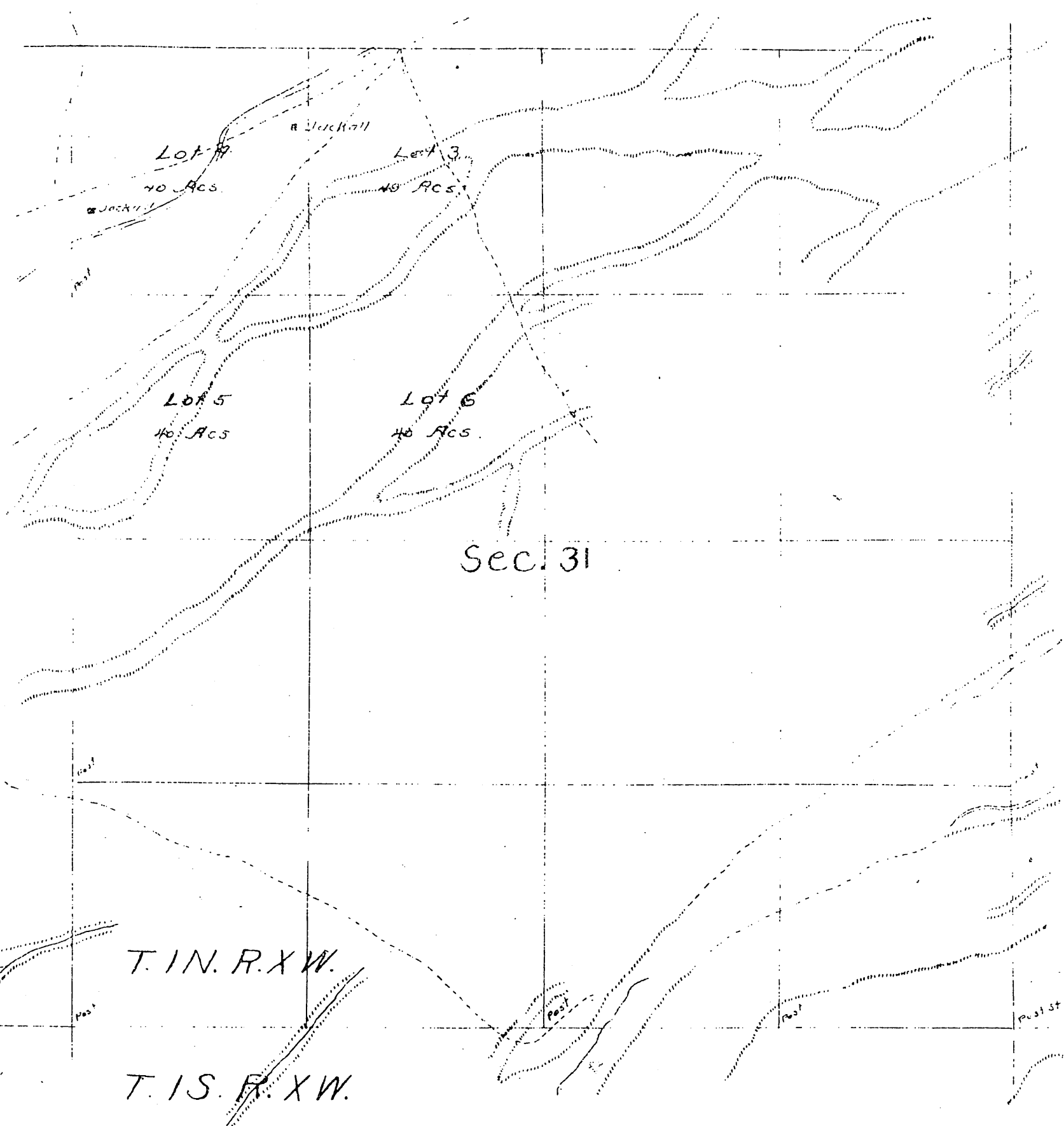
Lot 15
40 Acs

Lot 16
40 Acs

June 1872



MR-6-41



T. 1 N. R. 11 W.

T. 1 N. R. 11 W.

T. 1 S. R. 11 W.

T. 1 S. R. 11 W.

County Surveyers Office }
 Los Angeles County, California }

I hereby certify that I have carefully compared this tracing with the original maps of the subdivision of Rancho Alagon de Cuarte formerly in the possession of Eugene Meyer and now in the possession of E. S. Bradbury and I find said tracing to be a full true and correct copy of all of that portion of above mentioned map included within the exterior lines of sections 19, 20, & 31 T. 1 N. R. 11 W. S. 13 r.

John H. Hildy
 Deputy County Surveyor
 of Los Angeles County Cal

A full true and correct copy of the original recorded Sept 8th 1884 at 47 min past 3 P.M. at request of H. T. Lee.

Chas E Miles Co. Recorder

THO