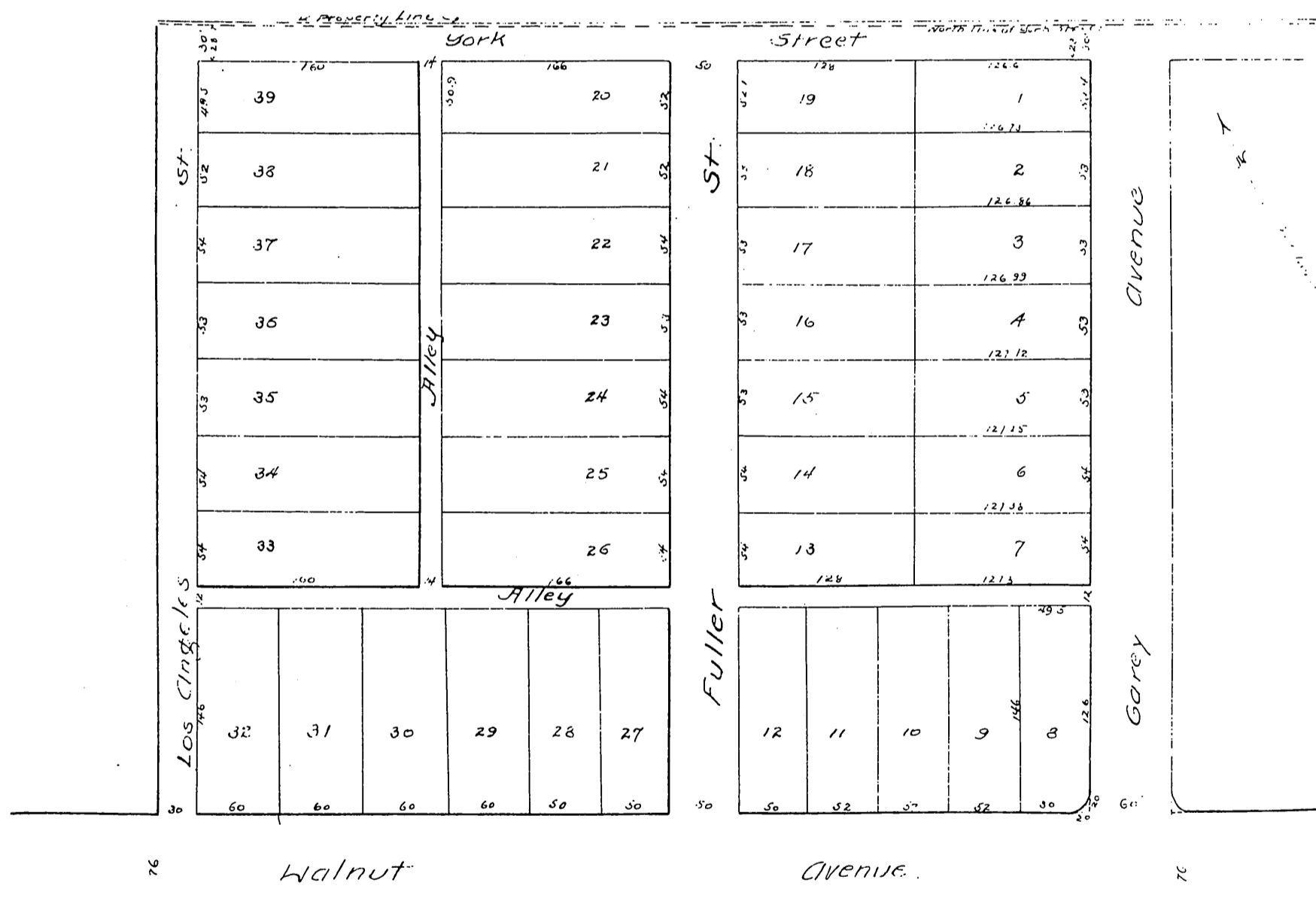


MR-6-77



**MAP**  
 OF  
**MILLAR'S SUBDIVISION**  
 OF A PORTION OF THE  
**GAREY PLACE TRACT**  
 LOS ANGELES, CAL.  
*H. J. Stevenson, Sur.*  
 1884.



Scale 100 ft per inch

A full, true and correct copy of the original recorded Oct. 11<sup>th</sup> 1884 at 3 min past 11.37 P.M. at request of E.B. Miller

Chas. E. Miles County Recorder