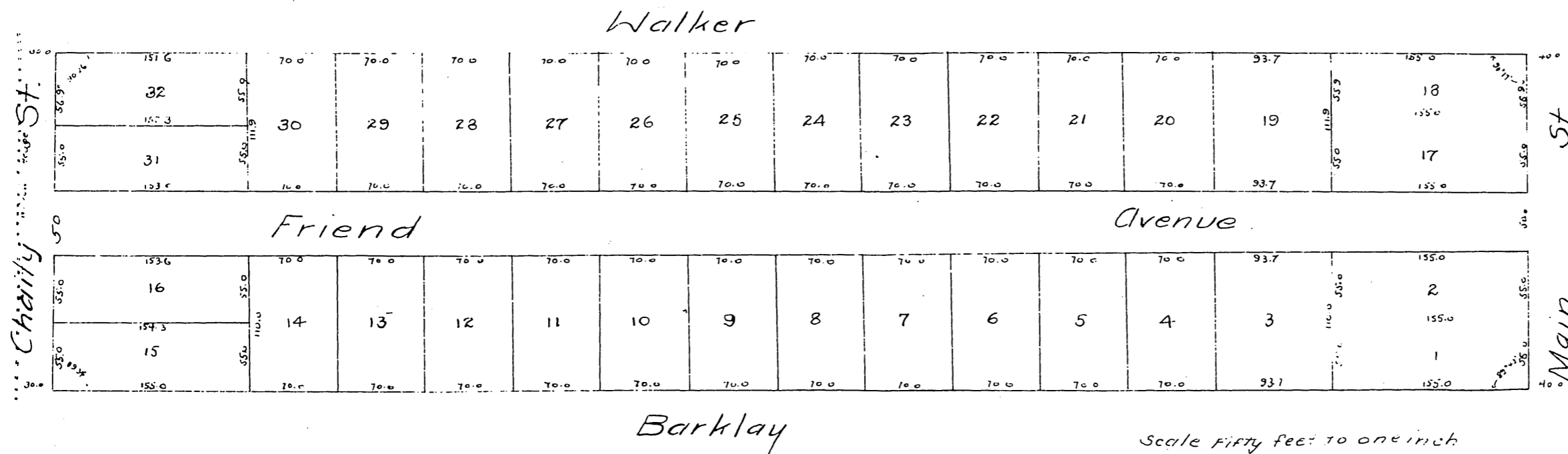


PLAT  
OF  
FRIENDS SUBDIVISION  
CITY OF LOS ANGELES

*Surveyed and subdivided at request of Wm Friend in Oct. 1884  
by Geo C Knox City Sur.*



*A full true and correct copy of the original reduced to scale of 100 feet per inch recorded Oct. 5, 1884 at 47 min past 4 P.M. at request of Wm Friend*

*Chas E Rules Co. Recorder  
By W. B. Puchard Deputy Recorder.*