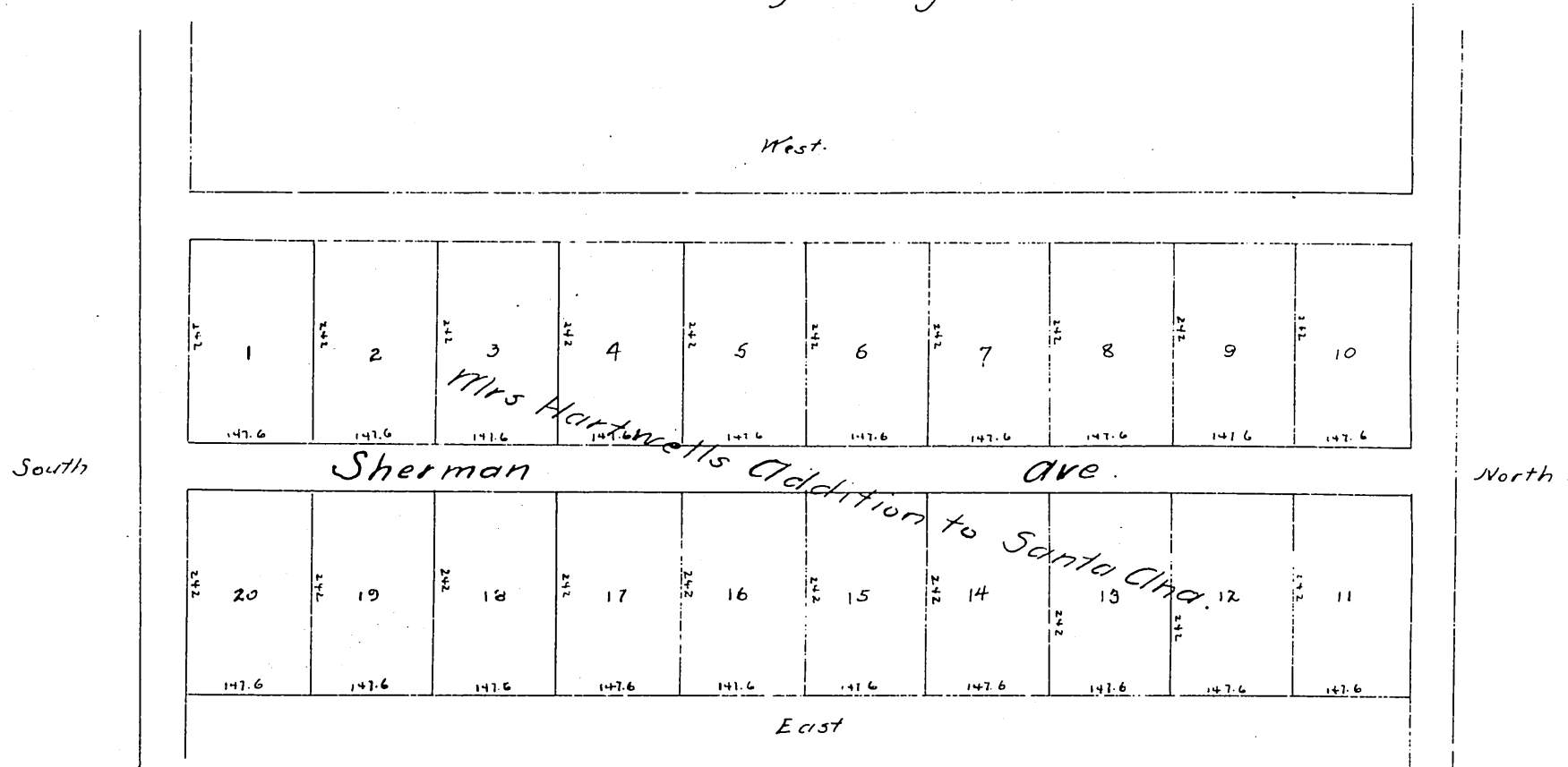


MR-6-93

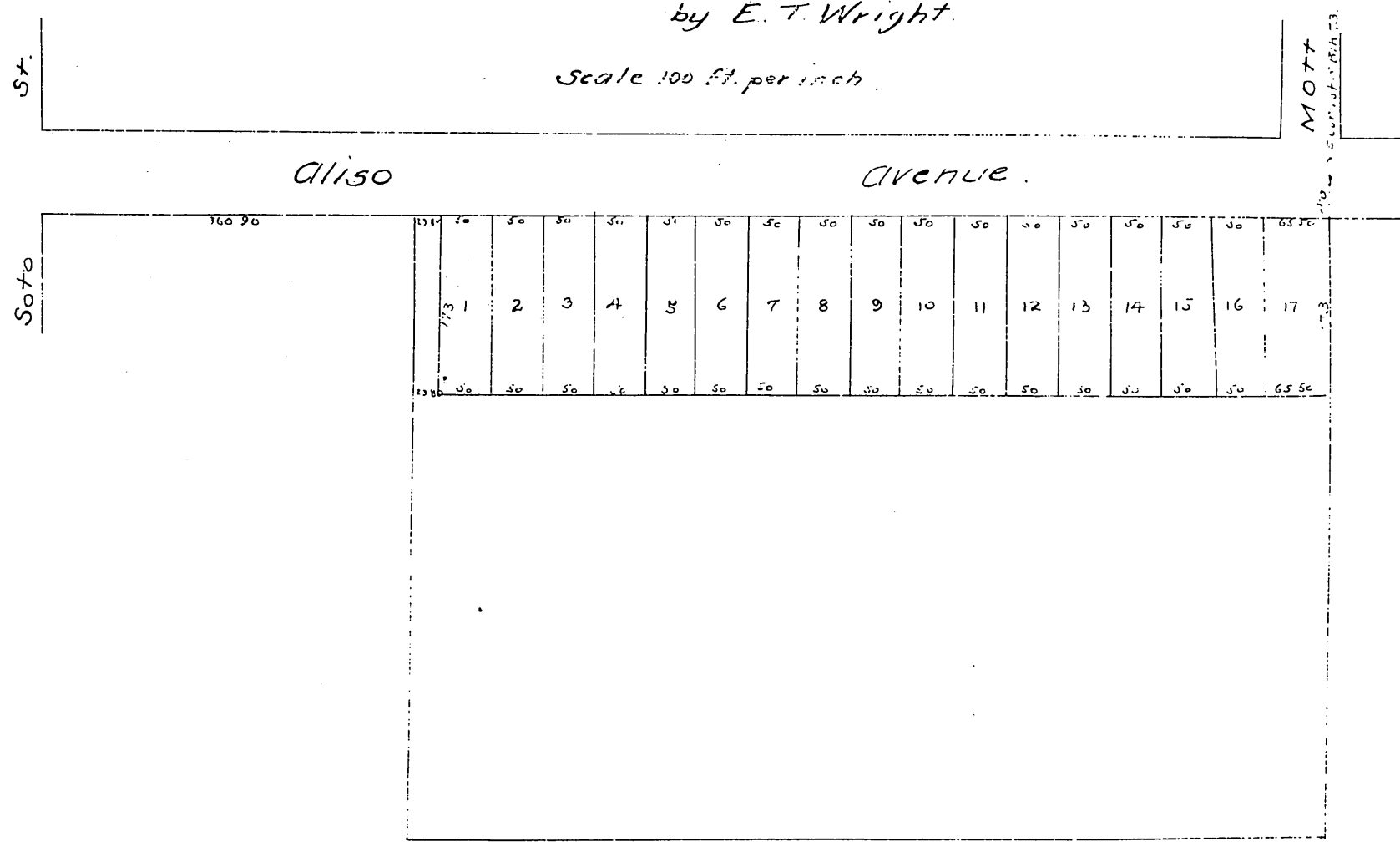
Plat  
 of Subdivision of Tract of  
 Mrs. Louisa M. Hartwell  
 purchased of  
 Samuel T. M. Neal  
 by deed dated December 21<sup>st</sup> 1882, recorded,  
 in Book 96 of Deeds on page 331 et seq Records  
 Los Angeles County



A full true and correct copy of the original  
 recorded Oct. 8<sup>th</sup> 1884 at 37 min past 4 P.M. at  
 request of N A Young  
 Chas E Miles Co Recorder.

Map  
 of  
 Kittredge's Subdivision  
 of a portion of  
 Lot 5 Block 73 Hancock's Survey

Surveyed Oct. 1884  
 by E. T. Wright.  
 Scale 100 ft. per inch.



A full true and correct copy of the original  
 reduced to the scale of 150 feet to the inch recorded  
 Oct 16<sup>th</sup> 1884 at 25 min past 1 P.M. at request of  
 W T. Kittredge.

Chas E Miles Co. Recorder.