

MR-6-106

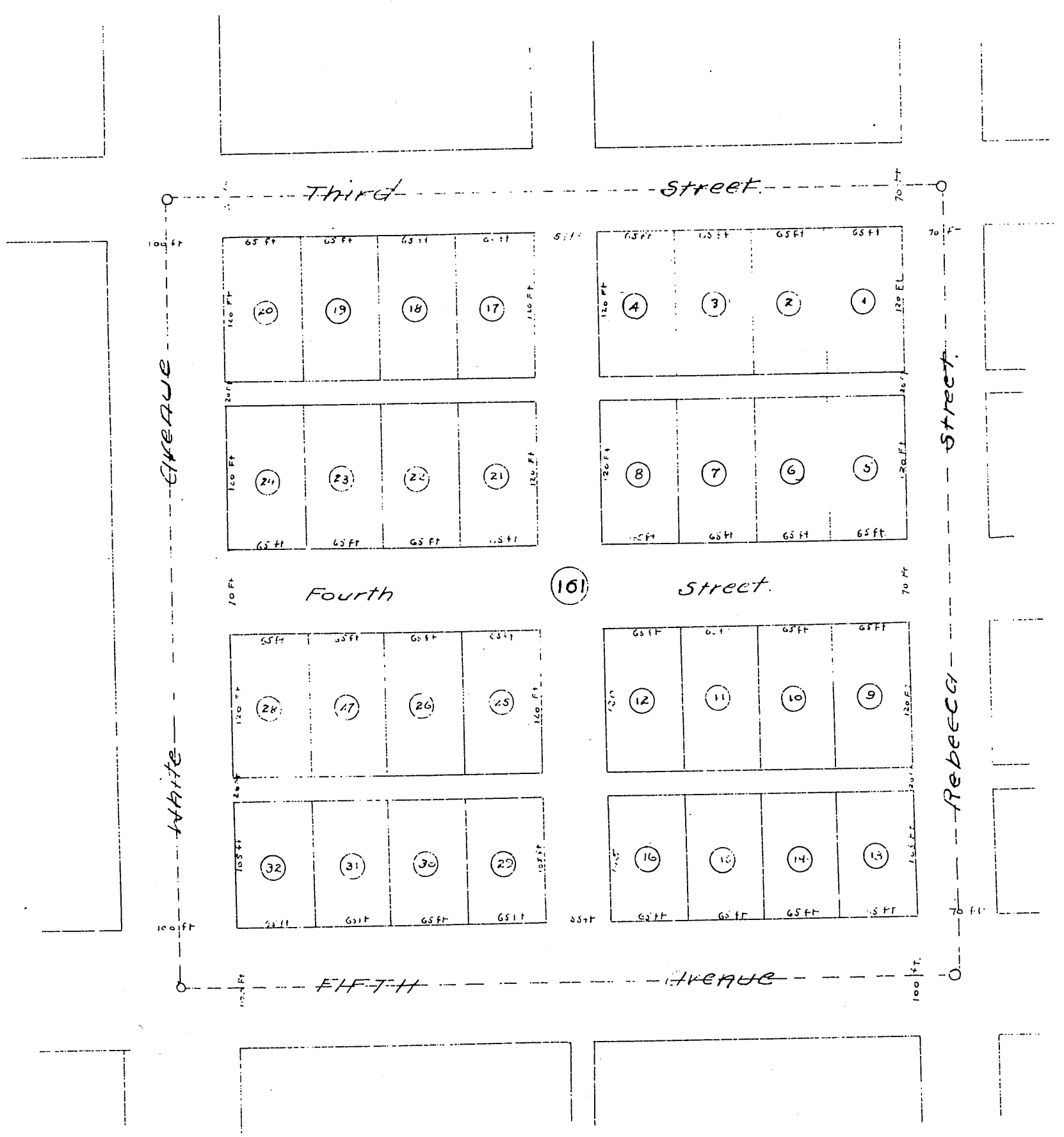
MAP OF S. J. ROLPH'S

SUBDIVISION OF BLOCK 161.

POMONA TRACT, POMONA CALIFORNIA

Drawn Oct 1884 by JAS. T. TAYLOR Civil Engineer

SCALE 66 FEET TO 1 INCH



A full true and correct copy of the original
 reduced to scale of 100 ft per inch recorded
 Oct. 20 1884 at 28 min past 2 P. M. at request of
 S. J. Rolph

Chas. E. Miles Co. Recorder